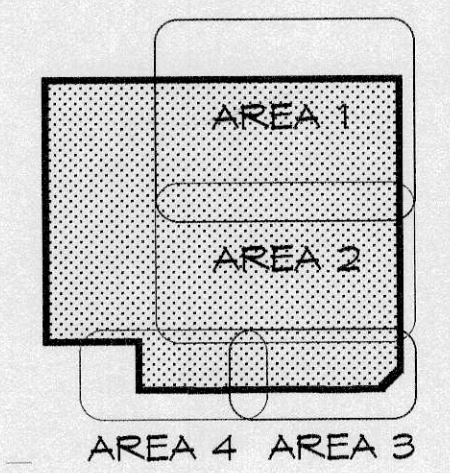


FOR ENLARGEMENT OF AREAS BELOW - SEE DWGS. A-8 THRU A-11



KEY PLAN
N.T.S.

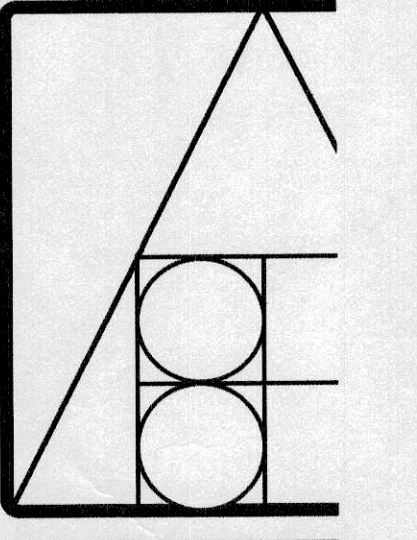
TOTAL OCC LOAD FROM ARENA
730
326
685
1200
2941 PERSONS WITH 50% W/OVER

ISSUE
PLOT: 2ND JUNE 1999
REV'D: 28TH AUGUST
REV'D: 11TH SEPT
REV'D: 13TH OCTOBER
REV'D: 2ND NOVEMBER
REV'D: 26TH MARCH

DRAWN: DUNCAL
DATE: FEB 1999
SCALE: 1/16" =

COPYRIGHT PROTECTED. THIS DRAWING IS THE PROPERTY OF BERND HERM ARCHITECT INC. AND MAY NOT BE REPRODUCED OR COPIED WITHOUT THE WRITTEN CONSENT.

STRUCTURAL CONSULTANT
BEARD ENGINEERING
#1 - 4646 RIVERSIDE
RED DEER, ALBERTA
T4N 6Y5
TEL (403) 343 61
FAX (403) 343 2



BERND HERM ARCHITECTS
INCORPORATED
40 - ALEXANDER
P.O. BOX 14
SALMON ARM, B.C.
TEL (250) 832 7
FAX (250) 832 7

PROJECT TITLE:
SHUSWAI TWIN ARENA
SALMON ARM, B.C.

DRAWING TITLE:
MAIN FLC PLAN

DRAWING NO:
A3
OF
0