

PLEASE HELP REDUCE WILDLIFE ATTRACTANTS AND CONFLICTS

- Put bins and bags out for collection by 7 AM on collection day, not the night before
- Store bins and bags in a location or manner that is inaccessible to wildlife
- Visit wildsafebc.com for more information about reducing wildlife attractants


City Bylaw 4281 - Curbside Collection

Recycle BC Depot locations for drop-off recycling

Zone A Monday	Zone B Tuesday	Zone C Wednesday	Zone D Thursday	Zone E Friday
-------------------------	--------------------------	----------------------------	---------------------------	-------------------------

Download our free Recycle Coach mobile app to get comprehensive local recycling & waste disposal information at your fingertips! (see Page 3 for details)

For more program information and other resources, please visit: www.salmonarm.ca/curbside (or scan QR code below)




Collection Guidelines (see pages 4 & 5 for the What-Goes-Where Guide)

- Food waste is collected weekly and garbage and recycling on alternate weeks (same day as food waste).
- Collection occurs between 7:00 AM and 5:00 PM every weekday except Christmas and New Year's Day.
- Have your containers at the curb by 7:00 AM on your collection day. Do not put them out the night before.
- Yard waste will be collected four (4) times in 2025 (see Page 3 for details).
- Collection schedule by zone is on the back page of this guide, or get the Recycle Coach app (see page 3).
- For missed collections or rejections, please contact SCV Waste Solutions directly (see bottom of page).

Food Waste: Weekly Collection

- Each household is permitted one (1) City-branded 57 L green bin containing up to 10 kg (22 lb) weekly.
- If you frequently have more than 10 kg of food waste, contact the City to purchase an additional weekly food waste collection (also suitable for rental suites).
- For occasional extra food waste, food waste bag tags can be purchased (see bottom of page).
- Each \$3 bag tag allows up to 10 kg of food waste. Please put extra food waste in paper or compostable plastic bags. There is no limit on the number of extra bags that can be put out.
- Bags used in kitchen catchers or green bins must be paper or certified compostable plastic. Regular plastic bags, such as grocery bags, are not permitted for food waste. Bags aren't mandatory but can prevent food waste from sticking or freezing in the bin. See page 6 for details.



Recycling: Bi-weekly Collection (alternating with Garbage)



IMPORTANT!
Curbside recycling is only for Packaging and Paper Products (PPP). Please adhere to the What-Goes-Where guide or Recycle Coach. For help, contact the City.

- Each household may put out unlimited bins every other week.
- Any type of bin may be used up to 120 L in size. Max. weight 10 kg (22 lb) when full.
- Do not put lids on the bins as it slows down collection and lids get lost or broken.
- Recycling is not accepted in plastic bags.
- Items can be co-mingled in bins - no special sorting is required.
- All items are to be placed loose in bins - do not nest items together.
- Do not pack bins too tightly or overfill as this makes them difficult to empty and results in damaged bins. Please put more bins out with less materials in them.
- Do not put Depot-Only materials in curbside recycling. See the What-Goes-Where Guide on pages 4 & 5 for more details.

Garbage: Bi-weekly Collection (alternating with Recycling)

- Each household is permitted a maximum of 10 kg (22 lb) of garbage every other week. Put garbage out for collection in a single standard-sized garbage bag or in a garbage can.
- All garbage must be bagged and tied securely, even if using a garbage can. Multiple small bags can be put in a garbage can up to the 10 kg limit.
- The City does not provide garbage cans, however they are recommended to help keep wildlife out of your garbage. Maximum size should be 120 L and made of a lightweight material.
- Garbage over the 10 kg limit requires garbage bag tags. Each \$3 tag allows up to 10 kg of garbage. There is no limit to the number of extra bags with tags that can be put out.



NOTE: The City provides one 57 L food waste (green) bin, one 8 L kitchen catcher and one 83 L recycling bin to new households.

City of Salmon Arm: 250.803.4000 | info@salmonarm.ca | www.salmonarm.ca/curbside
SCV Waste Solutions: 250.803.4074 | admin@scvwaste.ca (for missed or rejected collections)
CSRD: 250.832.8194 | inquiries@csrd.bc.ca | www.csr.bc.ca/168/Garbage-Recycling
Recycle BC: www.recyclebc.ca Recycling Council of British Columbia: www.rcbc.ca

Bag tag purchase locations:

- City Hall
- SASCU Recreation Centre
- Order online from the curbside collection web page

Curbside Yard Waste Collection 2025

Yard Waste Collection Weeks: April 28th, September 15th, October 13th, November 10th

Yard waste collection does not occur on the same days as regular weekly curbside collection. It typically takes 4 to 5 days for all yard waste to be collected. All collection zones are to have yard waste out at the curb by 7 AM on Monday of these weeks. Please contact SCV Waste Solutions if your bags have not been collected by end-of-day Thursday.

- All items, including branches, must be placed loose in Kraft paper yard waste bags.
- Do not use plastic or compostable plastic bags - only Kraft paper bags are accepted.
- Materials will be accepted in unlimited quantities, provided that each bag does not weigh more than 20 kg (44 lbs).
- Branches may be up to 1" (25 cm) in diameter and 3 ft (91 cm) long, unbundled in bags.
- Keep bags dry until collection week to prevent breakage.
- Minimize yard waste by mulching grass and leaves instead of bagging - mulch is good source of fertilizer for lawns.
- Yard waste (including Christmas trees) is also accepted at the Salmon Arm Landfill (yard waste composting area) year round, free-of-charge.
- This is an excellent opportunity to FireSmart your property. Visit firesmartbc.ca for more info.

! Starting in 2026 yard waste will be collected monthly from April to November (8 x per year)

Accepted materials include:
leaves, grass & hedge clippings, flowers, plants, shrubs,
sod, weeds (non-invasive), small branches (place loose in bags),
pumpkins (remove any Halloween decor)



Note: Yard waste is not accepted with food waste because yard waste disposal at the landfill is free-of-charge, whereas food waste is not. Small quantities, such as weeds, flowers, house plants, plant trimmings and flower bouquets can be put in your food waste.



Recycling made easy.

- You get:
- Address-specific collection schedule
 - Customizable collection reminders
 - City notifications & alerts
 - What-Goes-Where search tool
 - Report a missed collection or problem

Download our FREE app from your app store or call the City for more information!



CURBSIDE COLLECTION & RECYCLE BC DEPOT WHAT-GOES-WHERE GUIDE

CURBSIDE FOOD WASTE



fruit & vegetable scraps (remove produce stickers)

eggs, seafood, meat & bones

butter, fat, lard & oil

dairy products

pasta & bread

nuts, seeds & shells

wooden chopsticks, toothpicks & popsicle sticks

coffee grounds, tea bags & filter papers

condiments, jams & sauces

food-soiled paper products including: cardboard boxes, plates/bowls/cups, fast food wrap & bags, napkins, paper towels, facial tissues


Shredded paper is also accepted in small quantities. Contain in PAPER or COMPOSTABLE BAGS and place in green bin.



Put paper towels, napkins & tissues in your food waste. NOT in your recycling bin.

NO Pet Waste
NO Yard Waste

CURBSIDE RECYCLING



spiral wound cans

all types of plastic containers & lids

paper packaging for wet items

metal & foil containers, foil wrap

paper packaging for dry items

corrugated cardboard (flattened and stacked - 30"x30" max, do not tie)

plastic food storage containers (ex. Glad, Ziploc)

disposable plastic plates/bowls/cups

plastic plant pots & trays

newspaper, printer paper, magazines, catalogues, flyers, non-foil paper gift wrap/gift bags, cardboard gift boxes, paper & cardboard party décor (remove any non-paper parts)

Contain shredded paper in a PAPER BAG or CARDBOARD BOX and place in or beside your recycling bins

Make sure items are EMPTIED & RINSED

ONLY items in the above categories are accepted.

NO household goods
NO personal items
NO Depot-Only items

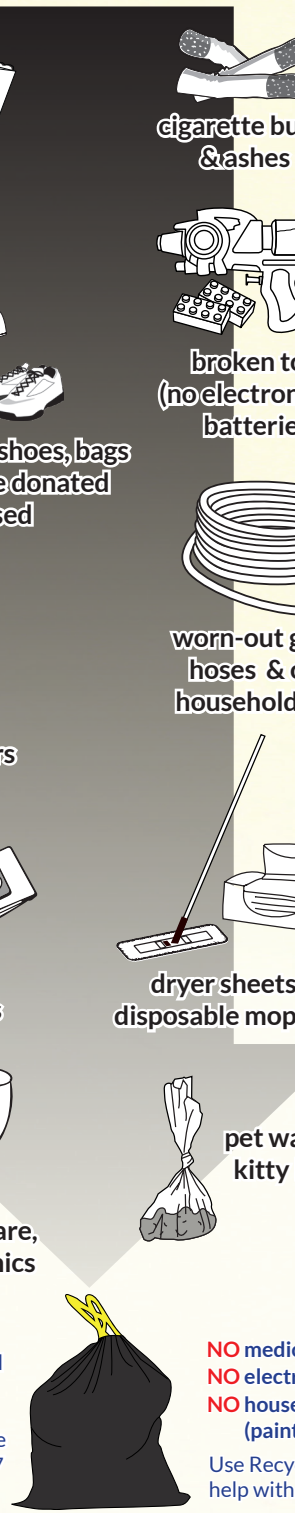


Make sure items are EMPTIED & RINSED

ONLY items in the above categories are accepted.

NO household goods
NO personal items
NO Depot-Only items

CURBSIDE GARBAGE



diapers

cigarette butts & ashes

worn-out clothing, shoes, bags etc. that cannot be donated or repurposed

broken toys (no electronics or batteries)

worn-out garden hoses & other household items

furnace filters

vacuum bags

dryer sheets & disposable mop pads

broken glassware, dishes & ceramics

pet waste & kitty litter

NO medical sharps

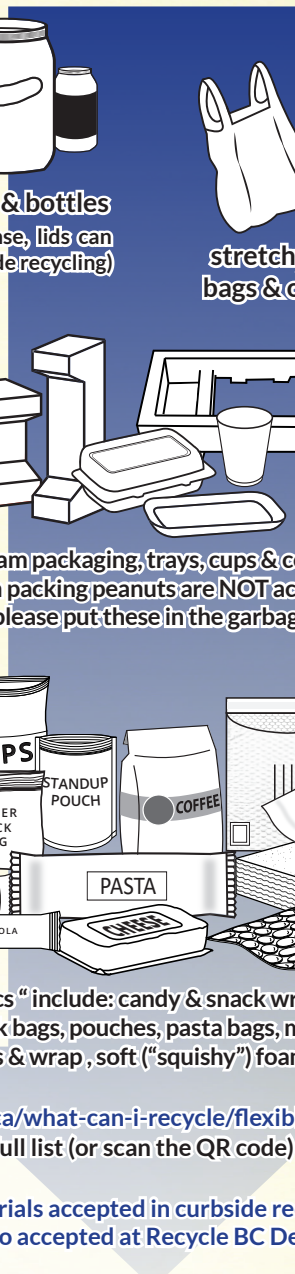
NO electrical/electronics/batteries

NO household hazardous waste (paint, chemicals, oil, fuels etc.)

Use Recycle Coach or contact the City for help with proper disposal of these items.

Consider donating items in good condition to a thrift store, sell online, or take them to a CSRD Reuse Centre (there is one at the Salmon Arm Landfill). See page 7 for more information.

DEPOT-ONLY



glass jars & bottles (empty & rinse, lids can go in curbside recycling)

stretchy plastic bags & overwrap


Styrofoam packaging, trays, cups & containers (foam packing peanuts are NOT accepted please put these in the garbage)

Plastic bubble envelopes with paper exterior are NOT accepted - put in garbage

"Flexible plastics" include: candy & snack wrappers, chip bags, coffee bags, ziplock bags, pouches, pasta bags, mesh bags, cling wrap, bubble envelopes & wrap, soft ("squishy") foam packaging & wrap

Visit recyclebc.ca/what-can-i-recycle/flexible-plastics for a full list (or scan the QR code)

All materials accepted in curbside recycling are also accepted at Recycle BC Depots




Bill's Bottle Depot accepts:

- Refundable beverage containers
- Electronics
- Small electrical appliances
- Smoke & CO alarms
- Light bulbs, fixtures & strings

When In Doubt...

Recycle Coach has what-goes-where info for almost everything. Get the mobile app or use it directly on our curbside collection web page. Contact the City for further assistance. See page 2 for contact and website info.

Contact the Columbia Shuswap Regional District (CSRD) for more information about Household Hazardous Waste (HHW) Depots, Reuse Centres and other refuse disposal options. See page 2 for CSRD contact info.

Follow this guide or use Recycle Coach to avoid putting unaccepted items in your recycling, food waste and garbage. Page 7 provides many other recycling options. Check these options before throwing items in the garbage.

Tips for Working with Food Waste

1. Reduce maintenance and prevent food waste from sticking or freezing in your green bin by lining your kitchen catcher with paper bags, newspaper or certified compostable plastic bags. Food waste can also be put into cardboard boxes, such as cereal or cracker boxes. **DO NOT** use regular plastic bags.

2. Drain as much liquid as possible from your food waste before putting it in your kitchen catcher or green bin. Wrap in paper towel or newspaper if necessary.

3. Sprinkle some baking soda, white vinegar or lemon juice in your container to help fight odours.

4. Freeze small bags of food waste (if you have space in your freezer) until your collection day. This can be particularly helpful in the summer to prevent odours, maggots and avoid attracting wildlife to your green bin.

5. Keep your containers cool by storing them away from heat and direct sunlight. Heat speeds up decomposition and produces odour faster.

6. Fats, oils and greases (“FOG”) must not be dumped down the drain. Let these solidify or freeze, then scrape into your food waste. Large quantities of cooking oil can be added in small quantities over several weeks or contact the City for other disposal options.

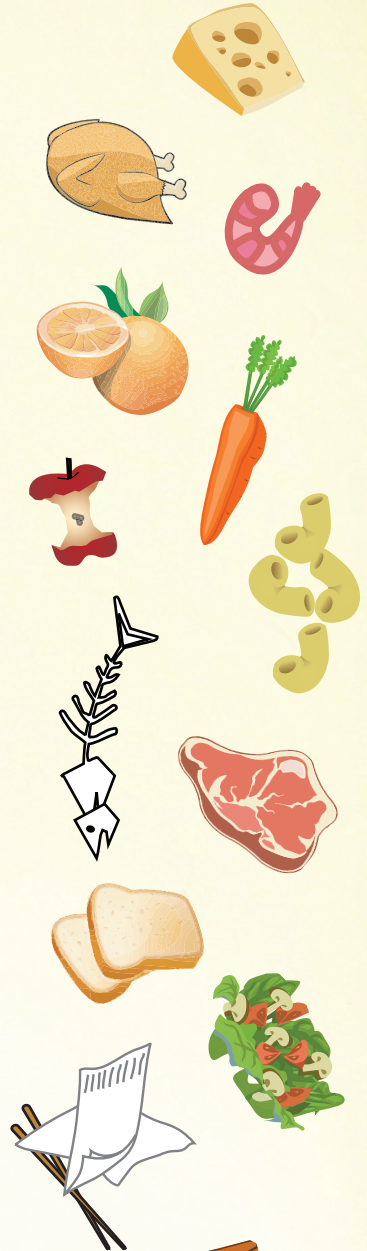
7. Soiled paper products like paper towel, napkins and tissues must go in your food waste, **NOT** recycling. If used with chemicals, put them in the garbage.

8. Small wooden items like popsicle sticks, toothpicks and chopsticks are also accepted in with your food waste. Break longer items into smaller pieces.

9. Take your green bin to the curb for collection every week, even if it isn't full.

10. Do not put your kitchen catcher at the curb as these are difficult for collection staff to empty and can get damaged or lost, or the lids fall off in to the truck. Only the green bin is accepted at the curb, regardless of how much food waste you have.

11. Look for these common compostable plastic certification logos for bags or for other compostable plastics that are permitted in food waste. Compostable plastic food waste bags are sold at grocery stores and home supply stores, typically in the same aisle as garbage bags.



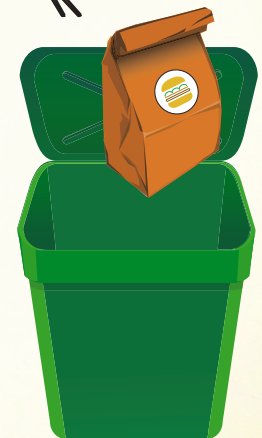
Keep these OUT of your Food Waste

- X Yard Waste**
- X Pet Waste & Kitty Litter**
- X Diapers**
- X Biodegradable / oxo-degradable plastic***
- X Plastic**
- X Glass**
- X Styrofoam**
- X Metal**



*** IMPORTANT:** Biodegradable, oxo-degradable and compostable are not the same thing. Only put certified compostable plastic items in your food waste (they should have one of the above certification logos). If you are unsure, then it is best to put it the item in the garbage. Do not put compostable plastics in your recycling as they cannot be recycled with other types of plastic resins.

Some cardboard take-out containers may have a thin plastic lining that isn't compostable (similar to paper coffee cups). In this case, rinse the container and put it in your recycling.



QUESTIONS?
Contact the City at 250.803.4000
info@salmonarm.ca

But Wait...There is Much More That Can Be Recycled!

Below are the Extended Producer Responsibility (EPR) programs that exist in BC for recycling many types of products. Check the websites for more info, or visit bcrecycles.ca for a one-stop shop for all EPR programs. EPR is a system where producers are responsible to pay for the collection and recycling of the products and packaging they make and sell. For example, the Recycle BC EPR program funds the recycling of residential packaging and paper products (PPP) on behalf of producers.

Note that **textiles** are currently not covered by an EPR program but can be dropped-off at **Diabetes Canada** donation boxes around town. Check-out declutter.diabetes.ca for locations and what can be donated. They also offer a pick-up service. There is also a **Big Brothers & Sisters** donation bin at the entrance to the Salmon Arm Landfill, across from the Recycle BC Depot.

<p>Interchange Recycling</p> <p>Used Oil, Filters & Antifreeze interchangerecycling.com</p>	<p>productcare RECYCLING</p> <p>Household Hazardous Waste Paint Light Bulbs & Fixtures Smoke/CO Alarms</p> <p>productcare.org/province/british-columbia</p>	<p>ElectroRecycle</p> <p>Electrical Product Recycling electrorecycle.ca</p>
<p>Return-It Electronics</p> <p>Electronics return-it.ca/electronics</p>	<p>epra</p> <p>Single-Use & Rechargeable Batteries call2recycle.ca</p>	<p>MARR</p> <p>Large Appliances marrbc.ca</p>
<p>HEALTH PRODUCTS STEWARDSHIP ASSOCIATION</p> <p>Medications & Sharps healthsteward.ca</p>	<p>OPEIC</p> <p>OUTDOOR POWER EQUIPMENT INSTITUTE OF CANADA</p> <p>opeic.ca</p>	<p>Return-It Electronics</p> <p>Contact the City for assistance with recycling these items</p> <p>Electric Mobility Products & Batteries return-it.ca/electronics</p>
<p>Return-It</p> <p>It's Worth It.</p> <p>Refundable Beverage & Alcohol Containers return-it.ca</p>	<p>TRP</p> <p>EASY. SAFE. FREE. THERMOSTAT RECYCLING</p> <p>Digital & Mercury Thermostats hrai.ca/trp</p>	<p>TIRE Stewardship BC</p> <p>Vehicle & Bicycle Tires tsbc.ca</p>
<p>RECYCLEBC</p> <p>Packaging & Printed Paper recyclebc.ca</p>		

Don't see what you need to recycle?

The Recycling Council of BC maintains a comprehensive database for recycling or properly disposing of almost any item.

Check out the "What are you recycling?" search tool on their website at rcbc.ca or contact them at: 1.800.667.4321 info@rcbc.ca



Got too much waste?

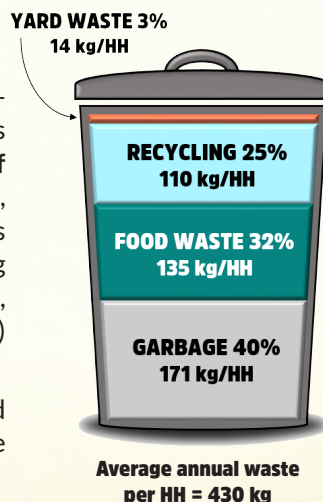
We'd be happy to provide assistance on how to reduce!

Contact the City at: 250.803.4000 info@salmonarm.ca

What's In Your Bin?

Over the last 4 years, the average household receiving curbside collection in Salmon Arm has generated the quantities of waste shown on the left. Thanks to your efforts, 60% of this waste is being diverted from the landfill (recycling, food waste and yard waste combined)! The diversion rate is likely higher than 60% as many household items are being recycled directly at Recycle BC Depots, Bill's Bottle Depot, the CSRD Resource Recovery Centre (Salmon Arm Landfill) and through the other EPR programs above.

At 40%, garbage still forms a large percentage of household waste, but with continued efforts to reduce and divert more of your waste, this will hopefully become smaller over time!



Curbside Collection Statistics 2023*

Households (HH)	6,859
Total Waste Collected	2,813 tonnes / 410 kg per HH
Waste Diverted From Landfill	1,672 tonnes / 244 kg per HH
Diversion Rate	60%

* Most recent data available at time of publication. For more comprehensive data, refer to the Curbside Collection Statistics on our curbside collection web page.

2025 COLLECTION CALENDAR

Garbage & Food Waste Weeks

Recycling & Food Waste Weeks

Yard Waste Collection Weeks

Holiday - No Collection

Alternate Collection Date

April 28th, Sept 15th, Oct 13th, Nov 10th
See Page 3 for details

January (+ last wk Dec 2024)

Su	M	T	W	Th	F	Sa
22	23	24	25	26	27	28
29	30	31	1	2	3	4
5	6	7	8	9	10	11
12	13	14	15	16	17	18
19	20	21	22	23	24	25
26	27	28	29	30	31	1

February

Su	M	T	W	Th	F	Sa
26	27	28	29	30	31	1
2	3	4	5	6	7	8
9	10	11	12	13	14	15
16	17	18	19	20	21	22
23	24	25	26	27	28	1

March

Su	M	T	W	Th	F	Sa
2	3	4	5	6	7	8
9	10	11	12	13	14	15
16	17	18	19	20	21	22
23	24	25	26	27	28	29
30	31	1	2	3	4	5

April

Su	M	T	W	Th	F	Sa
30	31	1	2	3	4	5
6	7	8	9	10	11	12
13	14	15	16	17	18	19
20	21	22	23	24	25	26
27	28	29	30	1	2	3

May

Su	M	T	W	Th	F	Sa
27	28	29	30	1	2	3
4	5	6	7	8	9	10
11	12	13	14	15	16	17
18	19	20	21	22	23	24
25	26	27	28	29	30	31

June

Su	M	T	W	Th	F	Sa
1	2	3	4	5	6	7
8	9	10	11	12	13	14
15	16	17	18	19	20	21
22	23	24	25	26	27	28
29	30	1	2	3	4	5

July

Su	M	T	W	Th	F	Sa
29	30	1	2	3	4	5
6	7	8	9	10	11	12
13	14	15	16	17	18	19
20	21	22	23	24	25	26
27	28	29	30	31	1	2

August

Su	M	T	W	Th	F	Sa
27	28	29	30	31	1	2
3	4	5	6	7	8	9
10	11	12	13	14	15	16
17	18	19	20	21	22	23
24	25	26	27	28	29	30

September

Su	M	T	W	Th	F	Sa
31	1	2	3	4	5	6
7	8	9	10	11	12	13
14	15	16	17	18	19	20
21	22	23	24	25	26	27
28	29	30	1	2	3	4

October

Su	M	T	W	Th	F	Sa
28	29	30	1	2	3	4
5	6	7	8	9	10	11
12	13	14	15	16	17	18
19	20	21	22	23	24	25
26	27	28	29	30	31	1

November

Su	M	T	W	Th	F	Sa
2	3	4	5	6	7	8
9	10	11	12	13	14	15
16	17	18	19	20	21	22
23	24	25	26	27	28	29
30	1	2	3	4	5	6

December (+ 1st week Jan 2026)

Su	M	T	W	Th	F	Sa
30	1	2	3	4	5	6
7	8	9	10	11	12	13
14	15	16	17	18	19	20
21	22	23	24	25	26	27
28	29	30	31	1	2	3

Holiday Schedules (Christmas Day & New Year's Day)

ZONE C (Wednesday) - dates for Dec 2024/Jan 2025

Garbage & Food Waste Collection will be **Sat Dec 28, 2024** in lieu of **Wed Dec 25, 2024**

Recycling & Food Waste Collection will be **Sat Jan 4, 2025** in lieu of **Wed Jan 1, 2025**

ZONE D (Thursday) - dates for Dec 2025/Jan 2026

Garbage & Food Waste Collection will be **Sat Dec 27, 2025** in lieu of **Thurs Dec 25, 2025**

Recycling & Food Waste Collection will be **Sat Jan 3, 2026** in lieu of **Thurs Jan 1, 2026**



Zone A Monday	Zone B Tuesday	Zone C Wednesday	Zone D Thursday	Zone E Friday
------------------	-------------------	---------------------	--------------------	------------------

Get the **Recycle Coach** mobile app for your address-specific collection schedule, collection reminders, alerts and special collection event notifications

