

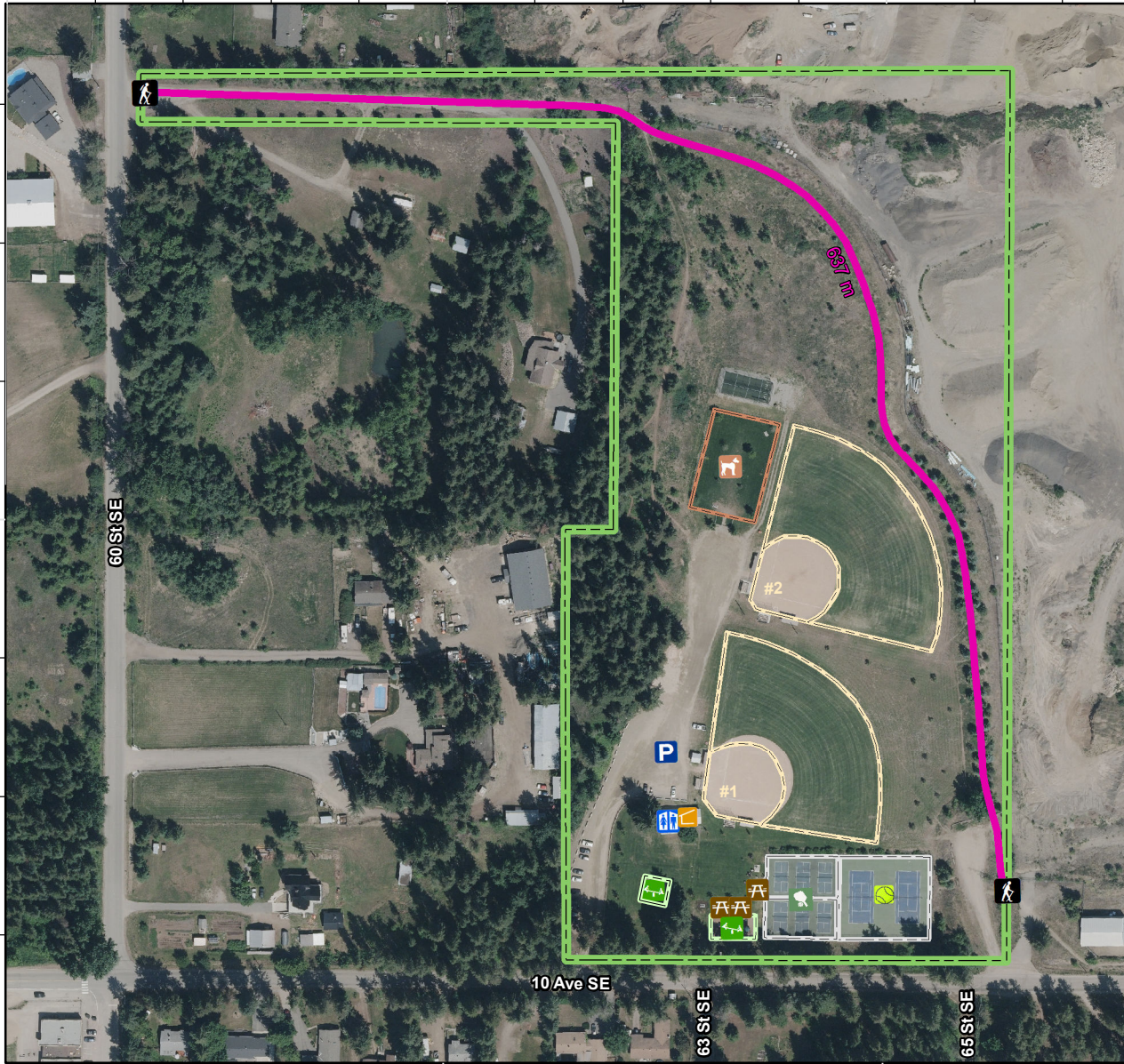
119°13'0"W

119°12'50"W

119°12'40"W

50°41'40"N

50°41'40"N



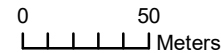
119°12'50"W

119°12'40"W

CITY OF SALMON ARM

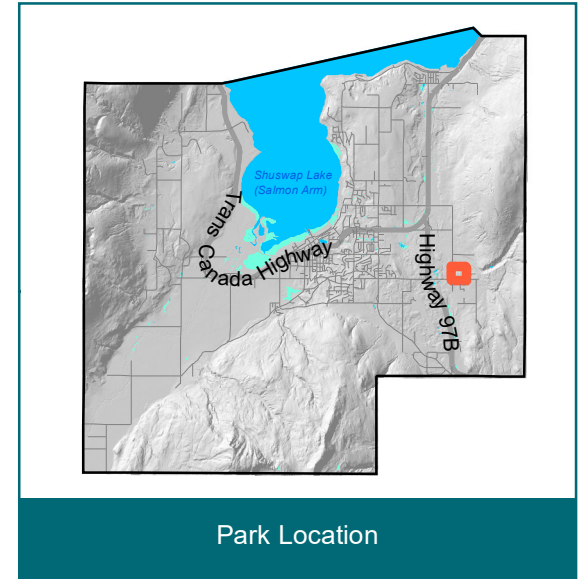


- Trailhead
- Covered Shelter
- Tennis Court
- Trail
- Parking
- Playground
- Pickleball Court
- Washroom
- Fenced Dog Park
- Klahani Park
- Picnic Table
- Baseball Field



Klahani Park

6391 10 Ave SE



Park Location

The field map contains information that has been compiled by the City of Salmon Arm using data that is believed to be accurate. However, caution should be exercised as deficiencies, errors or omissions may be present. The City of Salmon Arm distributes this material without warranties of any kind, expressed or implied, including but not limited to warranties of suitability of particular purpose or use.