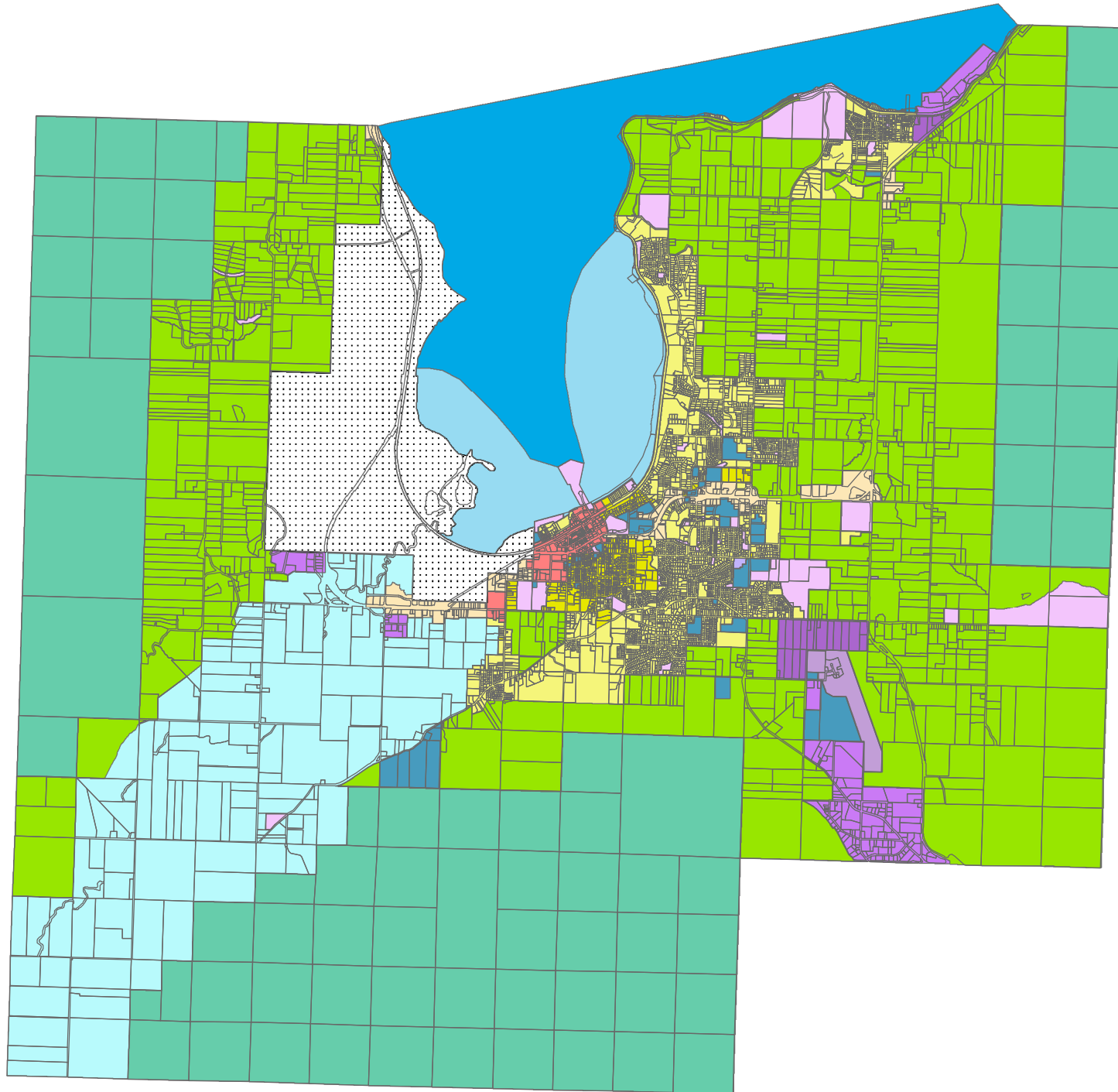
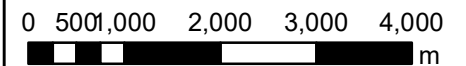


**OCP2024:  
DRAFT  
Land Use Map  
MAP A-1**



- ACREAGE-RESERVE
- SALMON VALLEY AGRICULTURE
- FOREST RESERVE
- COMMERCIAL CITY CENTRE
- COMMERCIAL HIGHWAY SERVICE/TOURIST
- COMMERCIAL NEIGHBOURHOOD
- INDUSTRIAL-AIRSIDE
- INDUSTRIAL-GENERAL
- INDUSTRIAL-LIGHT
- INSTITUTIONAL
- LAKE RECREATION
- PARK
- ENVIROMENTALLY-SENSITIVE LAKE AREAS
- RESIDENTIAL HIGH DENSITY
- RESIDENTIAL LOW DENSITY
- RESIDENTIAL MEDIUM DENSITY
- IR/FIRST NATIONS

**DRAFT MAP ONLY -  
SUBJECT TO FURTHER  
AND MORE DETAILED  
REVIEW**

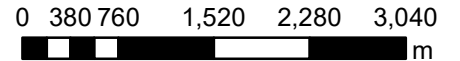


**OCP2024:  
DRAFT Urban Containment  
Boundary &  
Growth Management Areas**

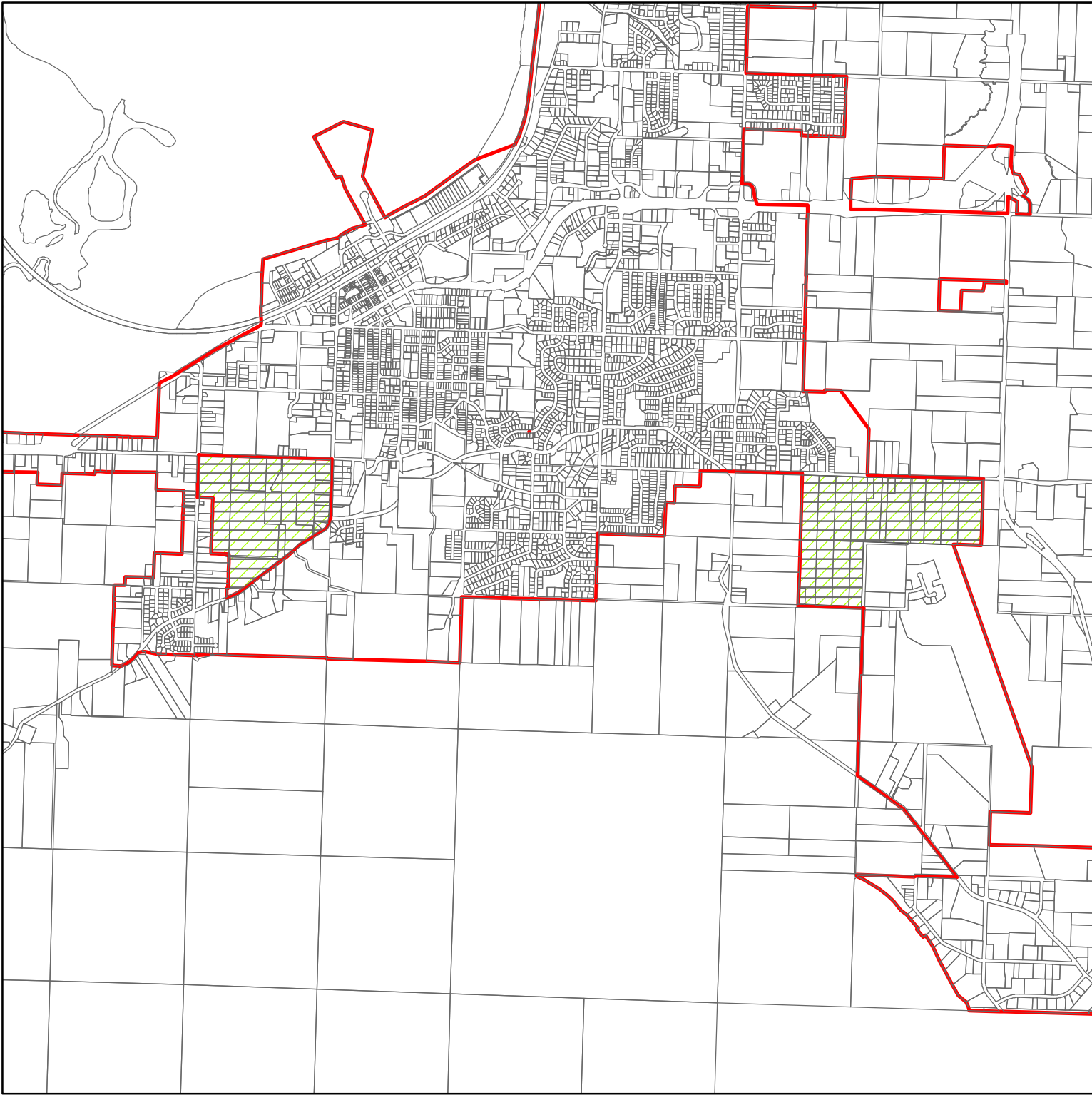
**MAP 4.1**



-  DRAFT UCB
-  A
-  B
-  C
-  E

**DRAFT MAP ONLY -  
SUBJECT TO FURTHER  
AND MORE DETAILED  
REVIEW**

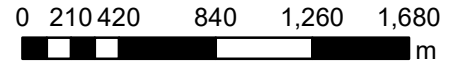


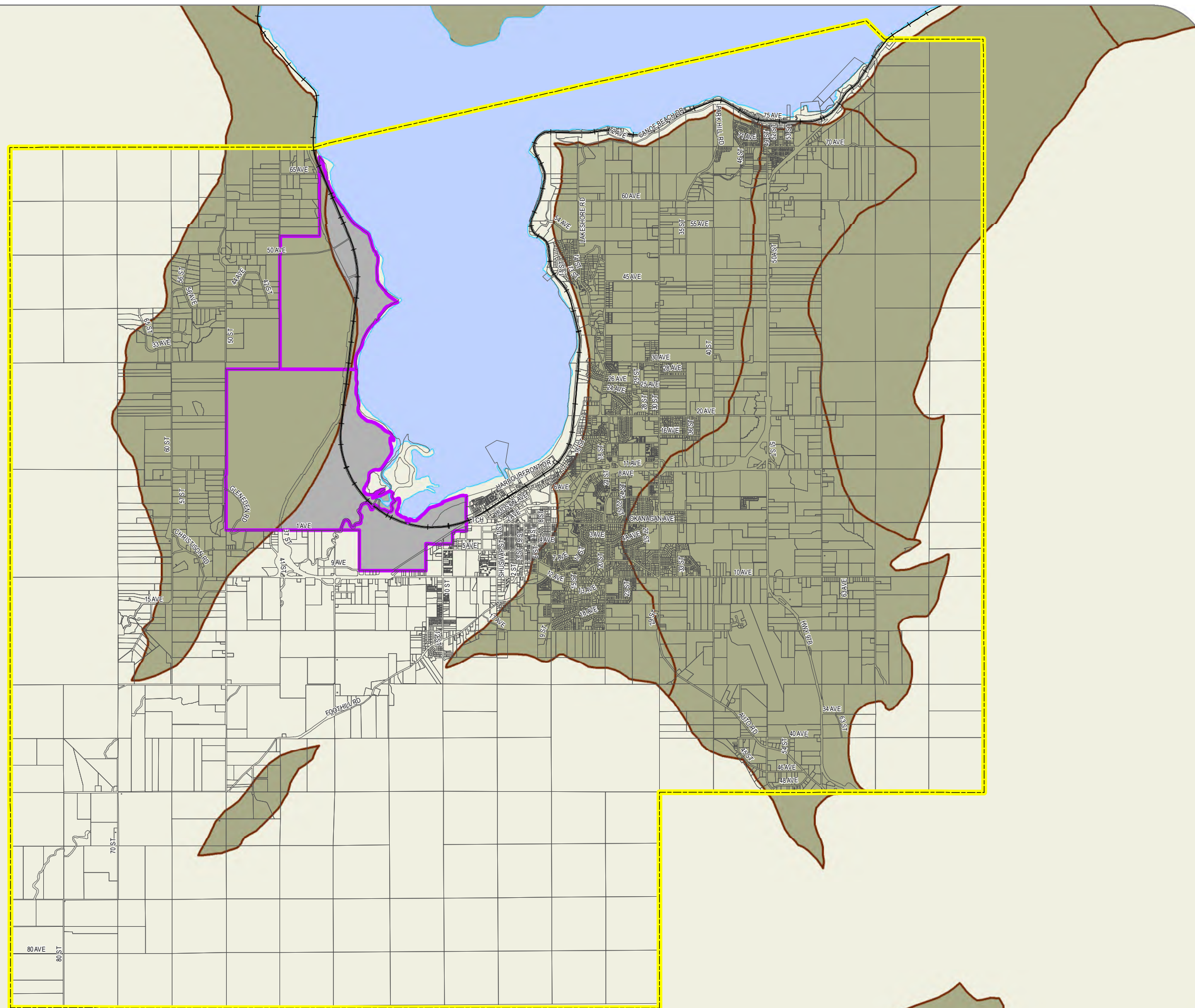
**OCP2024:  
DRAFT Urban Containment  
Boundary &  
ALR Exclusion Sites  
MAP 4.2**



-  DRAFT UCB
-  ALR Exclusion Application

**DRAFT MAP ONLY -  
SUBJECT TO FURTHER  
AND MORE DETAILED  
REVIEW**



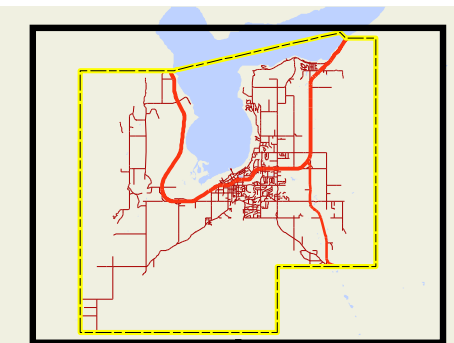


Legend

- High Aggregate Potential (MEMPR)
- City Boundary
- First Nations Lands
- Parcels

**DRAFT MAP ONLY -  
SUBJECT TO FURTHER  
AND MORE DETAILED  
REVIEW**

Key Map








Kilometers  
0 0.25 0.5 1

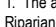

**DRAFT**  
**Environmentally Sensitive**  
**Riparian Areas**  
**Map**

**MAP 9.1**

**Legend**

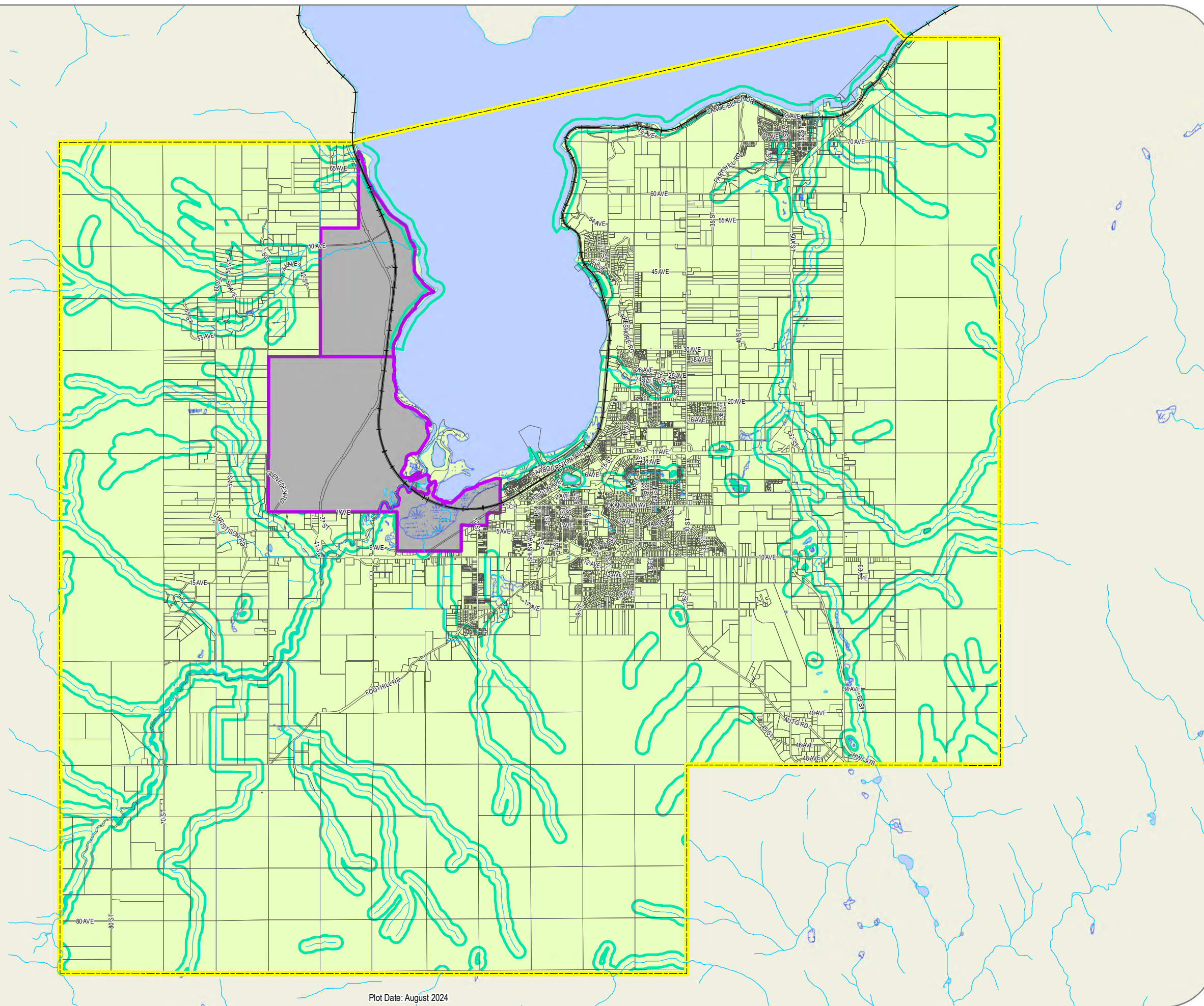
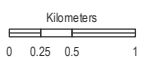
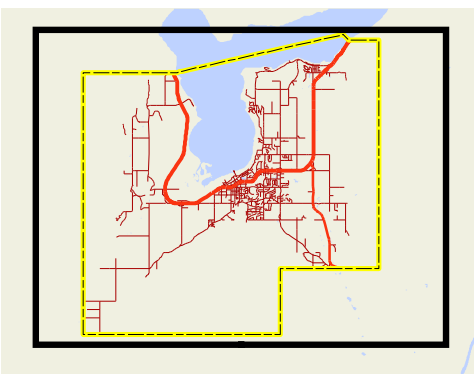
-  Environmentally Sensitive Riparian Areas
-  City Boundary
-  First Nations Lands
-  Parcels
-  Streams

**Note:**

1. The approximate locations of Environmentally Sensitive Riparian Areas are shown as  but this inventory is incomplete and additional mapping is required, including site survey and/or assessment by a QEP as per Riparian Areas Regulation.
2. Width of Environmentally Sensitive Riparian Areas  are not to scale. Refer to Policy 5.4
3. All Designations are conceptual only, subject to site survey.













**DRAFT MAP ONLY -  
 SUBJECT TO FURTHER  
 AND MORE DETAILED  
 REVIEW**

**Key Map**



**DRAFT**  
**Environmental Resources**  
**Map**  
**MAP 9.2**

**Legend**

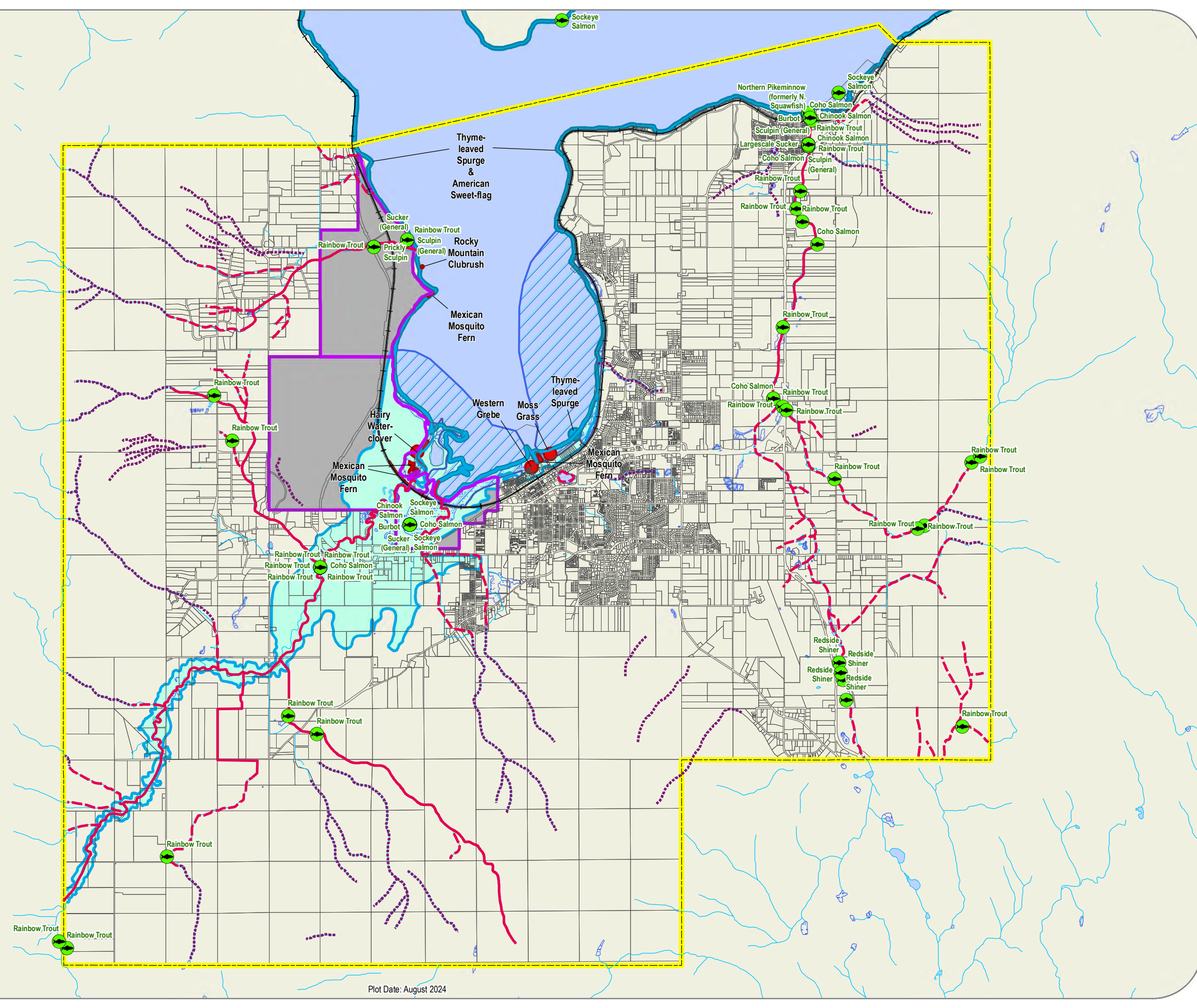
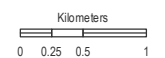
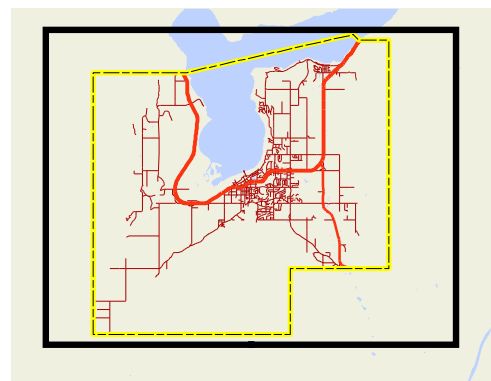
-  Known Fish Observations (MoE)
-  Suspected Non-Fish Bearing Stream
-  Suspected Fish Bearing Stream
-  Documented Fish Bearing Stream
-  Red Listed Species & Ecosystems (CDC, MoE)
-  Blue Listed Species & Ecosystems (CDC, MoE)
-  Environmentally Sensitive Lake Areas
-  1:200 Year Floodplain
-  City Boundary
-  First Nations Lands
-  Parcels
-  Streams

**Note:**

CSRD Shoreline / Foreshore data is not displayed due to difficulties showing detailed information at this map scale.

**DRAFT MAP ONLY -  
 SUBJECT TO FURTHER  
 AND MORE DETAILED  
 REVIEW**













**Key Map**



**DRAFT**  
**Existing and Proposed**  
**Greenways**  
**Map**

**MAP 10.1**

**Legend**

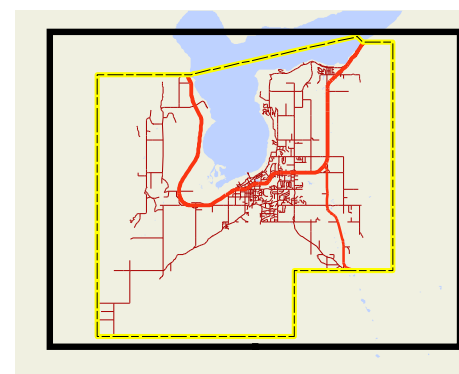
-  Existing Greenways
-  Proposed Greenways
-  Community Park
-  Neighbourhood Park
-  Open Space
-  Indoor Recreation Facilities
-  Schools
-  City Boundary
-  First Nations Lands
-  East Canoe Creek Watershed Boundary
-  Parcels
-  Streams

**Note:**

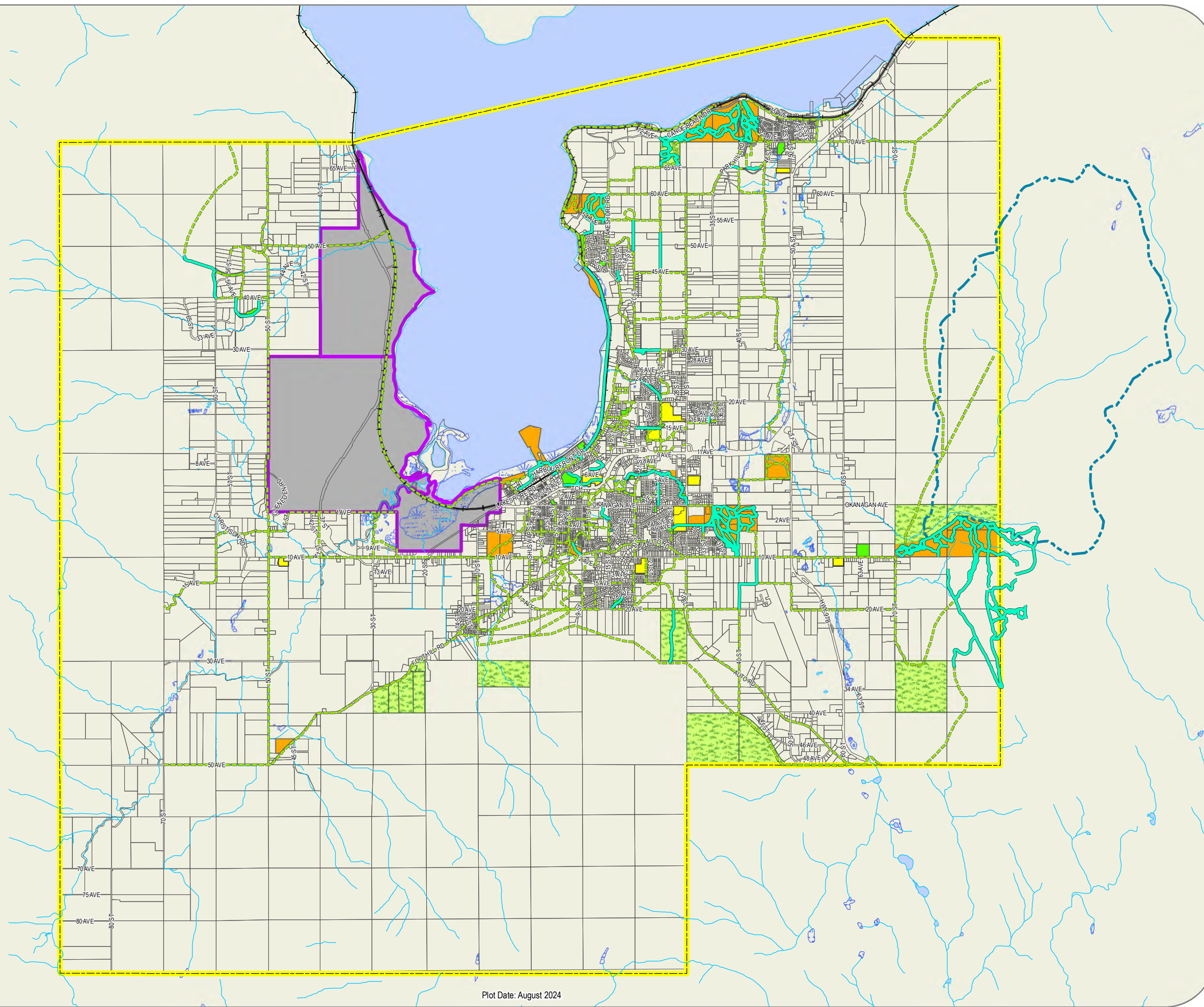
For Type and Priority of each existing and proposed greenway refer to Greenways Strategy.

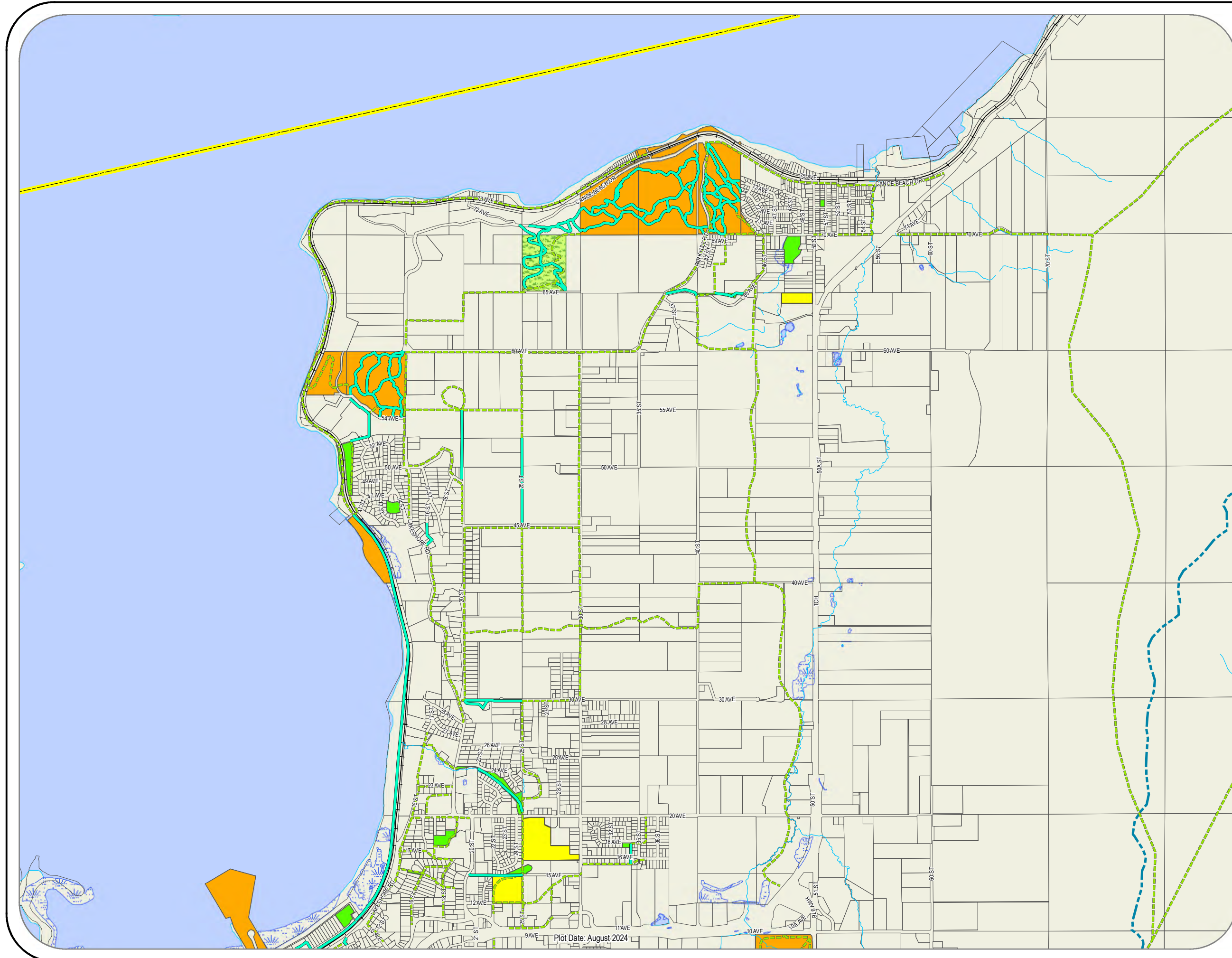
**DRAFT MAP ONLY -  
SUBJECT TO FURTHER  
AND MORE DETAILED  
REVIEW**

**Key Map**



Kilometers  
0 0.25 0.5 1





**Legend**

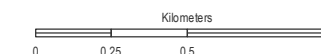
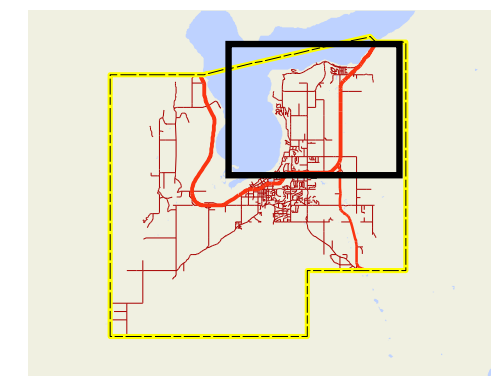
- Existing Greenways
- Proposed Greenways
- Community Park
- Neighbourhood Park
- Open Space
- Indoor Recreation Facilities
- Schools
- City Boundary
- First Nations Lands
- East Canoe Creek Watershed Boundary
- Parcels
- Streams

**Note:**

For Type and Priority of each existing and proposed greenway refer to Greenways Strategy.

**DRAFT MAP ONLY -  
SUBJECT TO FURTHER  
AND MORE DETAILED  
REVIEW**













**Key Map**





E

Legend

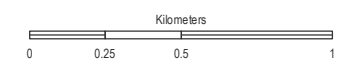
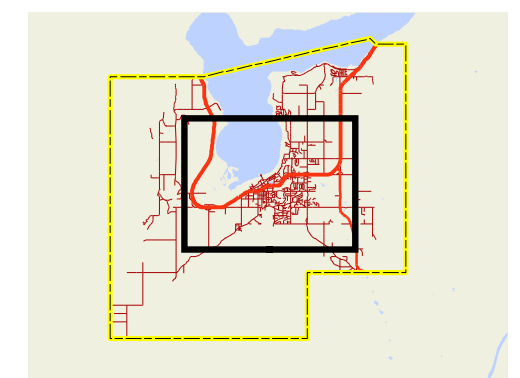
-  Existing Greenways
-  Proposed Greenways
-  Community Park
-  Neighbourhood Park
-  Open Space
-  Indoor Recreation Facilities
-  Schools
-  City Boundary
-  First Nations Lands
-  East Canoe Creek Watershed Boundary
-  Parcels
-  Streams

Note:

For Type and Priority of each existing and proposed greenway refer to Greenways Strategy.

**DRAFT MAP ONLY -  
SUBJECT TO FURTHER  
AND MORE DETAILED  
REVIEW**












Key Map



**DRAFT**  
**Existing and Proposed Parkland**  
**Map**

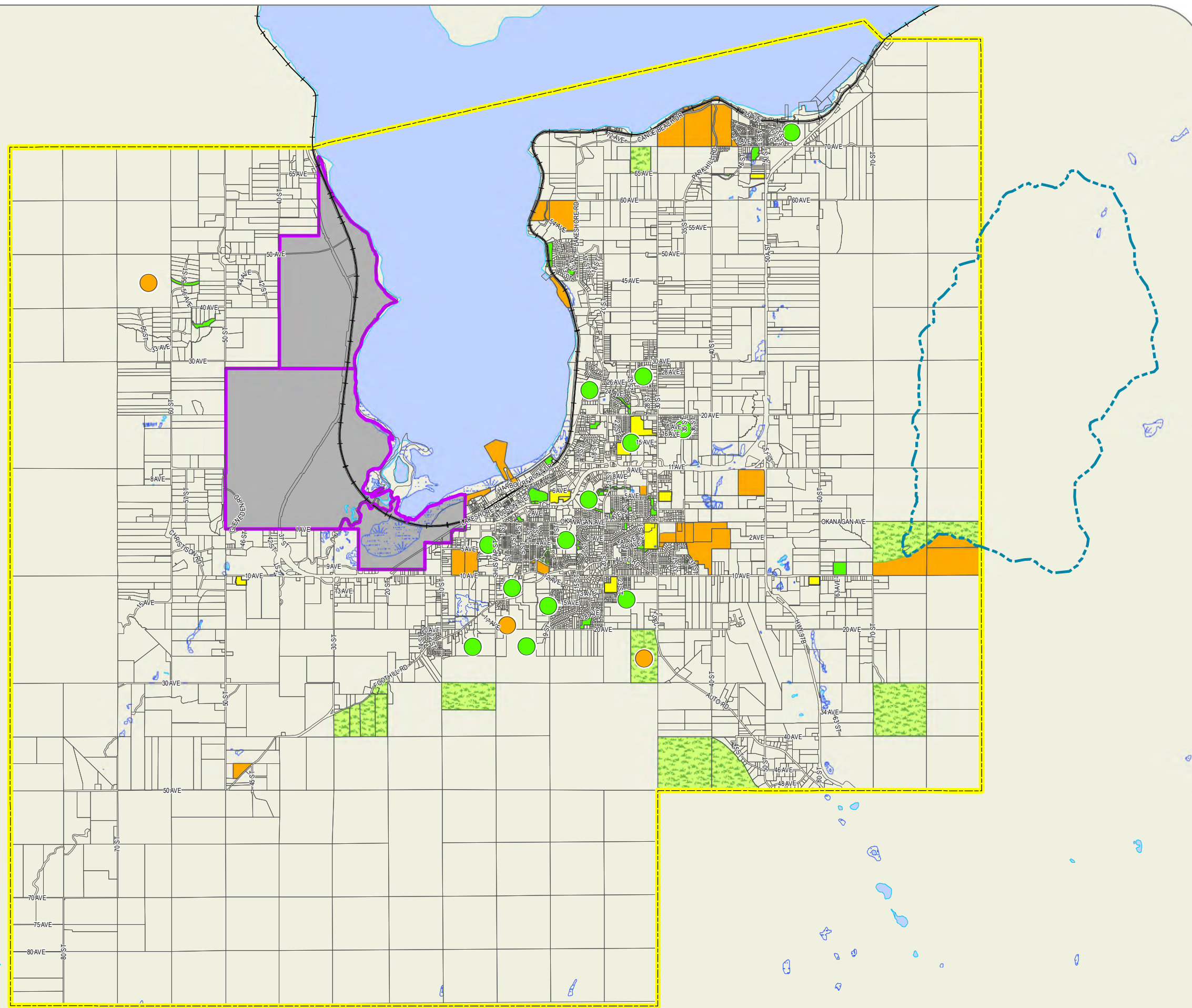
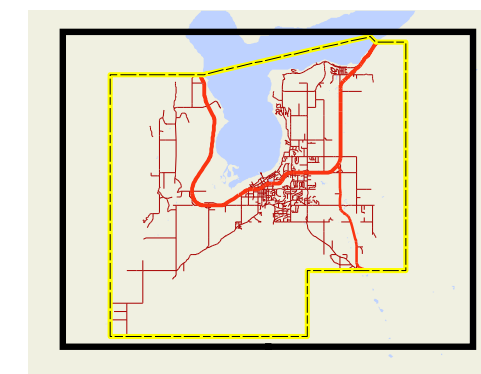
**MAP 10.2**

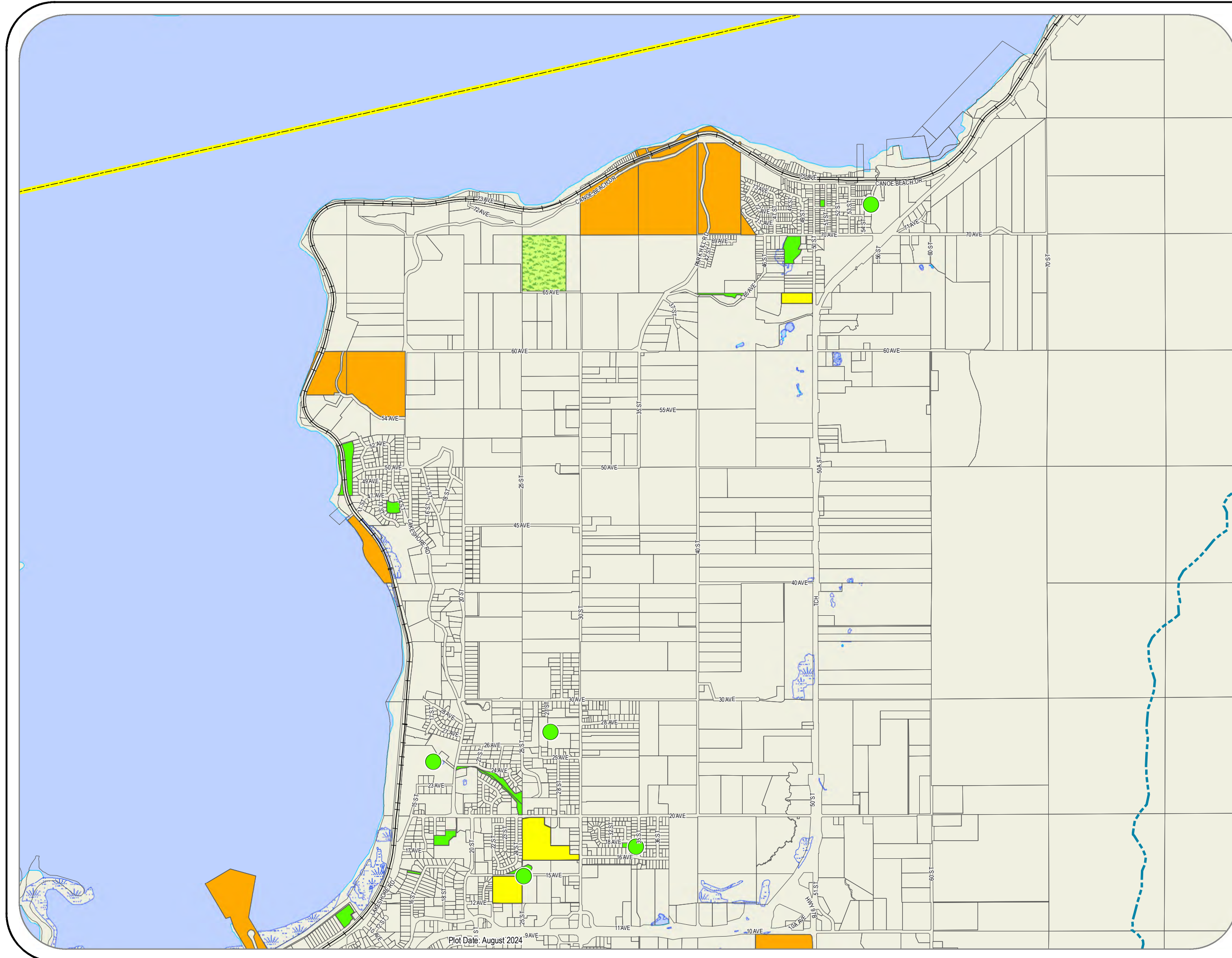
**Legend**

-  Community Park
-  Neighbourhood Park
-  Open Space
-  Indoor Recreation Facilities
-  Proposed Community Park (Approx. Location)
-  Proposed Neighbourhood Park (Approx. Location)
-  Schools
-  City Boundary
-  First Nations Lands
-  East Canoe Creek Watershed Boundary
-  Parcels

**DRAFT MAP ONLY -  
SUBJECT TO FURTHER  
AND MORE DETAILED  
REVIEW**

**Key Map**



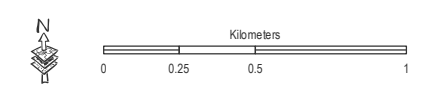
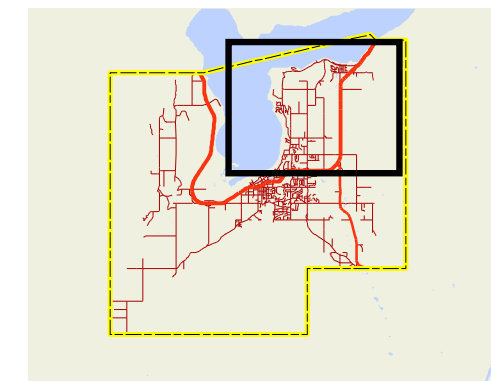


**Legend**

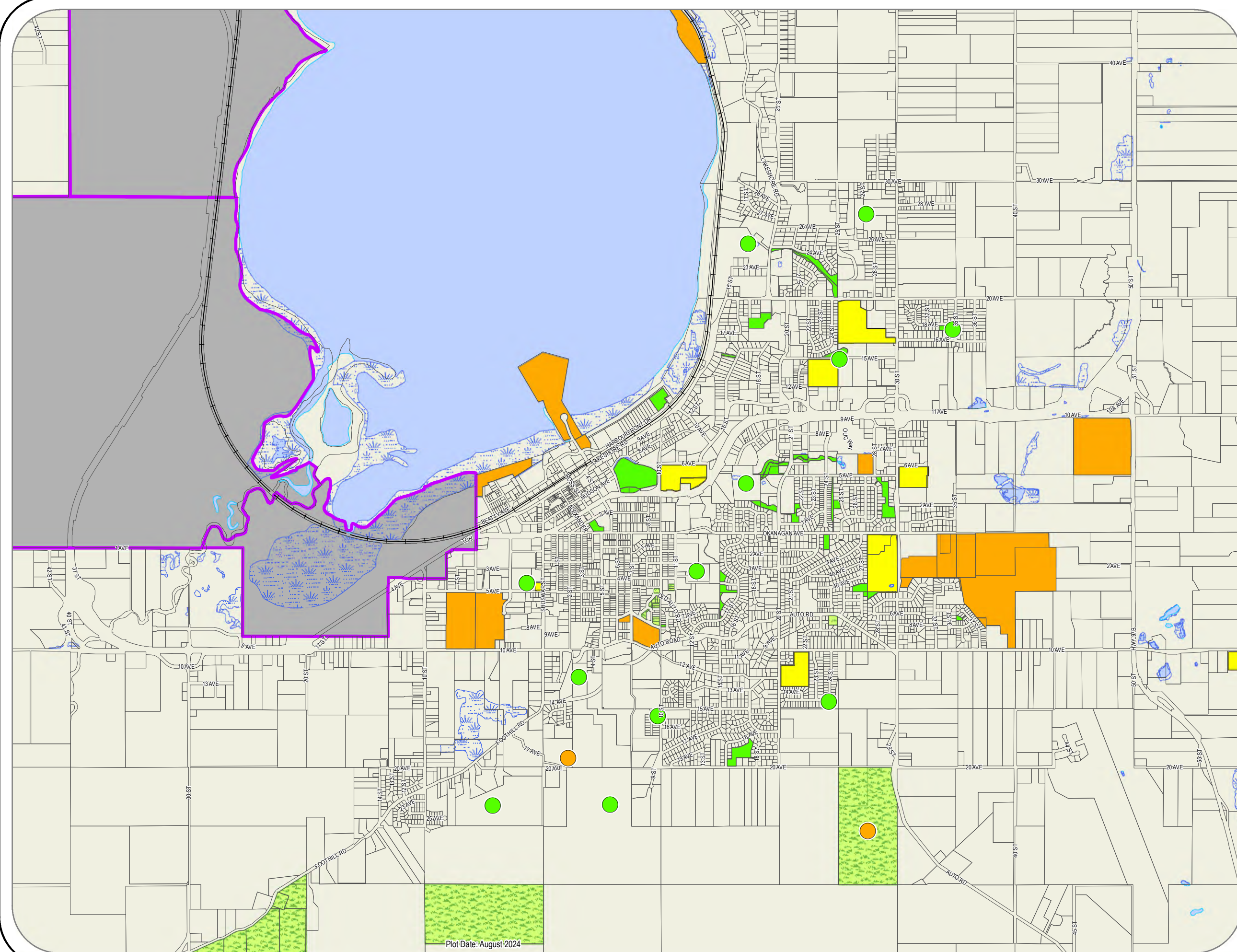
- Community Park
- Neighbourhood Park
- Open Space
- Indoor Recreation Facilities
- Proposed Community Park (Approx. Location)
- Proposed Neighbourhood Park (Approx. Location)
- Schools
- City Boundary
- First Nations Lands
- East Canoe Creek Watershed Boundary
- Parcels

**DRAFT MAP ONLY -  
SUBJECT TO FURTHER  
AND MORE DETAILED  
REVIEW**

**Key Map**



Plot Date: August 2024

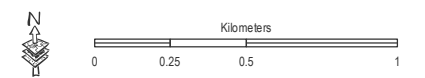
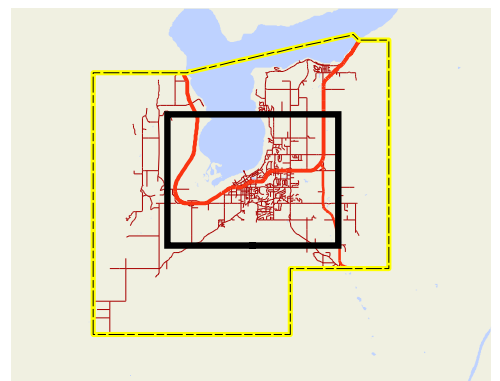


Legend

- Community Park
- Neighbourhood Park
- Open Space
- Indoor Recreation Facilities
- Proposed Community Park (Approx. Location)
- Proposed Neighbourhood Park (Approx. Location)
- Schools
- City Boundary
- First Nations Lands
- East Canoe Creek Watershed Boundary
- Parcels

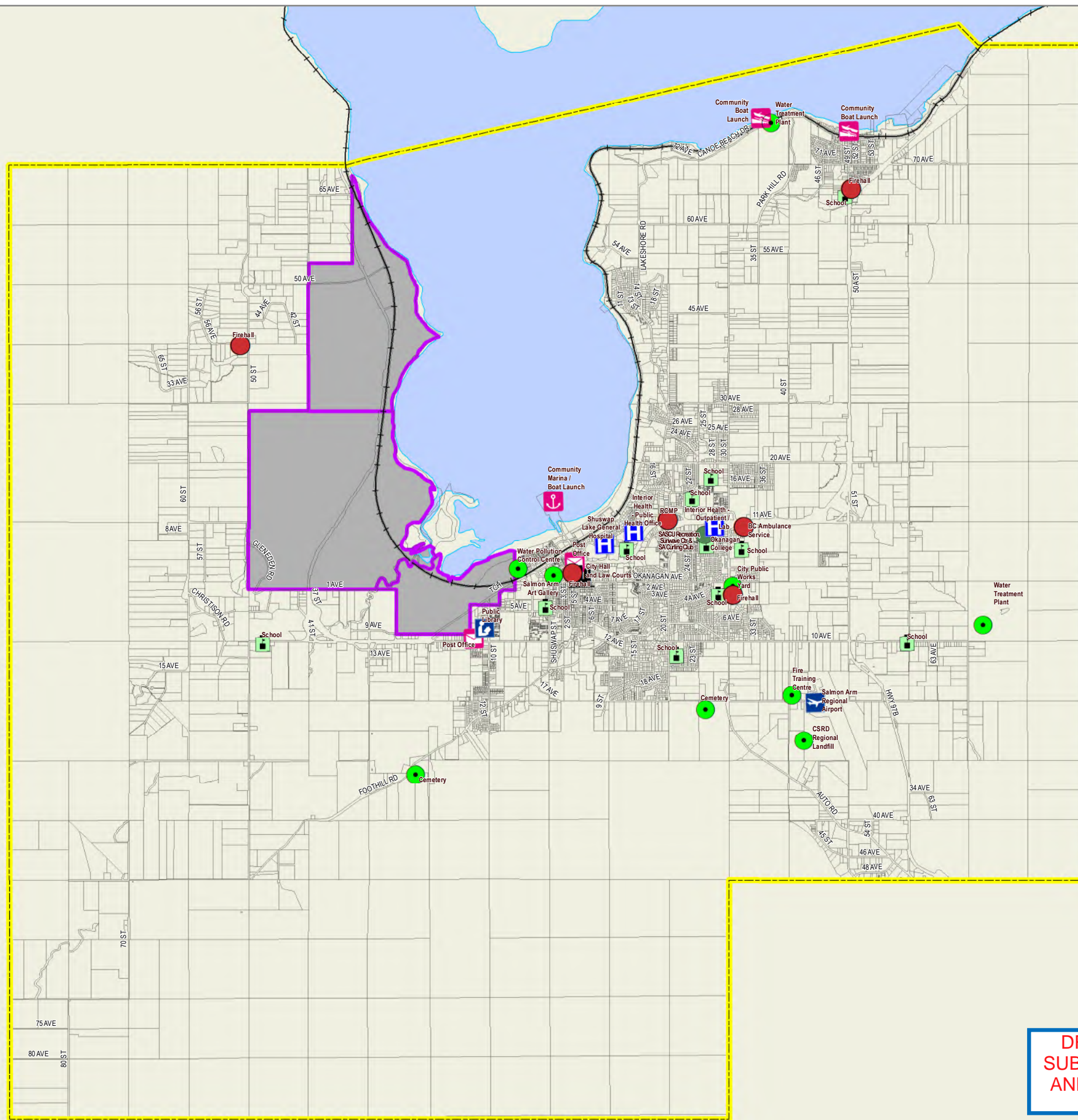
**DRAFT MAP ONLY -  
SUBJECT TO FURTHER  
AND MORE DETAILED  
REVIEW**

Key Map



Plot Date: August 2024

**DRAFT Community Facilities**  
MAP 10.3

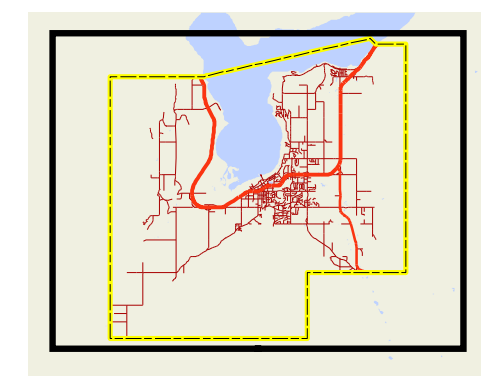


**Legend**

Community Facilities

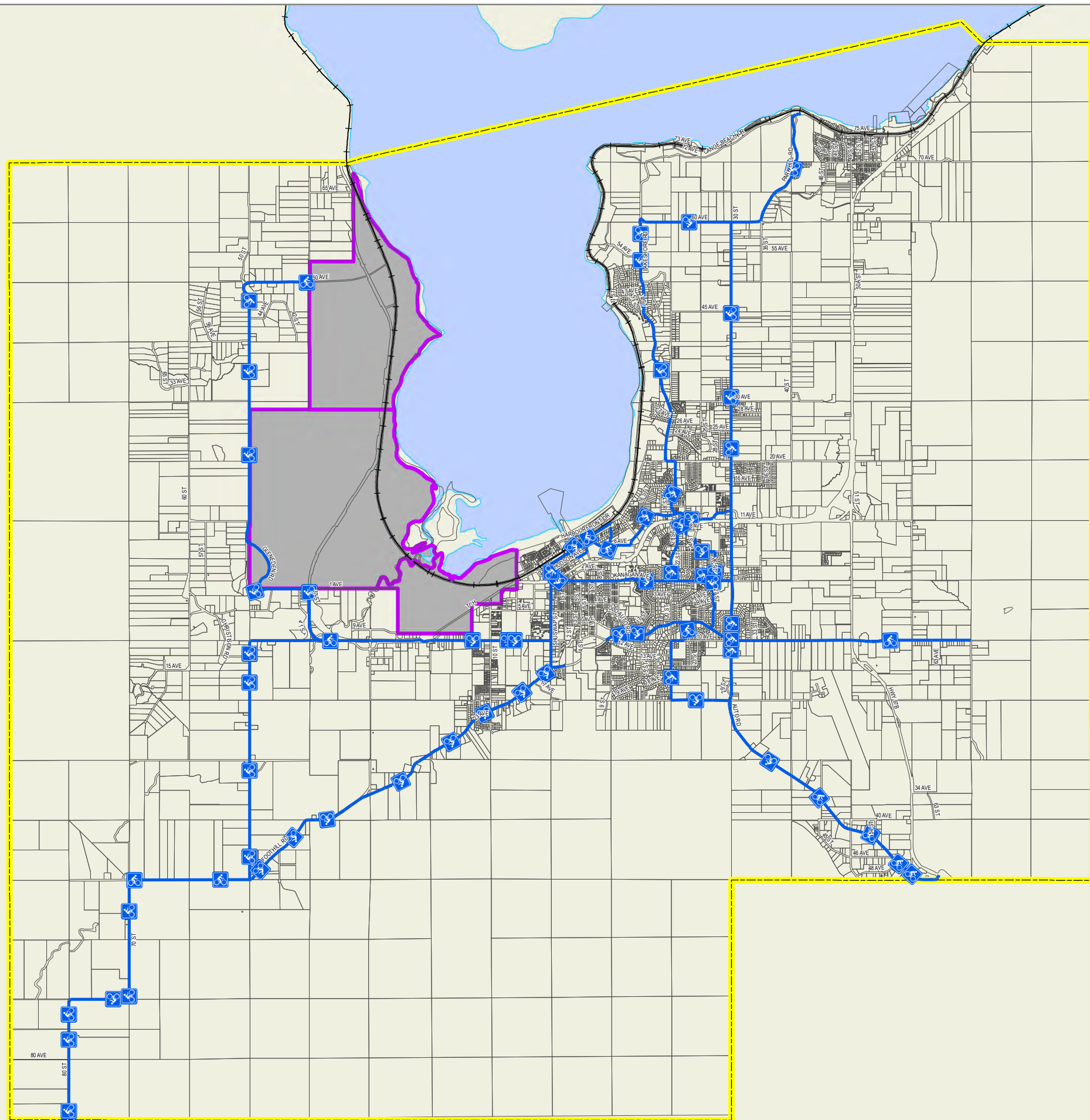
- Airport
- Ambulance / Fire / Police
- City Hall
- Health
- Library
- Community Boat Launch
- Community Marina / Boat Launch
- Post Office
- Recreation
- School
- Other
- City Boundary
- First Nations Lands
- Parcels

Key Map



**DRAFT MAP ONLY -  
SUBJECT TO FURTHER  
AND MORE DETAILED  
REVIEW**



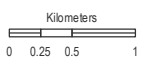
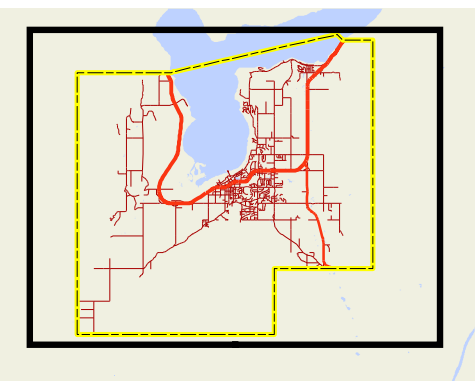


Legend

- Bike Route
- City Boundary
- First Nations Lands
- Parcels

**DRAFT MAP ONLY -  
SUBJECT TO FURTHER  
AND MORE DETAILED  
REVIEW**

Key Map



**DRAFT**  
**Road Network Plan**  
**Map**

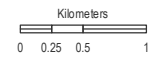
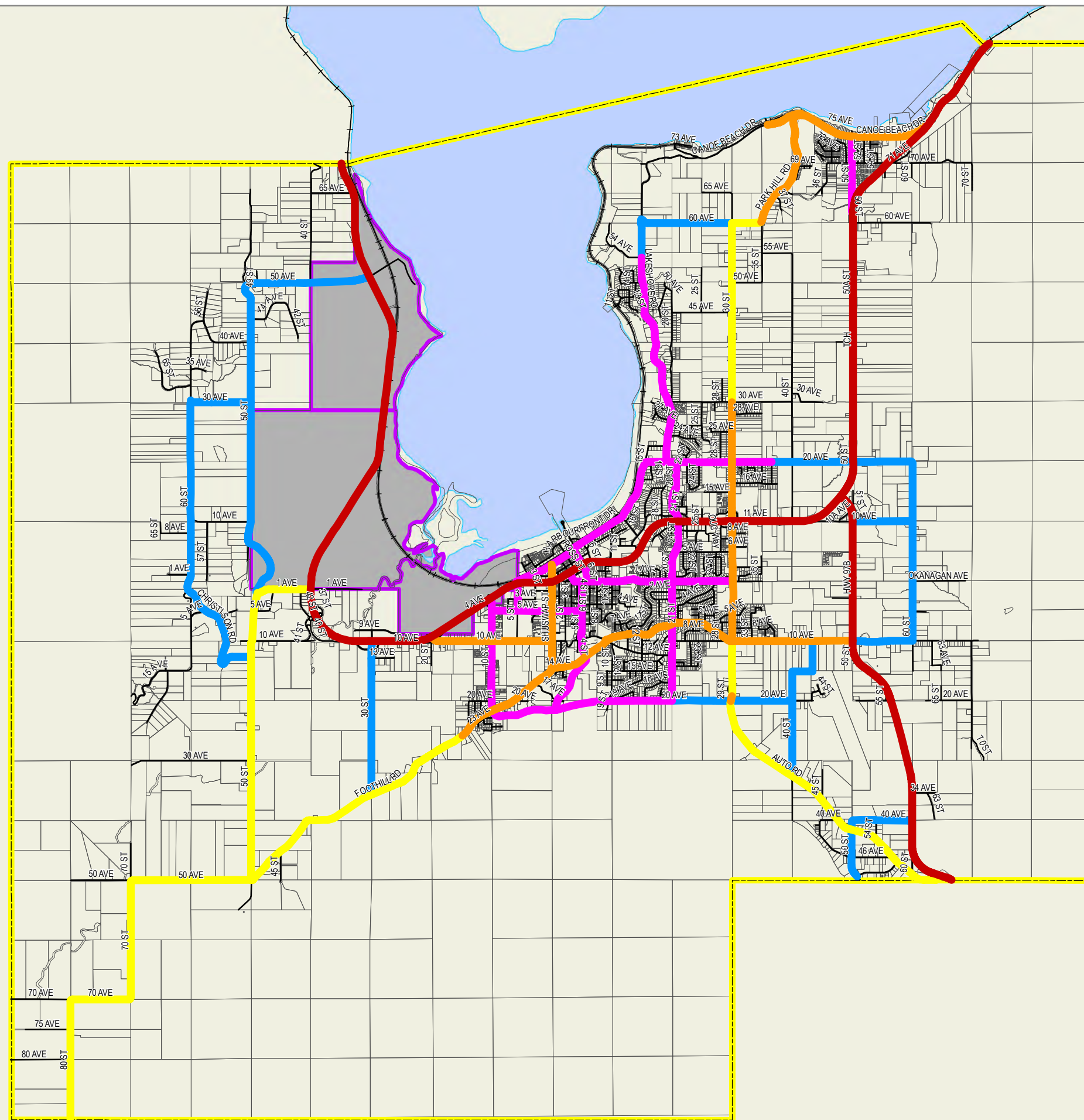
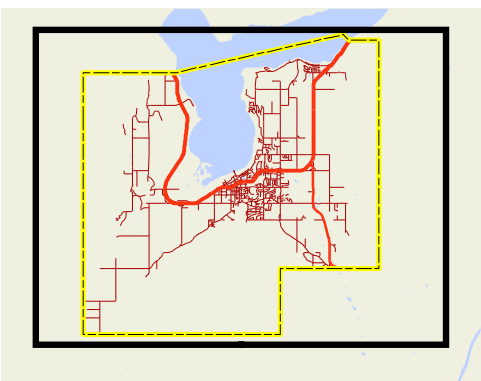
**MAP 13.2**

Legend

-  Designated Provincial Highways
-  Designated Urban Arterial Roads
-  Designated Rural Arterial Roads
-  Designated Urban Collector Roads
-  Designated Rural Collector Roads
-  Local Roads
-  City Boundary
-  First Nations Lands
-  Parcels

**DRAFT MAP ONLY -  
SUBJECT TO FURTHER  
AND MORE DETAILED  
REVIEW**









Key Map



**DRAFT**  
**Sanitary Sewer System**  
**Map**

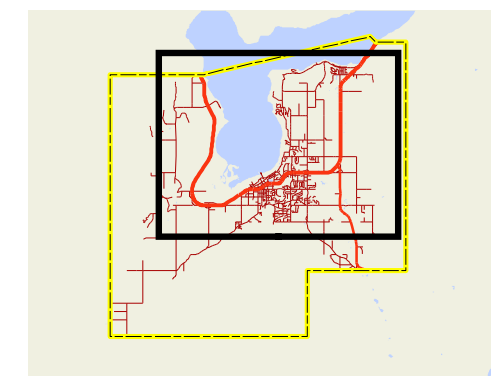
**MAP 14.1**

Legend

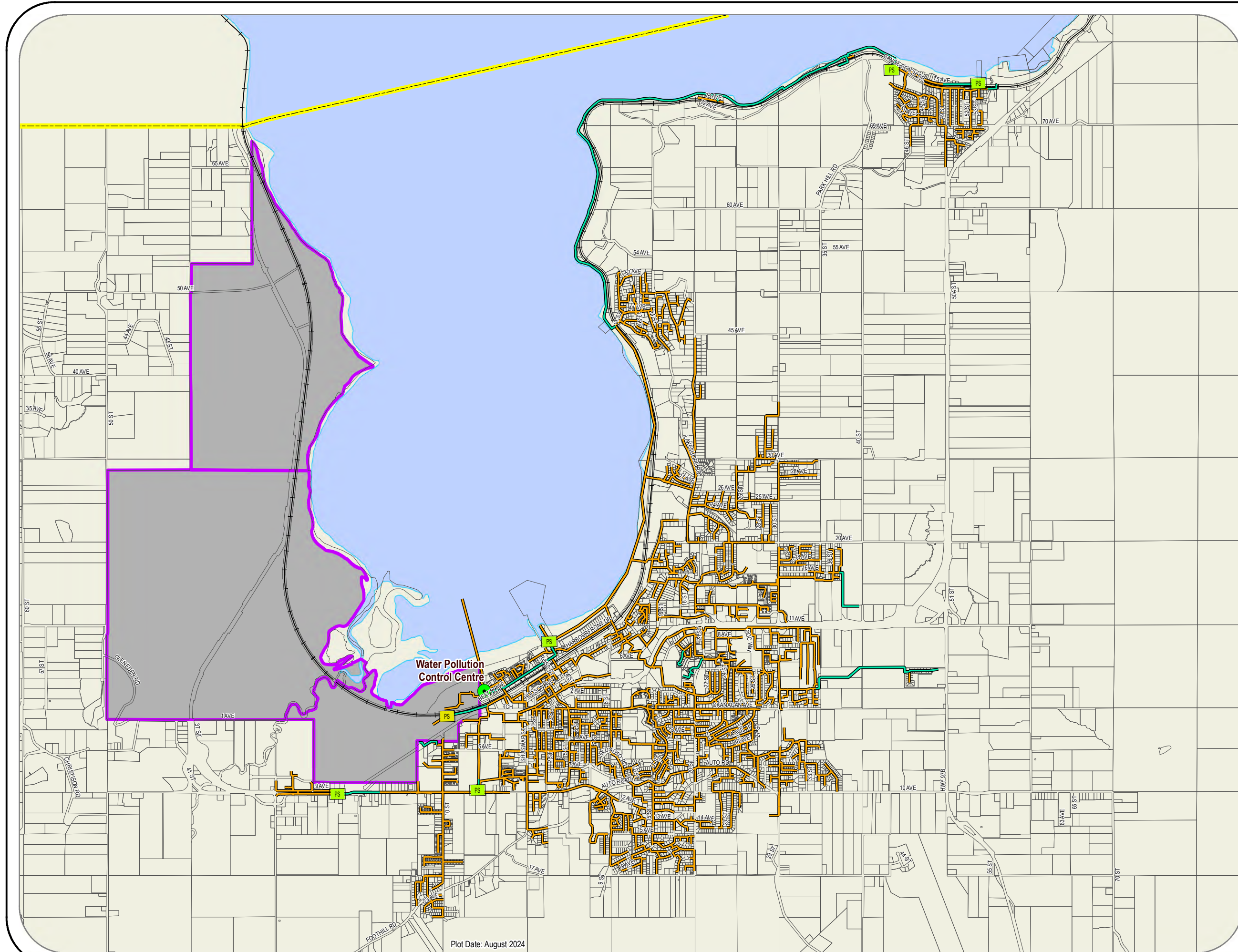
-  Water Pollution Control Center
-  Sanitary Liftstation
-  Sanitary Liftstation (Private)
-  Sanitary Sewer - Force Main
-  Sanitary Sewer - Gravity Main
-  City Boundary
-  First Nations Lands
-  Parcels

**DRAFT MAP ONLY -  
SUBJECT TO FURTHER  
AND MORE DETAILED  
REVIEW**

Key Map



Kilometers  
0 0.25 0.5 1





DRAFT  
Storm Drainage System  
Map  
MAP 14.2

Legend

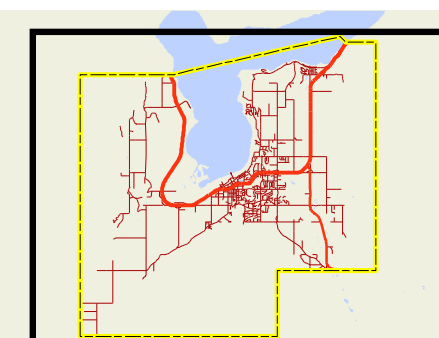
- Storm Sewer Main
- East Canoe Creek Watershed Boundary
- Drainage Basin Boundary
- Drainage Sub-Basin Boundary
- Creek Basin Boundary
- Creek Sub-Basin Boundary
- City Boundary
- First Nations Lands
- Parcels
- Streams

Note:

For Drainage and Creek basin information refer to Master Drainage Plan and Storm Drainage System Detail.

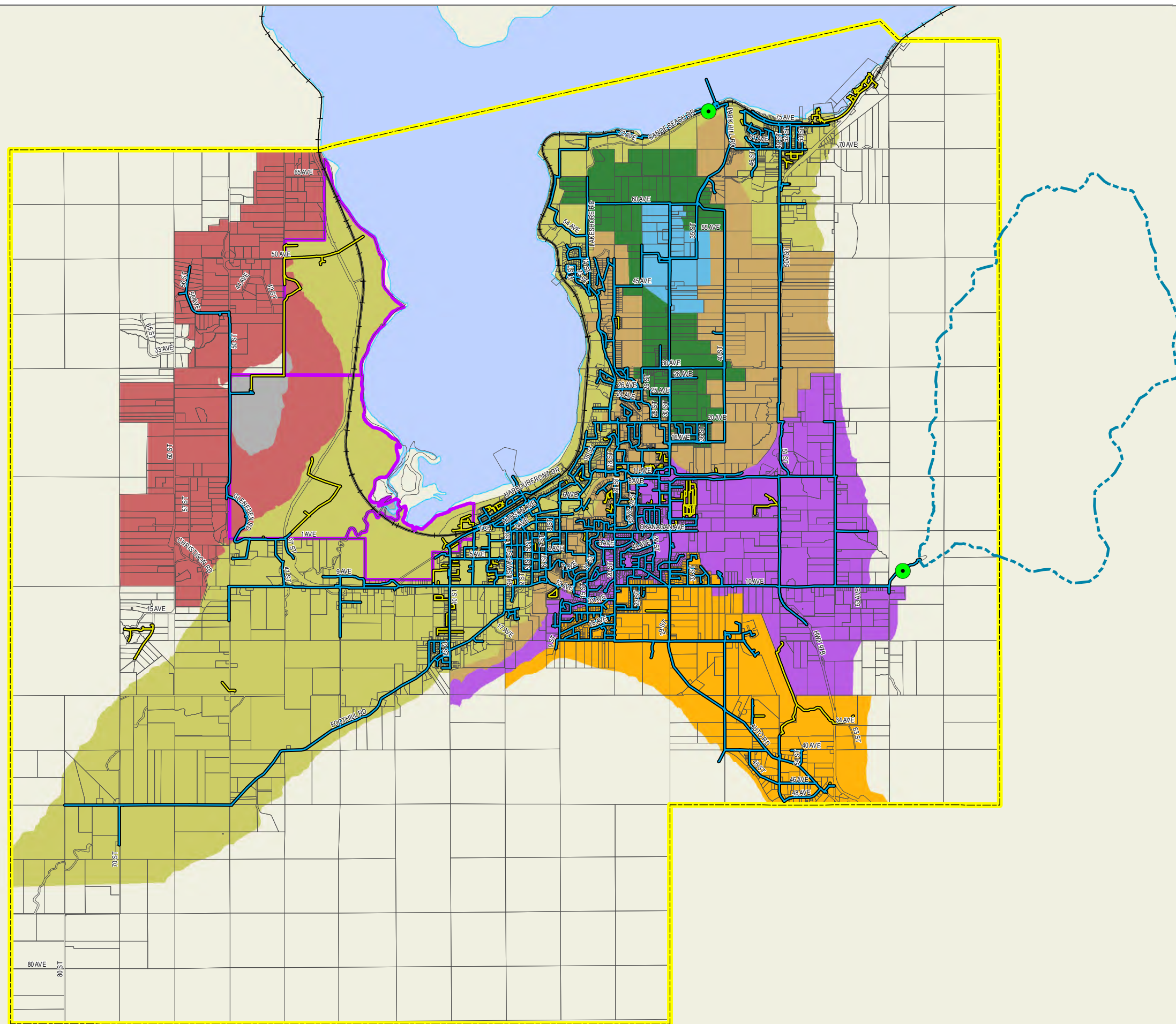
**DRAFT MAP ONLY -  
SUBJECT TO FURTHER  
AND MORE DETAILED  
REVIEW**

Key Map



Kilometers  
0 0.25 0.5 1

**DRAFT**  
**Water System**  
**Map**  
**MAP 14.3**

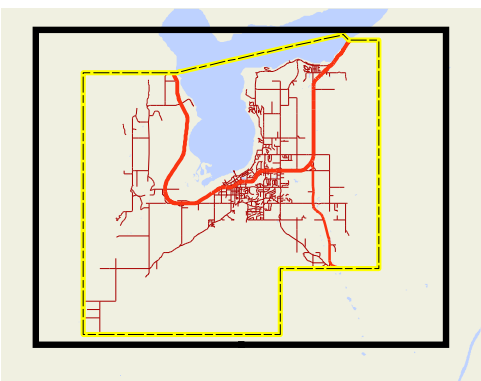


**Legend**

- Water Treatment Plant
- East Canoe Creek Watershed Boundary
- Water Main
- Private Water Main
- Water Pressure Zone 1
- Water Pressure Zone 2
- Water Pressure Zone 2a
- Water Pressure Zone 3
- Water Pressure Zone 3a
- Water Pressure Zone 4
- Water Pressure Zone 5
- City Boundary
- First Nations Lands
- Parcels

**DRAFT MAP ONLY -  
SUBJECT TO FURTHER  
AND MORE DETAILED  
REVIEW**

**Key Map**



Kilometers  
0 0.25 0.5 1

DRAFT  
Potential Hazard Areas  
Map

MAP 15.1

Legend

- 1:200 Year Floodplain
- 20-30% Slope
- >30% Slope
- Debris Hazard (Golder Associates Ltd.)
- City Boundary
- First Nations Lands
- Streams

DRAFT MAP ONLY -  
SUBJECT TO FURTHER  
AND MORE DETAILED  
REVIEW

Key Map

