

MAIN FLOOR SLAB
ELEVATION

12' x 14'

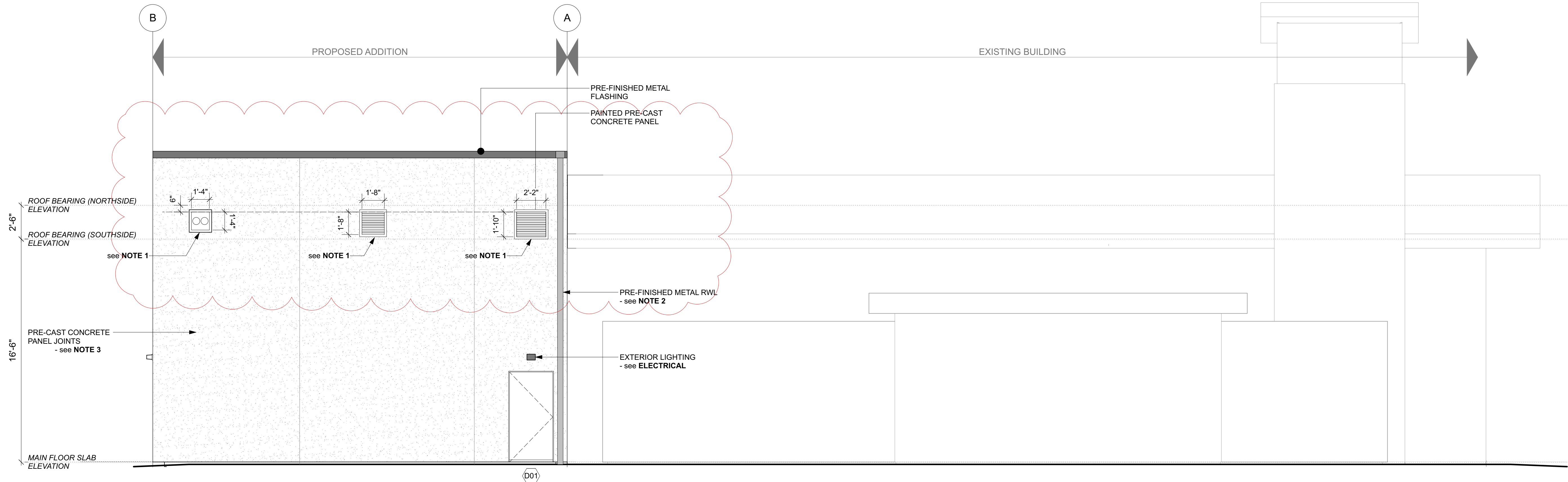
12' x 14'

BOLLARDS

Marc Lamerton, Architect AIBC
T 250-515-4801
E marc@avexarchitecture.ca
W www.avexarchitecture.ca

1 SOUTH ELEVATION

Scale: 1/4" = 1'-0"



ROOF BEARING (NORTHSIDE)
ELEVATION
2'-6"

ROOF BEARING (SOUTHSIDE)
ELEVATION
see NOTE 1

PRE-CAST CONCRETE
PANEL JOINTS
- see NOTE 3
16'-6"

MAIN FLOOR SLAB
ELEVATION

PRE-FINISHED METAL
FLASHING
PAINTED PRE-CAST
CONCRETE PANEL

PRE-FINISHED METAL RWL
- see NOTE 2

EXTERIOR LIGHTING
- see ELECTRICAL

EXISTING BUILDING

2 NORTH ELEVATION

Scale: 1/4" = 1'-0"

SKA-01b
(Aug. 09, 2024)

- ELEVATION NOTES**
- Opening locations for mechanical vents (specifications as per **Mechanical**).
- Contractor to coordinate openings with pre-cast wall supplier
 - Provide scupper through roof parapet, connected to pre-finished metal rain water leader.
- Grey, to match existing.
- All rain water to be collected into existing underground piping and directed into municipal stormwater system - see **Mechanical**.
 - Pre-cast concrete panel joints shown for illustrative purposes only. Panel configuration and joint location to be provided by panel fabricator / supplier. To be reviewed by **Structural Engineer** and **Architect**.

- DOOR SCHEDULE**
- DOOR 'D01'** - 3'-0" x 7'-0", Insulated flush metal, door closer, threshold, weather seals, pressed metal frame
 - DOOR 'D02'** - 3'-0" x 7'-0", Insulated flush metal, door closer, threshold, weather seals, pressed metal frame
 - DOOR 'D03'** - 10'-0" x 12'-0", Insulated pre-finished metal overhead door
- c/w sealed double-glazed lights (see **Elevations**)
- power operated
 - DOOR 'D04'** - 10'-0" x 12'-0", Insulated pre-finished metal overhead door
- c/w sealed double-glazed lights (see **Elevations**)
- power operated

PROJECT: 22-030
CITY OF SALMON ARM
- FIRE HALL #2
Truck Bay Addition

OPTION 'B'
- PRE-CAST EXTERIOR WALL

200 - 30th Street SE
Salmon Arm, BC

DRAWING TITLE:
ELEVATIONS

DRAWING NO:
A3.2