

LIST OF DRAWINGS		
DRAWING No.	DRAWING NAME	REVISION No.
ELECTRICAL		
E0.0	LEGEND	0
E1.0	LIGHTING PLAN	0
E1.1	AUXILIARY PLAN	0
E2.0	SCHEDULES	0
E3.0	SPECIFICATIONS	0

**CITY OF SALMON ARM - FIRE HALL
#2 BUILDING**

SALMON ARM, B.C.



PROJECT No. : 24VR-596400

ALL DRAWINGS AND SPECIFICATIONS ARE PROPERTY OF BAR ENGINEERING CO. LTD. AND SHALL NOT BE USED WITHOUT WRITTEN CONSENT. THE CONTRACTOR SHALL VERIFY ALL DIMENSIONS, DATUMS, AND DETAILED INFORMATION SHOWN ARE CORRECT PRIOR TO COMMENCING CONSTRUCTION AND SHALL REPORT ANY DISCREPANCIES PROMPTLY TO BAR ENGINEERING PRIOR TO COMMENCEMENT OF WORK. DO NOT SCALE THE DRAWING UNLESS PRINTED OUT ON 24" x 36" (610mm x 914mm) ARCH D SHEET. THIS DRAWING SHALL NOT BE USED FOR CONSTRUCTION PURPOSES UNLESS SIGNED FOR IFC. SEAL:

PERMIT TO PRACTICE
BAR ENGINEERING CO. LTD.
PERMIT NUMBER: 1001776
Engineers and Geoscientists BC
Member #45804 05 July 2024

0 1 2 3 4 5 6 7 8 9
No. BY [ENG] APR 2024 07/05
ISSUED FOR TENDER
DESCRIPTION DATE

COMMUNICATIONS table with columns: SYMBOL, DESCRIPTION, MOUNTING. Includes symbols for telephone outlets, data outlets, CATV, speakers, and handicap push buttons.

SECURITY table with columns: SYMBOL, DESCRIPTION, MOUNTING. Includes symbols for key pads, card readers, motion sensors, cameras, and alarm panels.

UTILITIES table with columns: SYMBOL, DESCRIPTION. Includes symbols for overhead/underground utility distribution, transformers, and meters.

DRAWING GRAPHICS table with columns: SYMBOL, DESCRIPTION. Includes symbols for existing devices to be demolished or remain, and new devices.

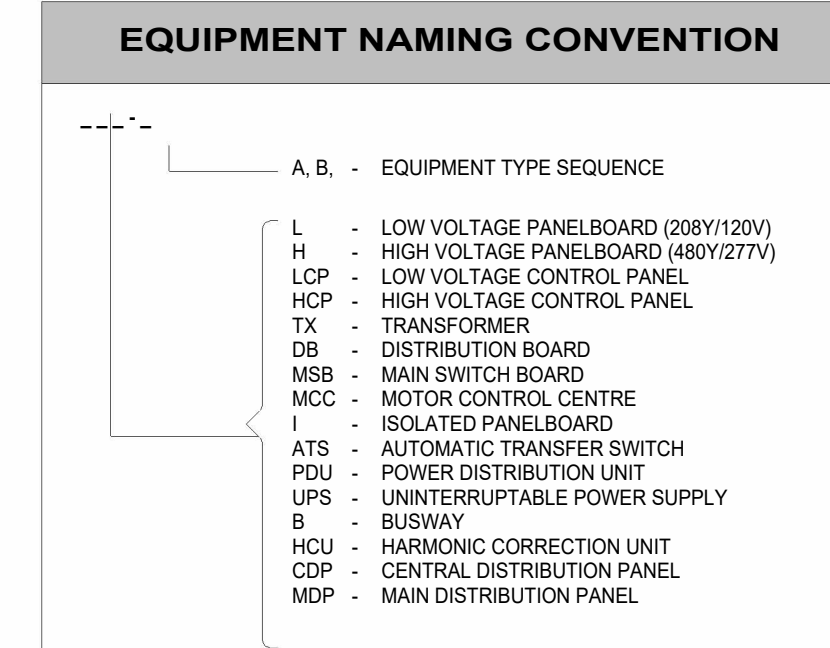
LIGHTING table with columns: SYMBOL, DESCRIPTION, MOUNTING. Includes sections for fixture types, switches and lighting controls, and symbols for various light fixtures and controls.

SWITCHES AND LIGHTING CONTROLS table with columns: SYMBOL, DESCRIPTION, MOUNTING. Includes symbols for line switches, gang switches, and various control modules.

POWER DEVICES table with columns: SYMBOL, DESCRIPTION, MOUNTING. Includes symbols for receptacles, switches, relays, and other electrical components.

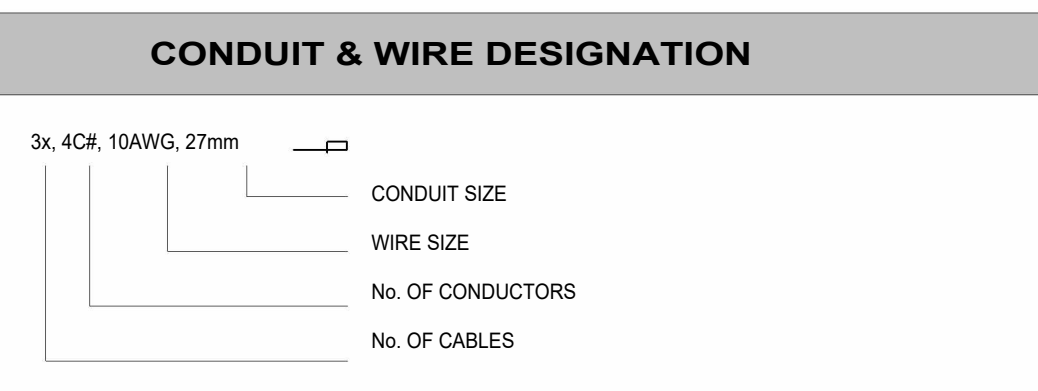
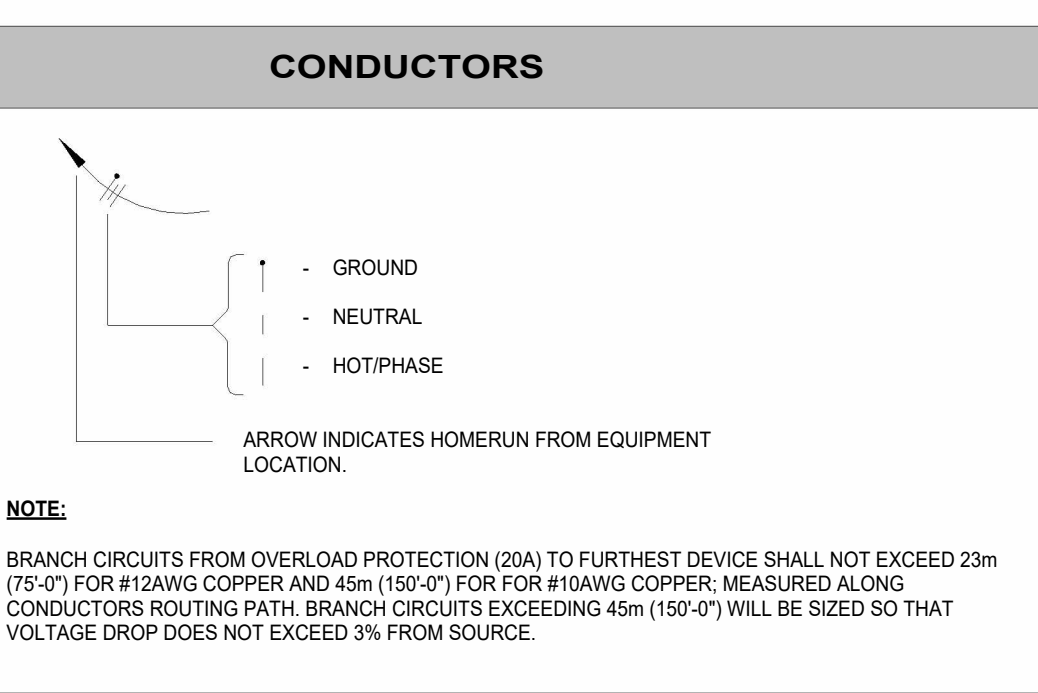
FIRE ALARM table with columns: SYMBOL, DESCRIPTION, MOUNTING. Includes symbols for control panels, horns, strobe lights, and detectors.

EQUIPMENT table with columns: SYMBOL, DESCRIPTION. Lists symbols for various equipment types like main switchboards, motor control centres, and ground bars.



SINGLE LINE table with columns: SYMBOL, DESCRIPTION. Lists symbols for ammeters, circuit breakers, contactors, transformers, and other single-line equipment.

ABBREVIATIONS table with columns: A, L. Lists standard electrical abbreviations for terms like amperes, meters, switches, and conductors.



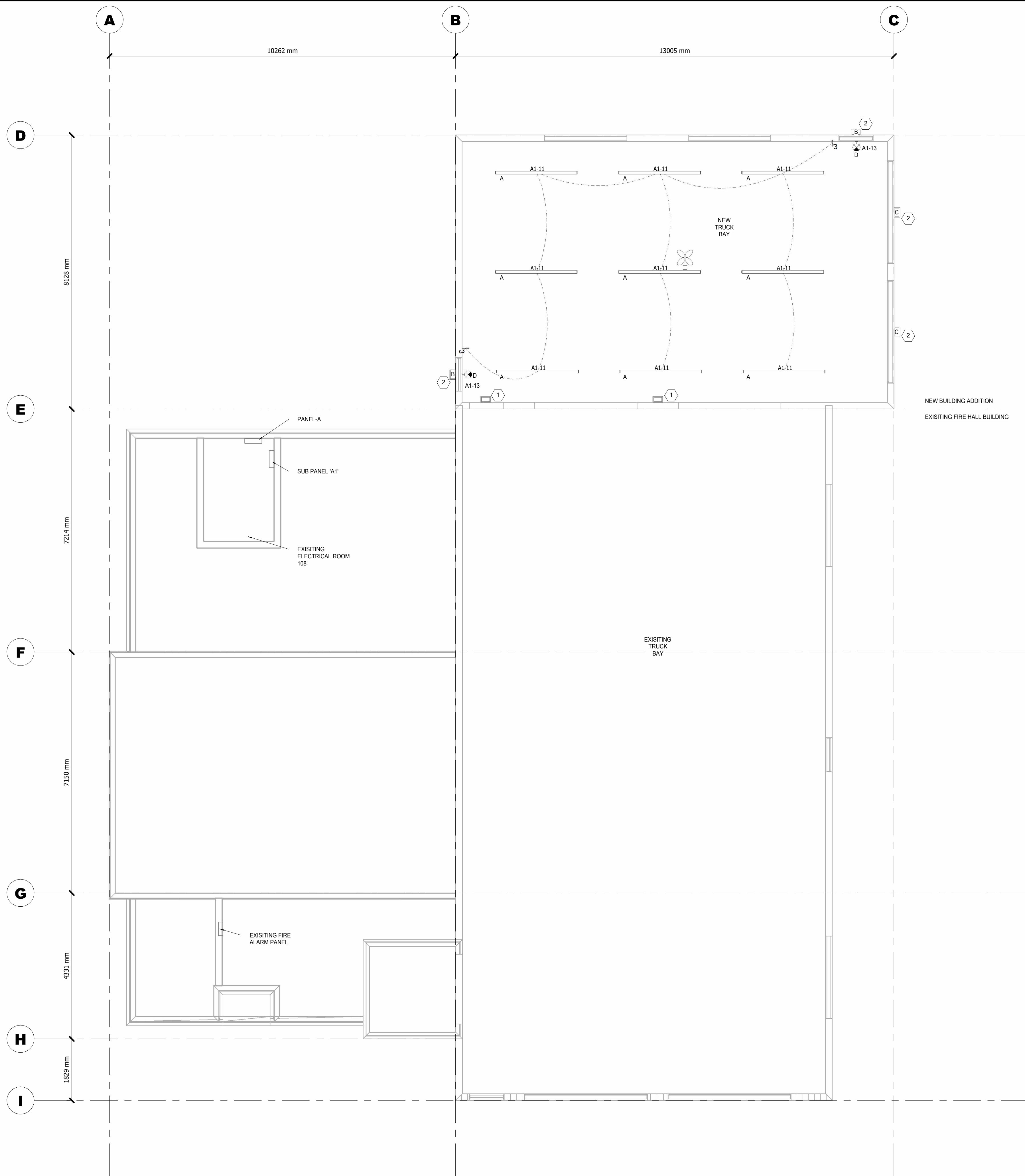
CLIENT:

CoSA FIRE HALL #2

LIGHTING PLAN KEY NOTES:

- ① EXISTING EXTERIOR LIGHT FIXTURES TO BE REMOVED.
- ② RE-USE EXISTING EXTERIOR LIGHTING CIRCUIT AND CONTROLS FOR NEW EXTERIOR LIGHTING.

2 LIGHTING KEY NOTES
1" = 1'-0"



1 LIGHTING PLAN
3/16" = 1'-0"

ALL DRAWINGS AND SPECIFICATIONS ARE PROPERTY OF BAR ENGINEERING CO. LTD. AND SHALL NOT BE USED WITHOUT PRIOR WRITTEN CONSENT.

THE CONTRACTOR SHALL VERIFY ALL DIMENSIONS, DATUMS, AND DETAILS INFORMATION SHOWN ARE CORRECT PRIOR TO COMMENCING CONSTRUCTION AND SHALL REPORT ANY DISCREPANCIES PROMPTLY TO BAR ENGINEERING PRIOR TO COMMENCEMENT OF WORK.

DO NOT SCALE THE DRAWING UNLESS PRINTED OUT ON 24"x36" (610mmx915mm) ARCH D SHEET.

THIS DRAWING SHALL NOT BE USED FOR CONSTRUCTION PURPOSES UNTIL SIGNED FOR IFC.

SEAL:



PERMIT:

PERMIT TO PRACTICE
BAR ENGINEERING CO. LTD.
PERMIT NUMBER: 1001776
Engineers and Geoscientists BC
Member #45804 05 July 2024

0	AW	JY	ISSUED FOR TENDER	2024/07/05
No.	BY	[ENG] APR	DESCRIPTION	DATE

CITY OF SALMON
ARM - FIRE HALL #2
BUILDING

LOCATION:

SALMON ARM, B.C.

DRAWING NAME:

LIGHTING PLAN

PROJECT NO.:

24VR-596400

DRAWING NO.:

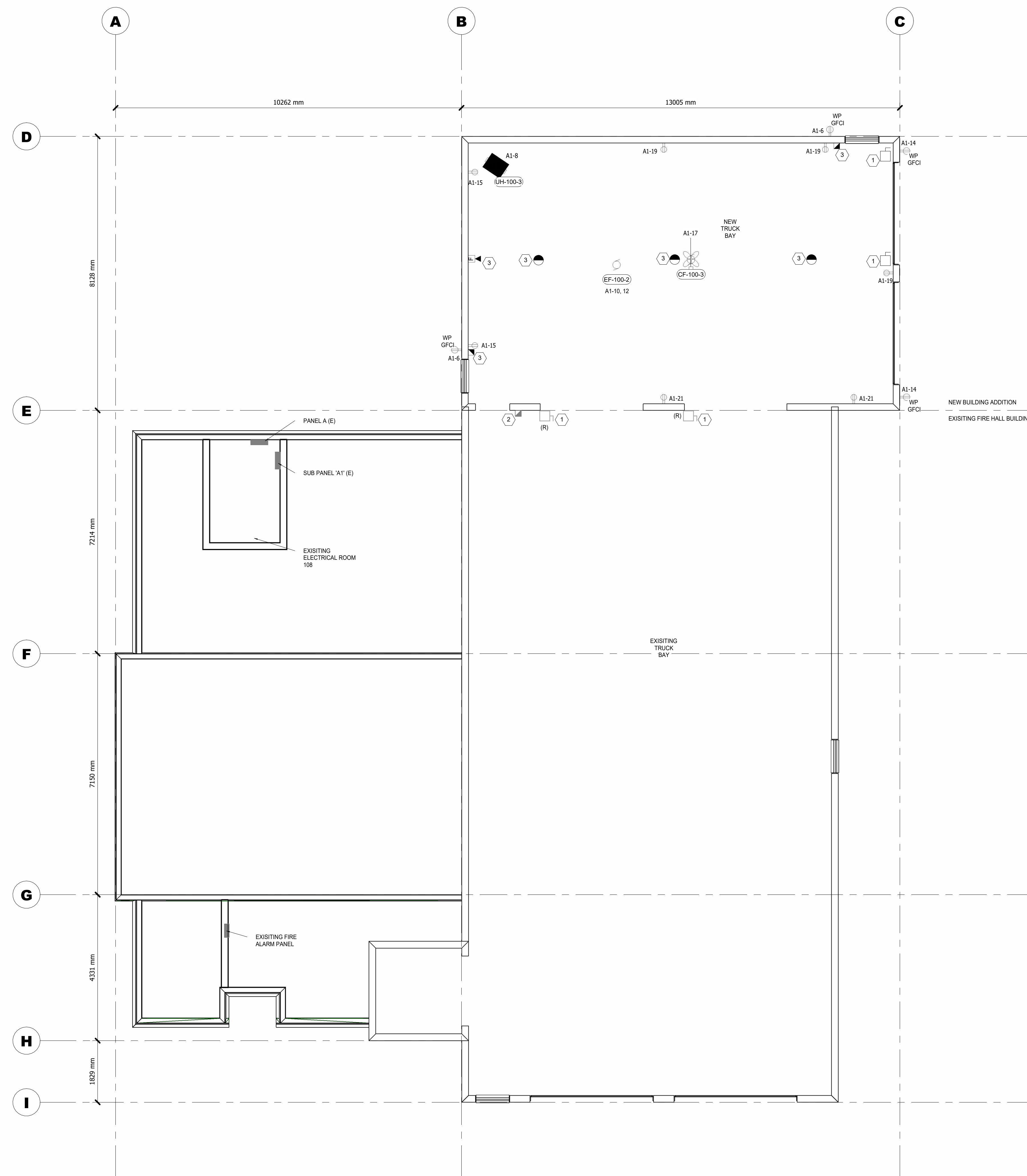
E1.0

CLIENT:

CoSA FIRE HALL #2

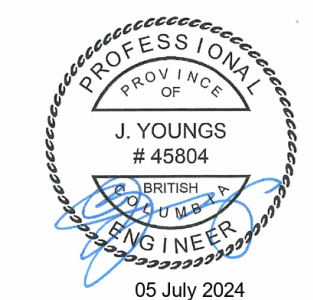
- AUXILIARY PLAN KEY NOTES:**
- ① EXISTING OVERHEAD DOOR OPERATORS TO BE RE-LOCATED TO NEW TRUCK BAY. RE-USE EXISTING CIRCUITS AND EXTEND WIRING TO NEW OPERATOR LOCATION.
 - ② EXISTING FIRE ALARM MANUAL PULL STATION TO BE REMOVED.
 - ③ NEW FIRE ALARM INITIATING AND SIGNALLING DEVICE TO BE TIED INTO EXISTING CONVENTIONAL FIRE ALARM DEVICE LOOPS.

2 AUXILIARY KEY NOTES
1" = 1'-0"



1 AUXILIARY PLAN
3/16" = 1'-0"

ALL DRAWINGS AND SPECIFICATIONS ARE PROPERTY OF BAR ENGINEERING CO. LTD. AND SHALL NOT BE USED WITHOUT PRIOR WRITTEN CONSENT.
THE CONTRACTOR SHALL VERIFY ALL DIMENSIONS, DATUMS, AND DETAILED INFORMATION SHOWN ARE CORRECT PRIOR TO COMMENCING CONSTRUCTION AND SHALL REPORT ANY DISCREPANCIES PROMPTLY TO BAR ENGINEERING PRIOR TO COMMENCEMENT OF WORK.
DO NOT SCALE THE DRAWING UNLESS PRINTED OUT ON 24"x36" (610mmx915mm) ARCH D SHEET.
THIS DRAWING SHALL NOT BE USED FOR CONSTRUCTION PURPOSES UNTIL SIGNED FOR IFC.
SEAL:



PERMIT:
PERMIT TO PRACTICE
BAR ENGINEERING CO. LTD.
PERMIT NUMBER: 1001776
Engineers and Geoscientists BC
Member #45804 05 July 2024

0	AW	JY	ISSUED FOR TENDER	2024/07/05
No.	BY	[ENG] APR	DESCRIPTION	DATE

CITY OF SALMON
ARM - FIRE HALL #2
BUILDING

LOCATION:
SALMON ARM, B.C.

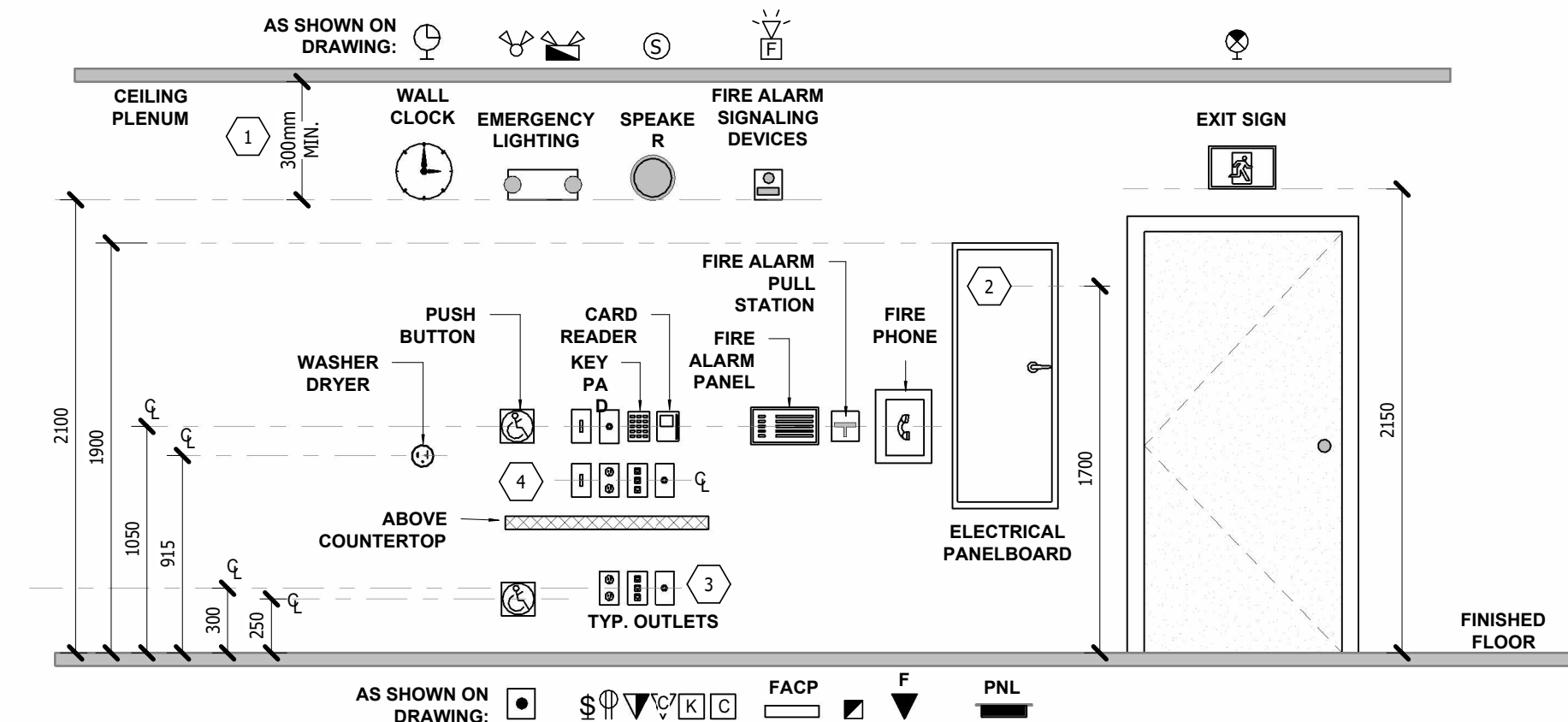
DRAWING NAME:
AUXILIARY PLAN

PROJECT NO.: 24VR-596400
DRAWING NO.:

E1.1

LIGHTING FIXTURE SCHEDULE										
MARK	IMAGE	QUANTITY	MANUF.	SERIES	CATALOG NUMBER	WATTAGE (W)	LUMINOUS FLUX (lm)	COLOUR TEMP. (K)	CRI	REMARKS
A		9	LITHONIA LIGHTING	CLX	CLX L96 10000LM SEF FDL MVOLT 40K 80CRI	63.7	10000	4000	80	8 FOOT LED STRIP LIGHT
B		2	LITHONIA LIGHTING	WDGE2	WDGE2 LED P1SW 40K 80CRI VW	10	1289	4000	80	LED WALL PACK, LOW LUMEN PACKAGE, DARK BRONZE FINISH.
C		2	LITHONIA LIGHTING	WDGE2	WDGE2 LED P3SW 40K 80CRI VW MVOLT	23	3213	4000	80	LED WALL PACK, MEDIUM WIDE LUMEN PACKAGE, DARK BRONZE FINISH.
D		2	LUMACELL	LAC	LAC-1-W-627-2-LD2	-	-	-	-	COMBINATION UNIT EXIT SIGN, 6V-27W BATTERY PACK, DUAL 6V-5W MR16 LED HEADS

PANEL: SUB PNL-A1													
LOCATION: MECH/ ELEC, 108													
120/240 Single, 1PH, 3W, 225 A													
DESCRIPTION	TRIP AMPS	POLES	BRK. NO.	A	B	BRK. NO.	POLES	TRIP AMPS	DESCRIPTION				
GEM COM PLUG	20 A	1	A1-1	0 W						A1-2			
COUNTER PLUG	15 A	2	A1-3	0 W	360 W	0 W				A1-4			
			A1-5	0 W	360 W	0 W			A1-6	1	20 A	WP RECEPTACLE	
			A1-7	0 W	750 W	0 W	400 W			A1-8	1	15 A	UH-100-3
BOOSTER PUMP	30 A	2	A1-9	0 W	750 W					A1-10			
LIGHTING - TRUCK BAY	20 A	1	A1-11			580 W	750 W			A1-12	2	30 A	EF-100-2
EMERG. LIGHT/ EXIT SIGNS	15 A	1	A1-13	30 W	360 W					A1-14	1	20 A	WP RECEPTACLE
RECEPTACLE	20 A	1	A1-15			360 W				A1-16			
CF-100-3	20 A	1	A1-17	250 W						A1-18			
RECEPTACLE	20 A	1	A1-19			540 W				A1-20			
RECEPTACLE	20 A	1	A1-21	360 W						A1-22			
			A1-23							A1-24			
Total Load:				2110 W		2630 W							
Total Amps:				18 A		22 A							



GENERAL NOTES:
1. ALL MEASUREMENTS ARE TO BE THE CENTER OF DEVICE BOX UNLESS OTHERWISE INDICATED.

KEY NOTES:
1. INSTALL AT 2100mm AFF OR 300mm BELOW CEILING, WHICHEVER IS LOWER.
2. TOP BREAKERS IN PANELBOARD TO BE AT MAXIMUM HEIGHT OF 1700mm AFF (ABOVE FINISHED FLOOR).
3. ALL RECEPTACLES AND SWITCHES INSTALLED IN ACCESSIBLE AREAS TO BE INSTALLED WITHIN AFF GUIDELINES (455mm AND 1067mm MAXIMUM).
4. FOR KITCHEN, COFFEE STATIONS AND WORK AREAS MOUNTING HEIGHTS REFER TO ARCHITECTURAL DRAWINGS.

1 TYPICAL ELEVATION DETAILS
NTS

MECHANICAL/MOTOR EQUIPMENT SCHEDULE														
MOTOR No.	DESCRIPTION	LOCATION	ELECTRICAL SPECIFICATIONS							FEEDER	CONDUIT	MOTOR CONTROL	CCT	COMMENTS
			HP	VOLTS	KW	PHASE	MCA	FLA	BREAKER					
CF-100-3	CEILING FAN	NEW TRUCK BAY	-	120	-	1	-	-	1P15A	2C #12AWG CU + #14AWG BOND	21mm	SWITCH	PANEL A1	WALL SWITCH CONTROL BY MECH. INTERLOCK WITH EXISTING CEILING FANS
EF-100-2	EXHAUST FAN	NEW TRUCK BAY	2	240	1.5	1	15	12	2P30A	2C #10AWG CU + #12AWG BOND	21mm	VFD	PANEL A1	VFD PROVIDED BY MECH. VFD TO PROVIDE PHASE CONVERSION FROM SINGLE TO THREE PHASE
UH-100-3	UNIT HEATER	NEW TRUCK BAY	0.25	120	0.4	1	-	3.8	1P15A	2C #12AWG CU + #14AWG BOND	21mm	MMP	PANEL A1	INTERLOCKED WITH EXISTING UNIT HEATERS

MOTOR CONTROL LEGEND :
LRD - LOAD RATED DISCONNECT
MAG - MAGNETIC STARTER
CMS - MAGNETIC STARTER WITH DISCONNECT
MMP - MANUAL MOTOR PROTECTION
VFD - VARIABLE FREQUENCY DRIVE
MCC - MOTOR CONTROL CENTRE
LR - WITH LOAD RATED RELAY
RHOA - WITH HAND-OFF-AUTO SWITCH
K - KEYS
PL - PILOT LIGHT
SS - SOFT STARTER

MECHANICAL EQUIPMENT SCHEDULE NOTES:
1. MOTOR SCHEDULE IS FOR ESTIMATING PURPOSES ONLY. CONFIRM ALL MOTOR FULL LOAD CURRENTS WITH NAMEPLATES AND SIZE MOTOR DISCONNECTS, BREAKERS, FUSES AND OVERLOADS ACCORDINGLY.
2. CONFIRM MECHANICAL EQUIPMENT LOCATIONS WITH MECHANICAL DIVISION PRIOR TO ROUGH IN.
3. COORDINATE LOCATIONS OF ALL LINE VOLTAGE PILOT DEVICES WITH MECHANICAL DIVISION AND PROVIDE CONDUIT AND WIRING AS NECESSARY.
4. IN ADDITION TO THE STARTER/CONTROLS IDENTIFIED ABOVE, PROVIDE LOAD RATED DISCONNECT WHERE REQUIRED BY CEC EVEN IF NOT EXPLICITLY SHOWN.

ALL DRAWINGS AND SPECIFICATIONS ARE PROPERTY OF BAR ENGINEERING CO. LTD. AND SHALL NOT BE USED WITHOUT PRIOR WRITTEN CONSENT.
THE CONTRACTOR SHALL VERIFY ALL DIMENSIONS, DATUMS, AND DETAILED INFORMATION SHOWN ARE CORRECT PRIOR TO COMMENCING CONSTRUCTION AND SHALL REPORT ANY DISCREPANCIES PROMPTLY TO BAR ENGINEERING PRIOR TO COMMENCEMENT OF WORK.
DO NOT SCALE THE DRAWING UNLESS PRINTED OUT ON 24"x36" (610mmx915mm) ARCH D SHEET.
THIS DRAWING SHALL NOT BE USED FOR CONSTRUCTION PURPOSES UNTIL SIGNED FOR IFC.
SEAL:



PERMIT:

PERMIT TO PRACTICE
BAR ENGINEERING CO. LTD.
PERMIT NUMBER: 1001776
Engineers and Geoscientists BC
Member #45804 05 July 2024

0 AW JY - ISSUED FOR TENDER 2024/07/05
No. | BY | [ENG] APR | DESCRIPTION | DATE
PROJECT:

**CITY OF SALMON
ARM - FIRE HALL #2
BUILDING**

LOCATION:

SALMON ARM, B.C.

DRAWING NAME:

SCHEDULES

PROJECT NO.:

24VR-596400

DRAWING NO.:

E2.0

