

WATER CONSERVATION GUIDE

MULTI-STAGE WATER RESTRICTIONS

www.salmonarm.ca/water-restrictions

To ensure sufficient water supply for essential needs during summer months and drought conditions, the City of Salmon Arm has implemented multi-stage water restrictions for outdoor water use. These restrictions apply to **ALL properties** in Salmon Arm that use City water - residential, commercial, industrial and institutional.

Stage 1 is in effect year-round. Restrictions will be increased to Stages 2, 3 and 4 depending on environmental conditions, water supply system capacity and demand on the system. Notification of stage changes will be made via sign boards, newspaper, radio, social media and the City's website. Visit the water restrictions web page above for more information.

The restrictions allow outdoor water use on designated days of the week based on the last two digits of your street address and the current restriction stage, per the table below:

Last two digits of street address	Stage 1 (3 days/week)	Stage 2 (2 days/week)	Stage 3 (1 day/week)	Stage 4 (Not permitted)
Group A (00 - 33)	Sun, Tue, Fri	Tue, Fri	Tue	-
Group B (34 - 66)	Mon, Wed, Sat	Wed, Sat	Sat	-
Group C (67 - 99)	Sun, Tue, Thu	Sun, Thu	Thu	-

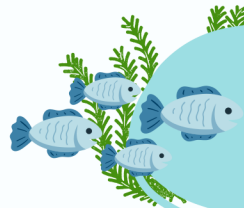
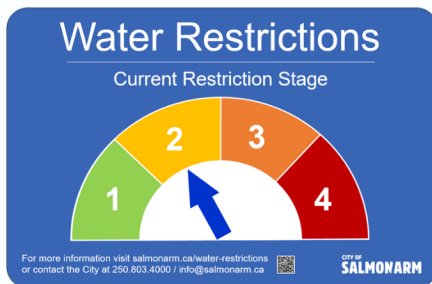
NOTE: Stratas and mobile home parks (MHP) should use the **street address**, NOT the unit address (i.e. the entire strata or MHP will share watering days).

Irrigation is allowed for a **MAXIMUM of 2 hours** on designated days, with the following conditions:

- Irrigation is **NOT permitted** between **11:00 AM and 7:00 PM** to minimize water loss by evaporation
- The **preferred time** for automatic irrigation systems is **12:00 AM (midnight) to 7:00 AM**, when demand is lower
- Properties are **not permitted** to irrigate over a **1/2 acre** (0.2 hectares) of land with City water

Refer to the **Water Usage Restrictions** sheet on the Water Restrictions web page noted above for more detailed information.

Watch for these water restriction signs posted around the City



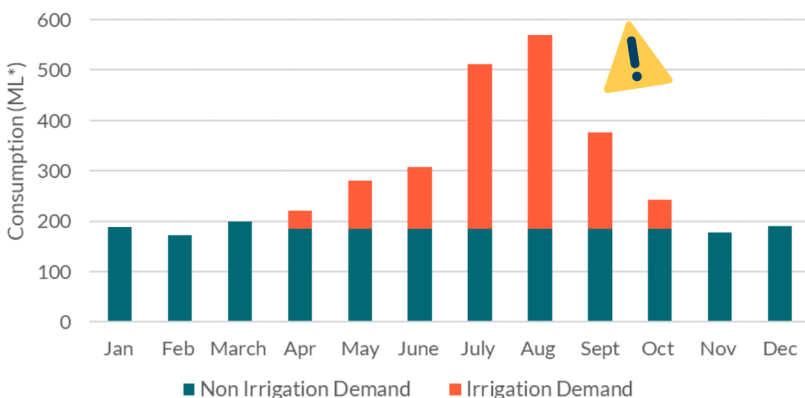
Shuswap lake has recently reached historic low levels, threatening local and regional ecosystems. Conserving water helps preserve essential habitat for fish and other wildlife.

Lake level data can be viewed at: www.salmonarm.ca/Lake-Level

Get a text or email alert when the stage changes! Click [Notify Me](#) on the water restrictions webpage.

HOW ARE WE USING WATER?

Average Monthly Water Demand



In the summer months, water demand increases dramatically due to outdoor water use, especially lawn irrigation. On an individual day, water consumption can increase by **upwards of 4x** the non-irrigation demand, nearing plant treatment capacity!

Without interventions such as water restrictions, the water supply system may not be able to ensure water is available for essential purposes. Pumps would need to work overtime, straining the system, and reservoirs would be at risk of reaching critically low levels.

*ML = Megalitre (1 million litres)

OUR WATER SUPPLY SYSTEM



Lake water is pumped into the treatment plant through an intake pipe at Canoe Beach. The plant can treat a maximum of 32 ML/day. Our summer record of 27.6 ML/day neared the limit!

The treatment plant removes all bacteria, viruses, parasites and particulates from the water supply.



Eight pump stations located throughout the city pump the water through trunk water mains and into the City's fourteen reservoirs.

From the reservoirs, water is distributed to the community. They are what allow us to have on-demand clean water.



It is important to always have enough water in the reservoirs to fulfill the community's essential water needs.

So, there is a lot more to supplying potable water than the amount in the lake. Each step in the water supply process has limitations, stressing the need for water conservation.

WHY SHOULD WE CARE?

1 Safety



Sufficient reservoir levels ensure water is available to the community for essential purposes, such as:

- Safe and reliable drinking water
- Services that rely on water including:
 - Fire fighting
 - Food production
 - Health care



2 Cost



The system is designed to operate in a work-rest cycle. Reservoirs deplete during the day and the pumps refill them at night. When water demands are high, the system gets little rest and becomes strained, requiring more frequent maintenance and repair or expansions and upgrades. Practicing water conservation techniques will minimize utility costs.

Water Conservation Tips



- ✓ Collect rainwater and snowmelt in barrels or cisterns for watering plants and gardens
- ✓ Lawns only need a maximum of 1.5" of water per week. To help monitor irrigation:
 - Pick up a rain gauge from City Hall
 - Install a rain sensor on your irrigation system
- ✓ Fix leaking toilets, faucets & irrigation systems
- ✓ Install low-flow faucets and shower heads



For more water conservation tips, visit www.salmonarm.ca/waterconservation

Why don't we expand our system to meet our maximum demands?

Municipal water infrastructure is expensive and can take years to allocate funds for an expansion.

Operations and maintenance cost **\$2,500,000*** yearly



Each pump station costs **\$1,600,000***



Reservoirs cost **\$1,500,000***



*on average

Not only is water treated before it enters your home, but it must also be treated again in the sewage treatment plant before being released back into the lake. The cycle of initial treatment, pumping, and sewage treatment involves a lot of infrastructure and is very energy intensive.



Next time you turn on the tap, think about where that water comes from and the costs involved to get it to your home. Considering the **severe drought conditions** in BC, it is a precious resource that must be used mindfully.

Questions or comments?

Contact the City at 250.803.4000 or email info@salmonarm.ca