

Legend

Enhancement Point

- Existing Riparian
- Potential Riparian

Culvert

- Culvert
- Culvert with Barrier

Generic Point

- Bridge
- Fence
- Garbage/Pollution
- Livestock/Livestock Crossing
- Other

Obstruction Point

- Beaver Dam
- Cascade
- Dam
- Falls
- Fences
- Log Jam
- Persistent Debris
- Pump
- Velocity Barrier

Discharge Point

- Agricultural Runoff
- House Effluent
- Other
- Storm Drain
- Tile Drain
- Trench

Top of Bank

- Top of Bank
- Segment Break



Coordinate System: NAD 1983 UTM Zone 11N Transverse Mercator

City of Salmon Arm

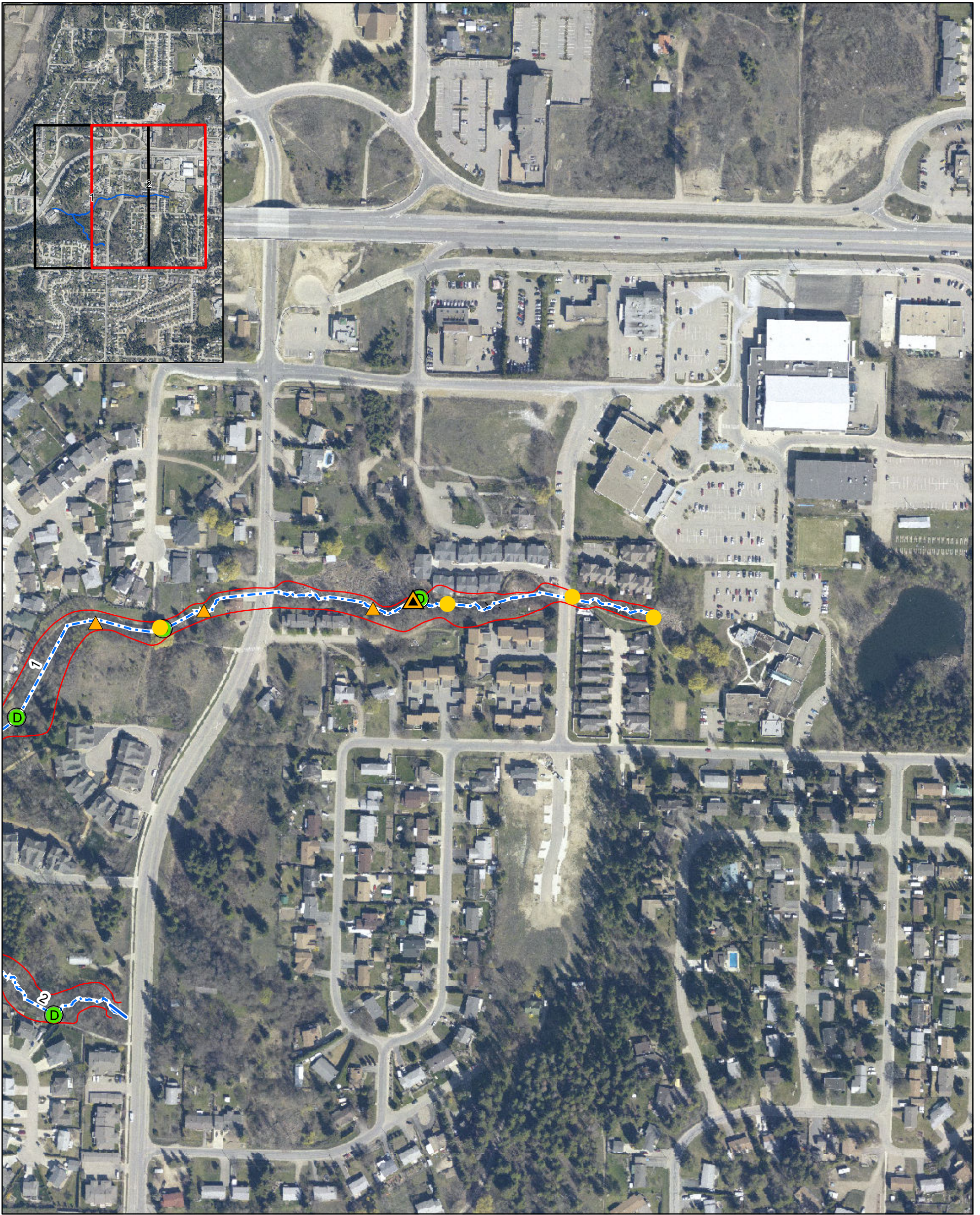
Sensitive Habitat Inventory Mapping and Wetland Inventory Mapping Project Section Map

Turner Tile 1 of 2



Date: 10/17/2012
Revision Number: FINAL
Prepared by: ADucharme





Legend		
Enhancement Point	Obstruction Point	Discharge Point
● Existing Riparian	● Beaver Dam	✱ Agricultural Runoff
● Potential Riparian	☞ Cascade	⊗ House Effluent
Culvert	☞ Dam	● Other
● Culvert	☞ Falls	Ⓧ Storm Drain
● Culvert with Barrier	☞ Fences	⬢ Tile Drain
Generic Point	☞ Log Jam	■ Trench
≡ Bridge	☞ Persistent Debris	Top of Bank
☞☞☞ Fence	☞ Pump	— Top of Bank
▲ Garbage/Pollution	☉ Velocity Barrier	- - - Segment Break
◆ Livestock/Livestock Crossing		
▲ Other		

City of Salmon Arm

Sensitive Habitat Inventory Mapping and Wetland Inventory Mapping Project

Section Map

Turner Tile 2 of 2

1:3,000

0 25 50 100 150 Meters

Coordinate System: NAD 1983 UTM Zone 11N Transverse Mercator

N

Date: 10/17/2012

Revision Number: FINAL

Prepared by: ADucharme

FORSITE
Forest Management Specialists