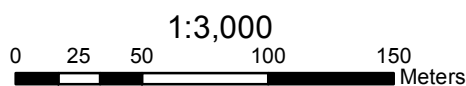


Legend		
<b>Enhancement Point</b>	<b>Obstruction Point</b>	<b>Discharge Point</b>
● Existing Riparian	● Beaver Dam	✱ Agricultural Runoff
● Potential Riparian	☒ Cascade	⊗ House Effluent
<b>Culvert</b>	☒ Dam	● Other
● Culvert	☒ Falls	Ⓧ Storm Drain
● Culvert with Barrier	☒ Fences	⬢ Tile Drain
<b>Generic Point</b>	☒ Log Jam	■ Trench
☒ Bridge	☒ Persistent Debris	<b>Top of Bank</b>
☒ Fence	☒ Pump	— Top of Bank
▲ Garbage/Pollution	☒ Velocity Barrier	- - - Segment Break
▲ Livestock/Livestock Crossing		
▲ Other		



Coordinate System: NAD 1983 UTM Zone 11N Transverse Mercator

# City of Salmon Arm

## Sensitive Habitat Inventory Mapping and Wetland Inventory Mapping Project

### Section Map

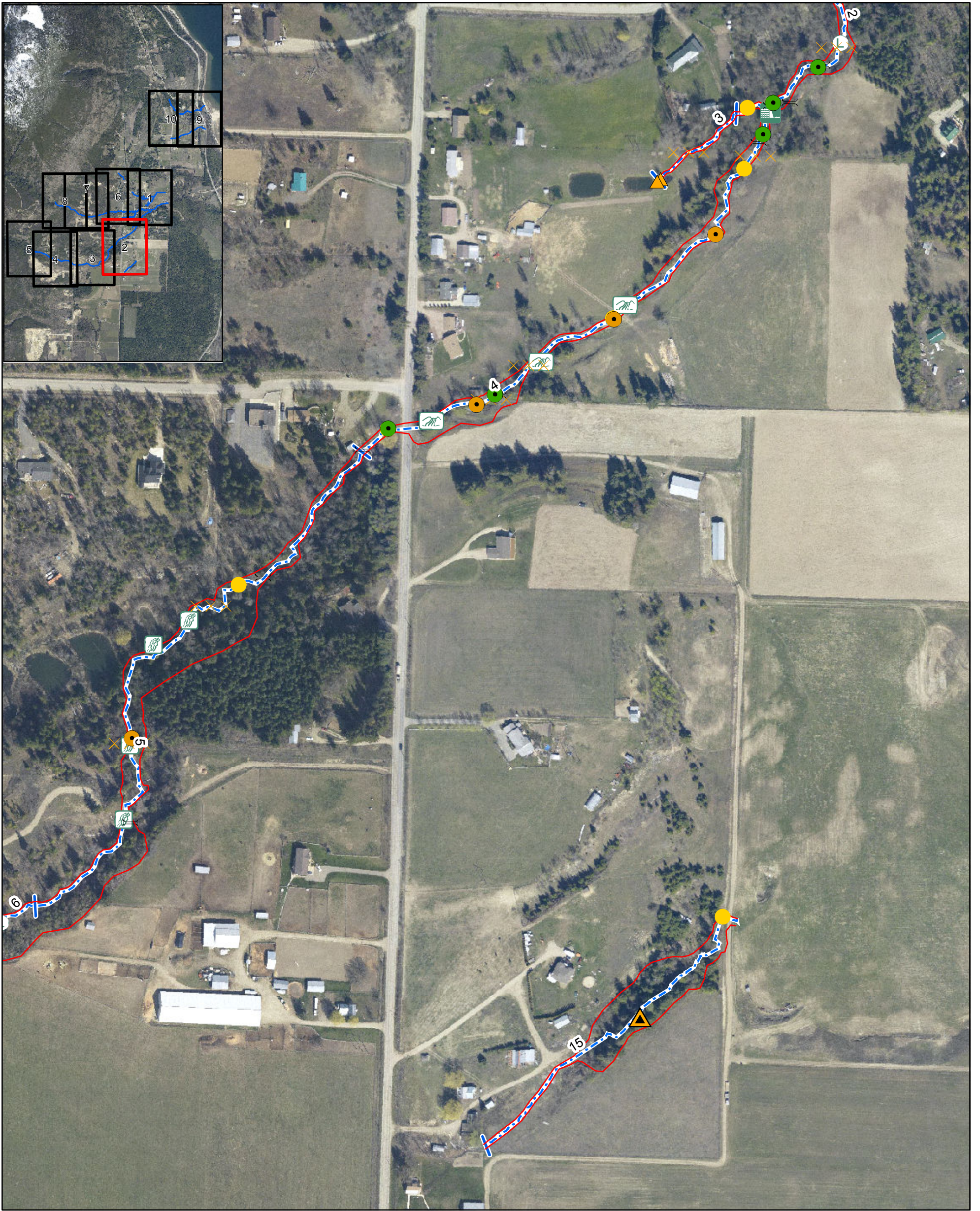
Syphon Tile 1 of 10



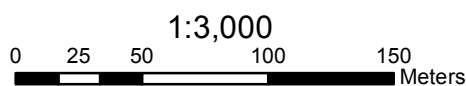
Date: 10/17/2012  
Revision Number: FINAL  
Prepared by: ADucharme







Legend		
<b>Enhancement Point</b>	<b>Obstruction Point</b>	<b>Discharge Point</b>
● Existing Riparian	● Beaver Dam	✱ Agricultural Runoff
● Potential Riparian	☞ Cascade	⊗ House Effluent
<b>Culvert</b>	☞ Dam	● Other
● Culvert	☞ Falls	Ⓧ Storm Drain
● Culvert with Barrier	☞ Fences	☞ Tile Drain
<b>Generic Point</b>	☞ Log Jam	■ Trench
☐ Bridge	☞ Persistent Debris	<b>Top of Bank</b>
☞☞☞ Fence	☐ Pump	— Top of Bank
▲ Garbage/Pollution	☐ Velocity Barrier	- - - Segment Break
▲ Livestock/Livestock Crossing		
▲ Other		



# City of Salmon Arm

## Sensitive Habitat Inventory Mapping and Wetland Inventory Mapping Project

### Section Map

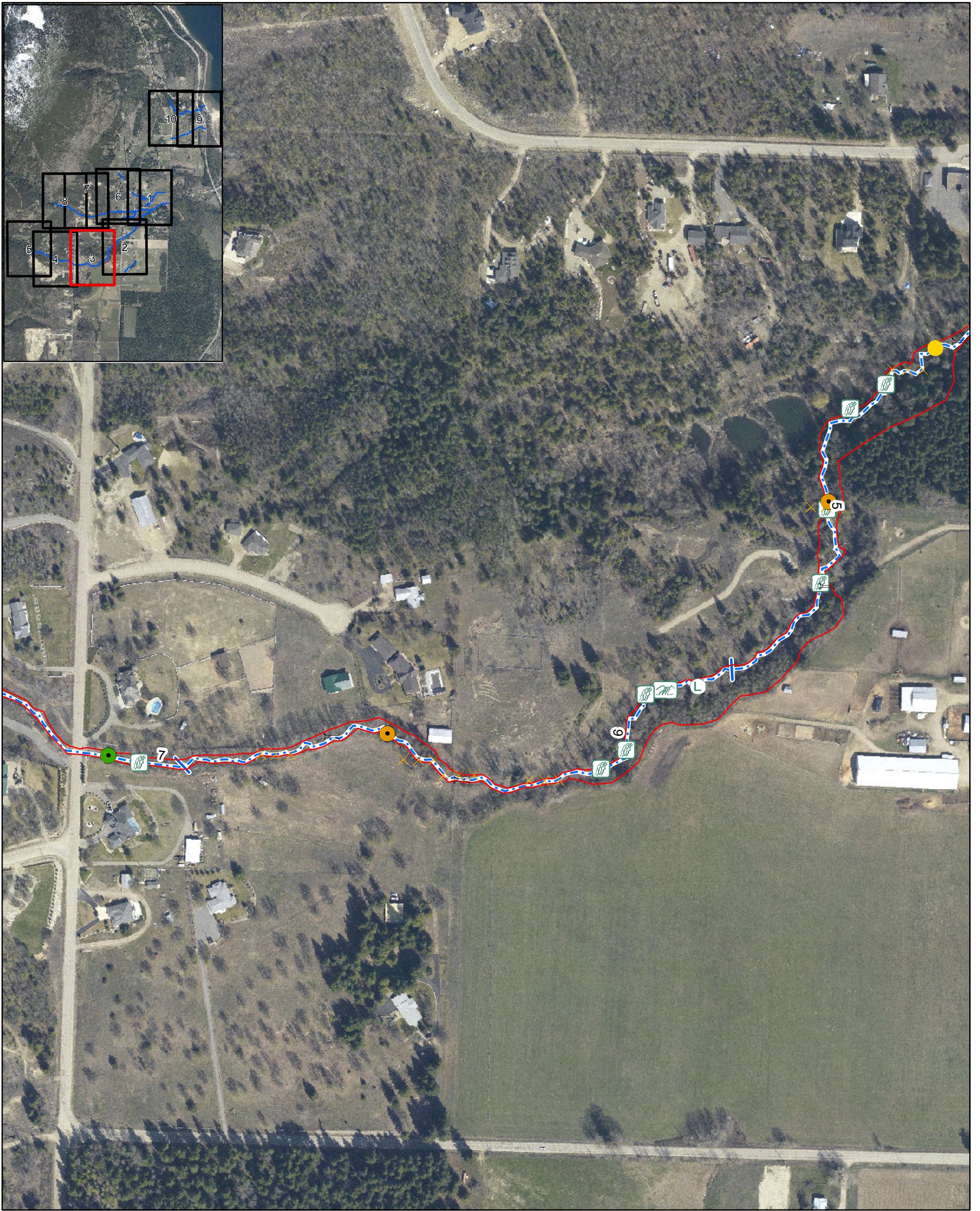
Syphon Tile 2 of 10



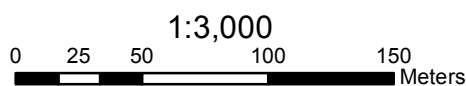
Date: 10/17/2012  
Revision Number: FINAL  
Prepared by: ADucharme







Legend		
<b>Enhancement Point</b>	<b>Obstruction Point</b>	<b>Discharge Point</b>
● Existing Riparian	● Beaver Dam	✱ Agricultural Runoff
● Potential Riparian	☞ Cascade	⊗ House Effluent
<b>Culvert</b>	☞ Dam	● Other
● Culvert	☞ Falls	⊖ Storm Drain
● Culvert with Barrier	☞ Fences	⬢ Tile Drain
<b>Generic Point</b>	☞ Log Jam	■ Trench
≡ Bridge	☞ Persistent Debris	<b>Top of Bank</b>
☞☞☞ Fence	☞ Pump	— Top of Bank
▲ Garbage/Pollution	☞ Velocity Barrier	- - - Segment Break
▲ Livestock/Livestock Crossing		
▲ Other		



Coordinate System: NAD 1983 UTM Zone 11N Transverse Mercator

# City of Salmon Arm

## Sensitive Habitat Inventory Mapping and Wetland Inventory Mapping Project

### Section Map

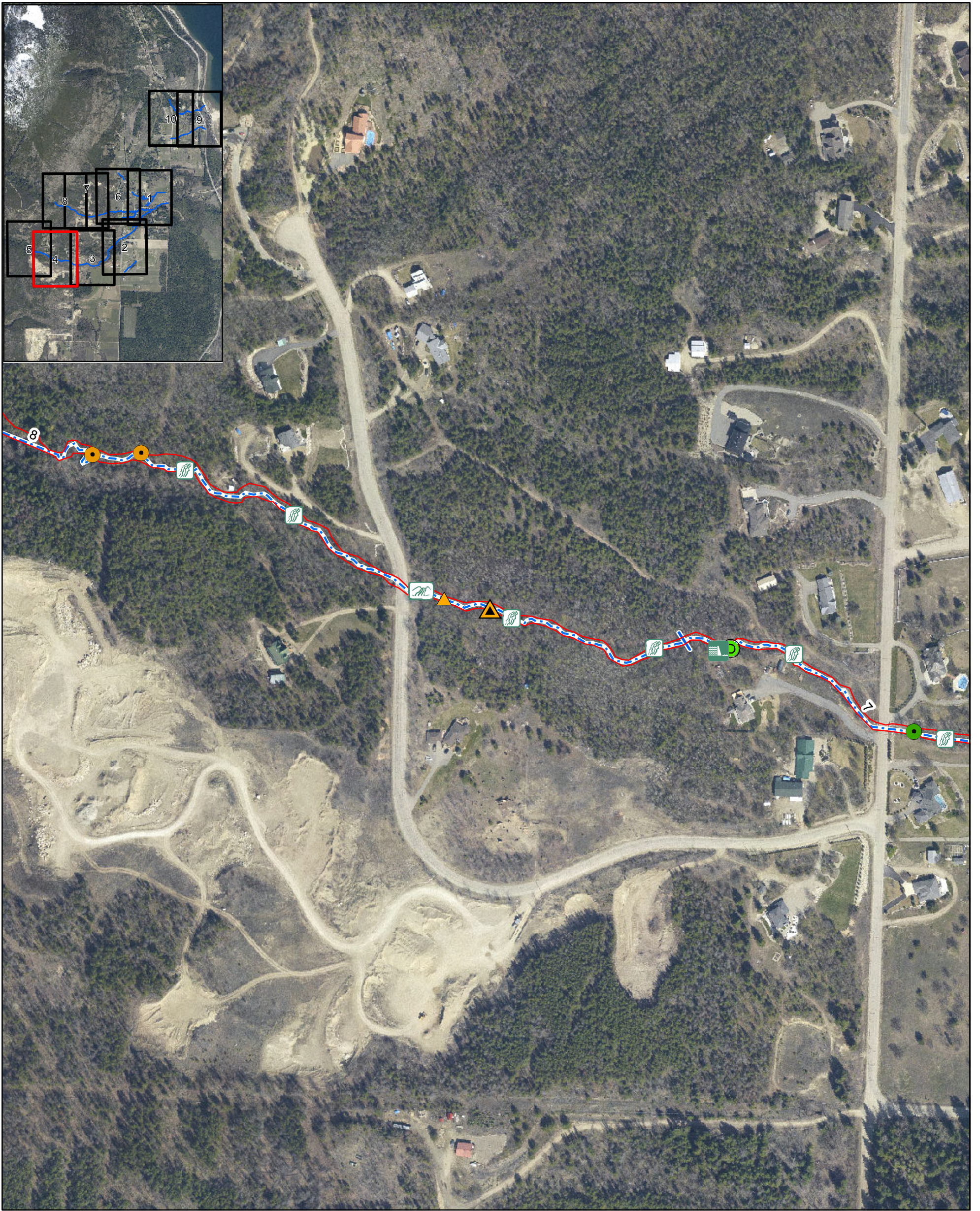
Syphon Tile 3 of 10



Date: 10/17/2012  
Revision Number: FINAL  
Prepared by: ADucharme







**Legend**

<p><b>Enhancement Point</b></p> <ul style="list-style-type: none"> <li><span style="color: green;">●</span> Existing Riparian</li> <li><span style="color: orange;">●</span> Potential Riparian</li> </ul> <p><b>Culvert</b></p> <ul style="list-style-type: none"> <li><span style="color: yellow;">●</span> Culvert</li> <li><span style="color: red;">●</span> Culvert with Barrier</li> </ul> <p><b>Generic Point</b></p> <ul style="list-style-type: none"> <li> Bridge</li> <li> Fence</li> <li> Garbage/Pollution</li> <li> Livestock/Livestock Crossing</li> <li> Other</li> </ul>	<p><b>Obstruction Point</b></p> <ul style="list-style-type: none"> <li> Beaver Dam</li> <li> Cascade</li> <li> Dam</li> <li> Falls</li> <li> Fences</li> <li> Log Jam</li> <li> Persistant Debris</li> <li> Pump</li> <li> Velocity Barrier</li> </ul>	<p><b>Discharge Point</b></p> <ul style="list-style-type: none"> <li> Agricultural Runoff</li> <li> House Effluent</li> <li> Other</li> <li> Storm Drain</li> <li> Tile Drain</li> <li> Trench</li> </ul> <p><b>Top of Bank</b></p> <ul style="list-style-type: none"> <li><span style="color: red;">—</span> Top of Bank</li> <li><span style="color: blue;">- - -</span> Segment Break</li> </ul>
--	--	---

1:3,000

0 25 50 100 150 Meters

Coordinate System: NAD 1983 UTM Zone 11N Transverse Mercator

## City of Salmon Arm

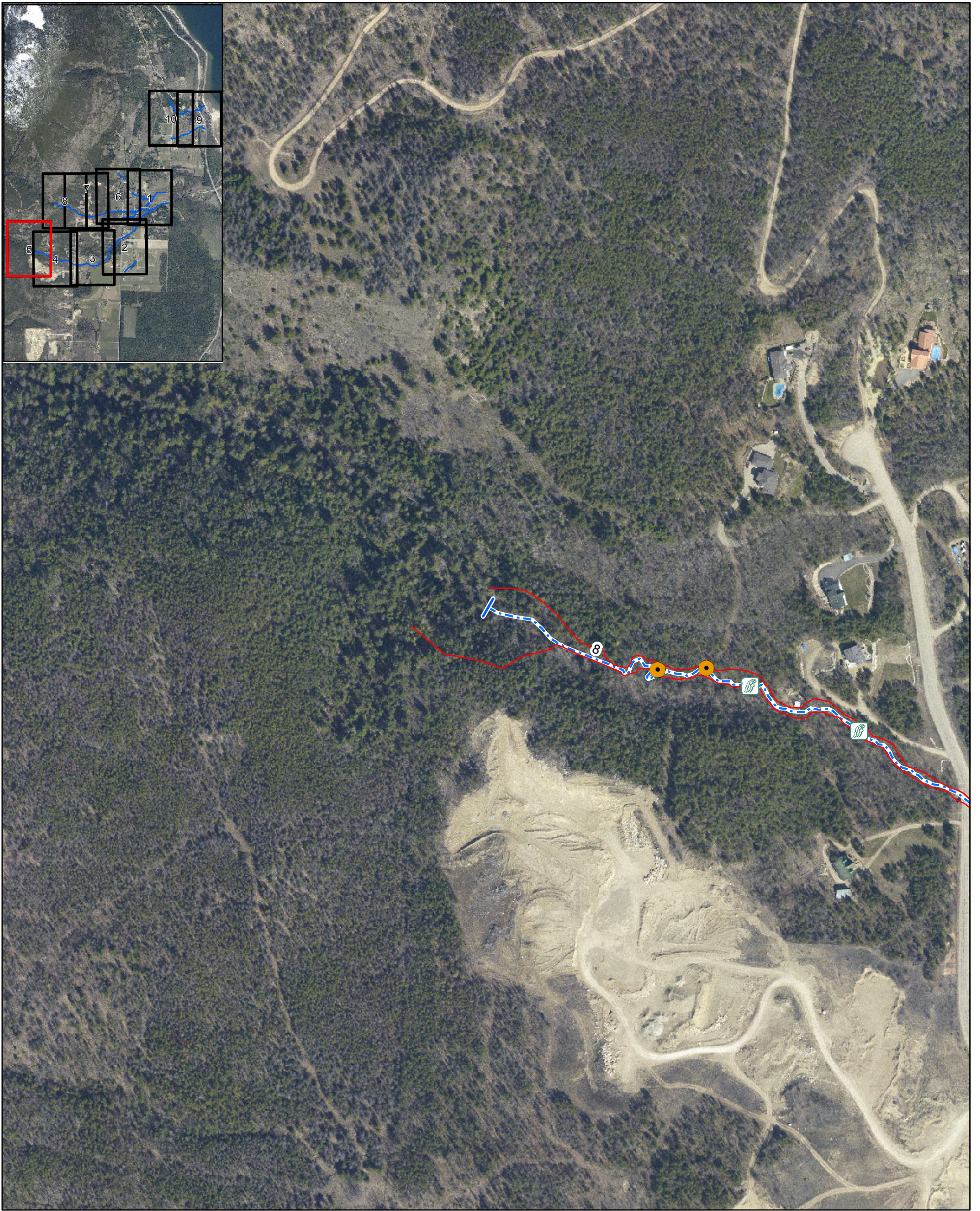
### Sensitive Habitat Inventory Mapping and Wetland Inventory Mapping Project

#### Section Map

Syphon Tile 4 of 10

Date: 10/17/2012  
Revision Number: FINAL  
Prepared by: ADucharme





**Legend**

<b>Enhancement Point</b>	<b>Obstruction Point</b>	<b>Discharge Point</b>
● Existing Riparian	● Beaver Dam	✱ Agricultural Runoff
● Potential Riparian	☞ Cascade	⊗ House Effluent
<b>Culvert</b>	☞ Dam	● Other
● Culvert	☞ Falls	Ⓧ Storm Drain
● Culvert with Barrier	☞ Fences	⬢ Tile Drain
<b>Generic Point</b>	☞ Log Jam	■ Trench
☞ Bridge	☞ Persistent Debris	<b>Top of Bank</b>
☞ Fence	☞ Pump	— Top of Bank
▲ Garbage/Pollution	☞ Velocity Barrier	- - - Segment Break
▲ Livestock/Livestock Crossing		
▲ Other		

1:3,000  
0 25 50 100 150 Meters

Coordinate System: NAD 1983 UTM Zone 11N Transverse Mercator

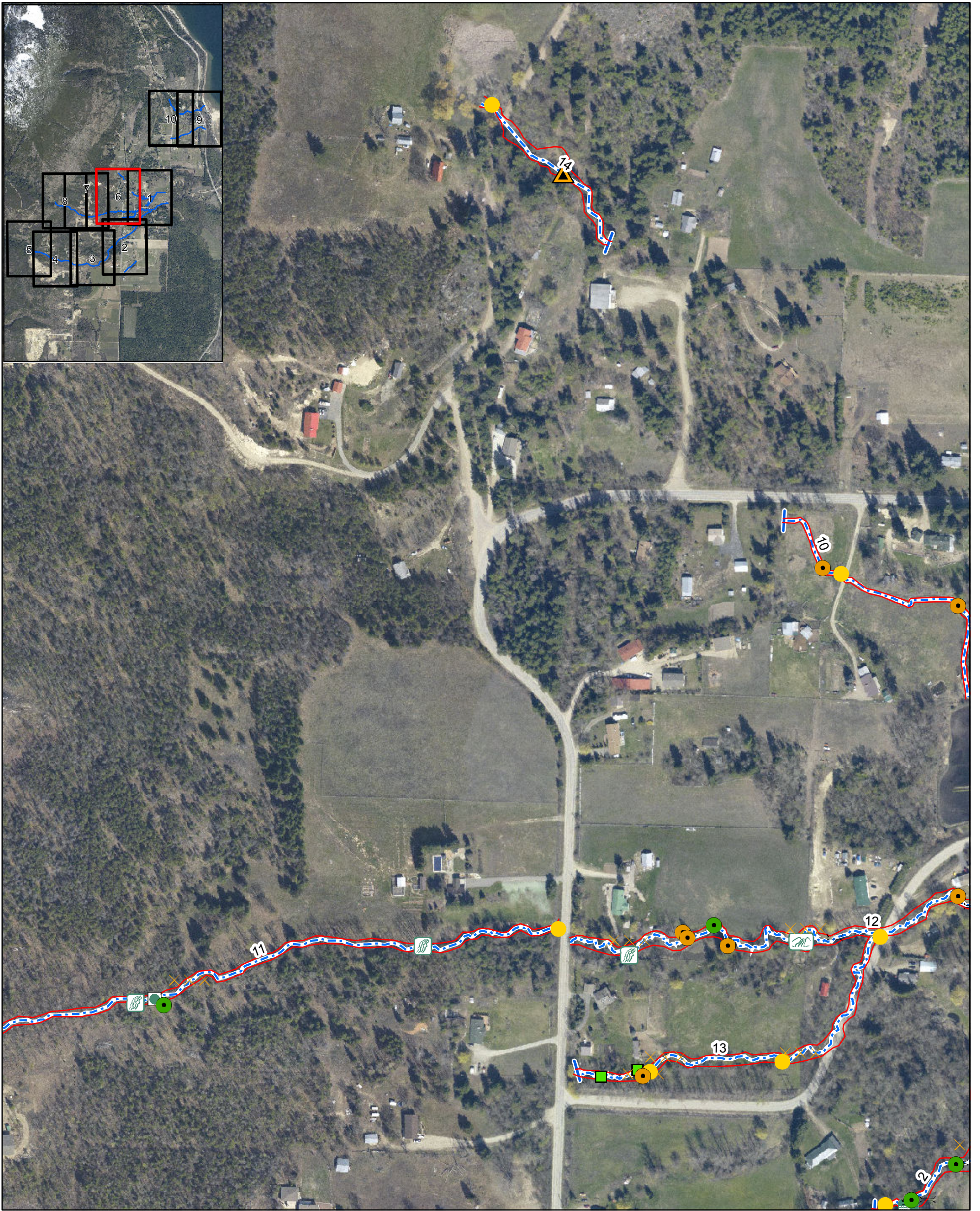
## City of Salmon Arm

### Sensitive Habitat Inventory Mapping and Wetland Inventory Mapping Project Section Map

Syphon Tile 5 of 10

Date: 10/17/2012  
Revision Number: FINAL  
Prepared by: ADucharme





**Legend**

<p><b>Enhancement Point</b></p> <ul style="list-style-type: none"> <li><span style="color: green;">●</span> Existing Riparian</li> <li><span style="color: orange;">●</span> Potential Riparian</li> </ul> <p><b>Culvert</b></p> <ul style="list-style-type: none"> <li><span style="color: yellow;">●</span> Culvert</li> <li><span style="color: red;">●</span> Culvert with Barrier</li> </ul> <p><b>Generic Point</b></p> <ul style="list-style-type: none"> <li> Bridge</li> <li> Fence</li> <li> Garbage/Pollution</li> <li> Livestock/Livestock Crossing</li> <li> Other</li> </ul>	<p><b>Obstruction Point</b></p> <ul style="list-style-type: none"> <li> Beaver Dam</li> <li> Cascade</li> <li> Dam</li> <li> Falls</li> <li> Fences</li> <li> Log Jam</li> <li> Persistant Debris</li> <li> Pump</li> <li> Velocity Barrier</li> </ul>	<p><b>Discharge Point</b></p> <ul style="list-style-type: none"> <li> Agricultural Runoff</li> <li> House Effluent</li> <li> Other</li> <li> Storm Drain</li> <li> Tile Drain</li> <li> Trench</li> </ul> <p><b>Top of Bank</b></p> <ul style="list-style-type: none"> <li> Top of Bank</li> <li> Segment Break</li> </ul>
--	--	--

1:3,000

0 25 50 100 150 Meters

Coordinate System: NAD 1983 UTM Zone 11N Transverse Mercator

## City of Salmon Arm

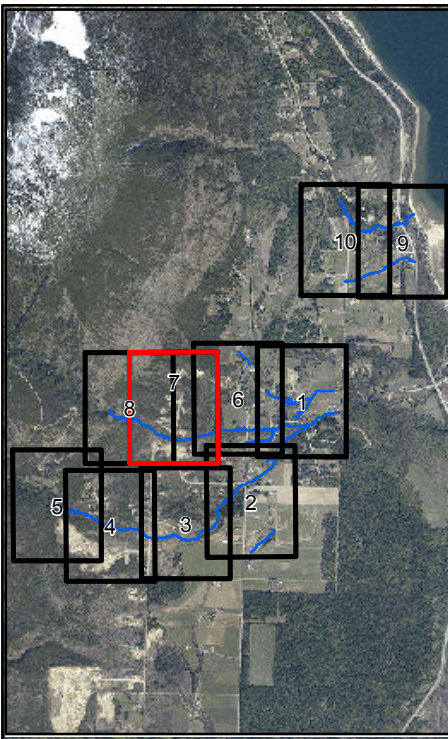
### Sensitive Habitat Inventory Mapping and Wetland Inventory Mapping Project

#### Section Map

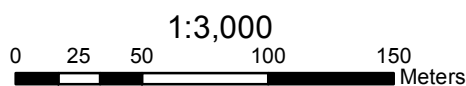
Syphon Tile 6 of 10

Date: 10/17/2012  
Revision Number: FINAL  
Prepared by: ADucharme





Legend		
<b>Enhancement Point</b>	<b>Obstruction Point</b>	<b>Discharge Point</b>
● Existing Riparian	● Beaver Dam	✱ Agricultural Runoff
● Potential Riparian	☞ Cascade	⊗ House Effluent
<b>Culvert</b>	☞ Dam	● Other
● Culvert	☞ Falls	Ⓧ Storm Drain
● Culvert with Barrier	☞ Fences	☞ Tile Drain
<b>Generic Point</b>	☞ Log Jam	■ Trench
☞ Bridge	☞ Persistent Debris	<b>Top of Bank</b>
☞ Fence	☞ Pump	— Top of Bank
▲ Garbage/Pollution	☞ Velocity Barrier	- - - Segment Break
▲ Livestock/Livestock Crossing		
▲ Other		



Coordinate System: NAD 1983 UTM Zone 11N Transverse Mercator

# City of Salmon Arm

## Sensitive Habitat Inventory Mapping and Wetland Inventory Mapping Project

### Section Map

Syphon Tile 7 of 10



Date: 10/17/2012  
Revision Number: FINAL



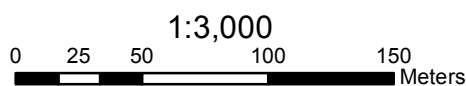
Prepared by: ADucharme







Legend		
<b>Enhancement Point</b>	<b>Obstruction Point</b>	<b>Discharge Point</b>
● Existing Riparian	● Beaver Dam	✱ Agricultural Runoff
● Potential Riparian	☞ Cascade	⊗ House Effluent
<b>Culvert</b>	☞ Dam	● Other
● Culvert	☞ Falls	Ⓧ Storm Drain
● Culvert with Barrier	☞ Fences	⬢ Tile Drain
<b>Generic Point</b>	☞ Log Jam	■ Trench
≡ Bridge	☞ Persistent Debris	<b>Top of Bank</b>
☞☞☞ Fence	☞ Pump	— Top of Bank
▲ Garbage/Pollution	☞ Velocity Barrier	- - - Segment Break
▲ Livestock/Livestock Crossing		
▲ Other		



Coordinate System: NAD 1983 UTM Zone 11N Transverse Mercator

# City of Salmon Arm

## Sensitive Habitat Inventory Mapping and Wetland Inventory Mapping Project

### Section Map

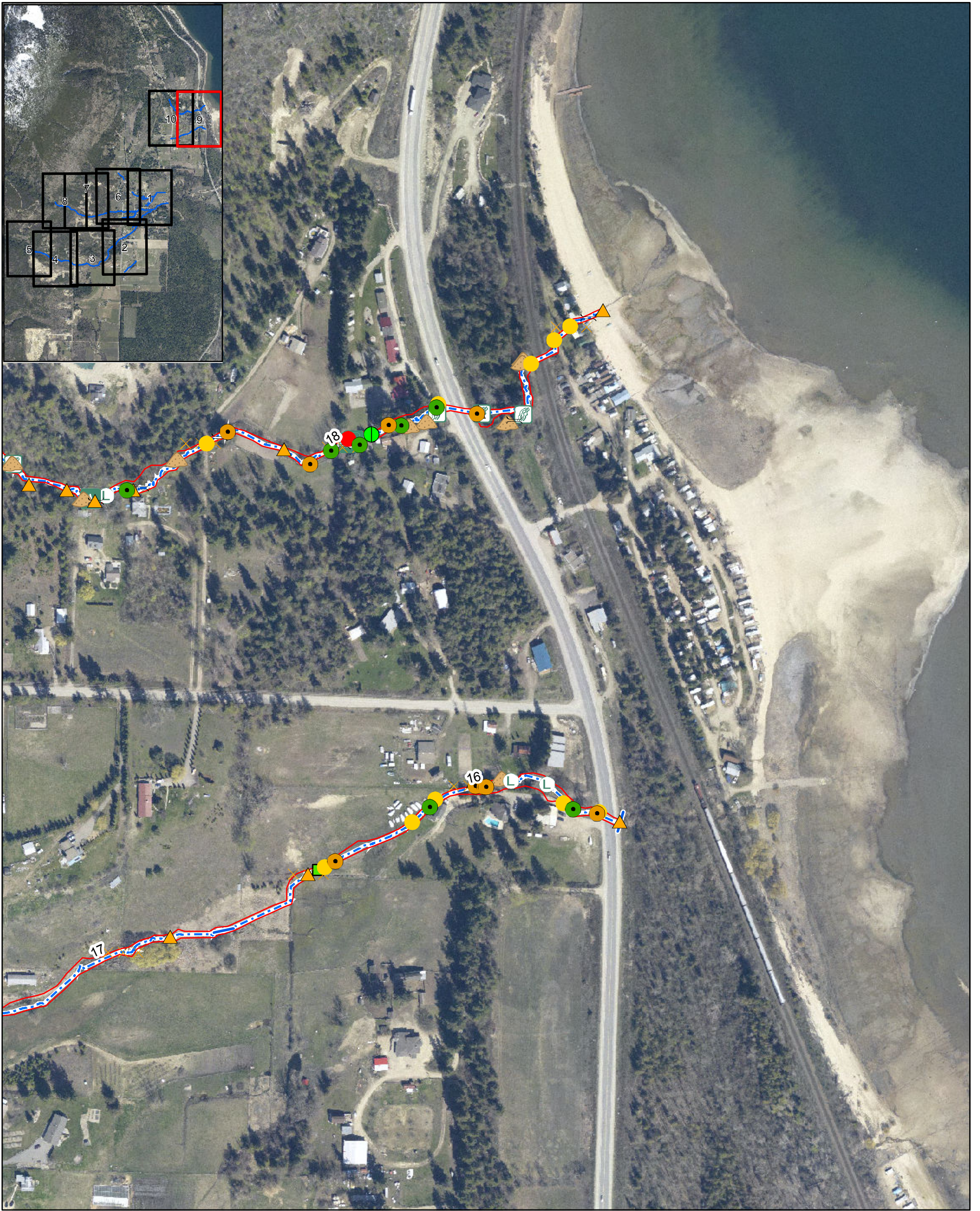
Syphon Tile 8 of 10



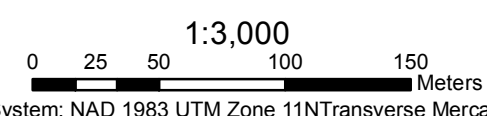
Date: 10/17/2012  
 Revision Number: FINAL  
 Prepared by: ADucharme







Legend		
<b>Enhancement Point</b>	<b>Obstruction Point</b>	<b>Discharge Point</b>
● Existing Riparian	● Beaver Dam	✱ Agricultural Runoff
● Potential Riparian	☞ Cascade	⊗ House Effluent
<b>Culvert</b>	☞ Dam	● Other
● Culvert	☞ Falls	Ⓧ Storm Drain
● Culvert with Barrier	☞ Fences	⬢ Tile Drain
<b>Generic Point</b>	☞ Log Jam	■ Trench
☞ Bridge	☞ Persistent Debris	<b>Top of Bank</b>
☞ Fence	☞ Pump	— Top of Bank
▲ Garbage/Pollution	☞ Velocity Barrier	- - - Segment Break
▲ Livestock/Livestock Crossing		
▲ Other		



## City of Salmon Arm

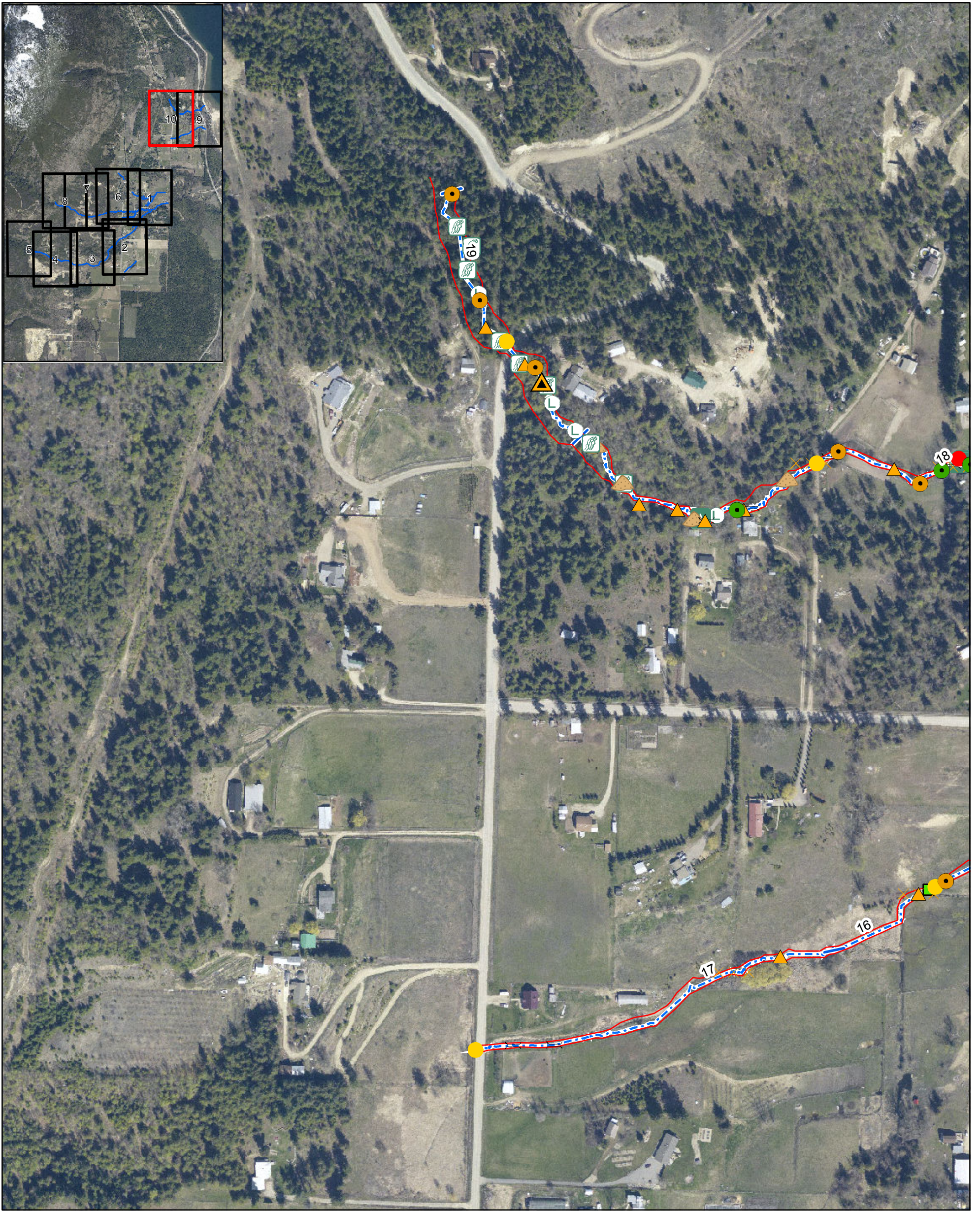
### Sensitive Habitat Inventory Mapping and Wetland Inventory Mapping Project

#### Section Map

Syphon Tile 9 of 10

Date: 10/17/2012  
Revision Number: FINAL  
Prepared by: ADucharme





**Legend**

<p><b>Enhancement Point</b></p> <ul style="list-style-type: none"> <li><span style="color: green;">●</span> Existing Riparian</li> <li><span style="color: orange;">●</span> Potential Riparian</li> </ul> <p><b>Culvert</b></p> <ul style="list-style-type: none"> <li><span style="color: yellow;">●</span> Culvert</li> <li><span style="color: red;">●</span> Culvert with Barrier</li> </ul> <p><b>Generic Point</b></p> <ul style="list-style-type: none"> <li> Bridge</li> <li> Fence</li> <li> Garbage/Pollution</li> <li> Livestock/Livestock Crossing</li> <li> Other</li> </ul>	<p><b>Obstruction Point</b></p> <ul style="list-style-type: none"> <li> Beaver Dam</li> <li> Cascade</li> <li> Dam</li> <li> Falls</li> <li> Fences</li> <li> Log Jam</li> <li> Persistant Debris</li> <li> Pump</li> <li> Velocity Barrier</li> </ul>	<p><b>Discharge Point</b></p> <ul style="list-style-type: none"> <li> Agricultural Runoff</li> <li> House Effluent</li> <li> Other</li> <li> Storm Drain</li> <li> Tile Drain</li> <li> Trench</li> </ul> <p><b>Top of Bank</b></p> <ul style="list-style-type: none"> <li><span style="color: red;">—</span> Top of Bank</li> <li><span style="color: blue; border-bottom: 1px dashed blue;">—</span> Segment Break</li> </ul>
--	--	---

1:3,000

0 25 50 100 150 Meters

Coordinate System: NAD 1983 UTM Zone 11N Transverse Mercator

## City of Salmon Arm

### Sensitive Habitat Inventory Mapping and Wetland Inventory Mapping Project

#### Section Map

Syphon Tile 10 of 10

Date: 10/17/2012  
Revision Number: FINAL  
Prepared by: ADucharme