

**Legend**

**Enhancement Point**

- Existing Riparian
- Potential Riparian

**Culvert**

- Culvert
- Culvert with Barrier

**Generic Point**

- Bridge
- Fence
- Garbage/Pollution
- Livestock/Livestock Crossing
- Other

**Obstruction Point**

- Beaver Dam
- Cascade
- Dam
- Falls
- Fences
- Log Jam
- Persistant Debris
- Pump
- Velocity Barrier

**Discharge Point**

- Agricultural Runoff
- House Effluent
- Other
- Storm Drain
- Tile Drain
- Trench

**Top of Bank**

- Top of Bank
- Segment Break



Coordinate System: NAD 1983 UTM Zone 11N Transverse Mercator

# City of Salmon Arm

## Sensitive Habitat Inventory Mapping and Wetland Inventory Mapping Project Section Map

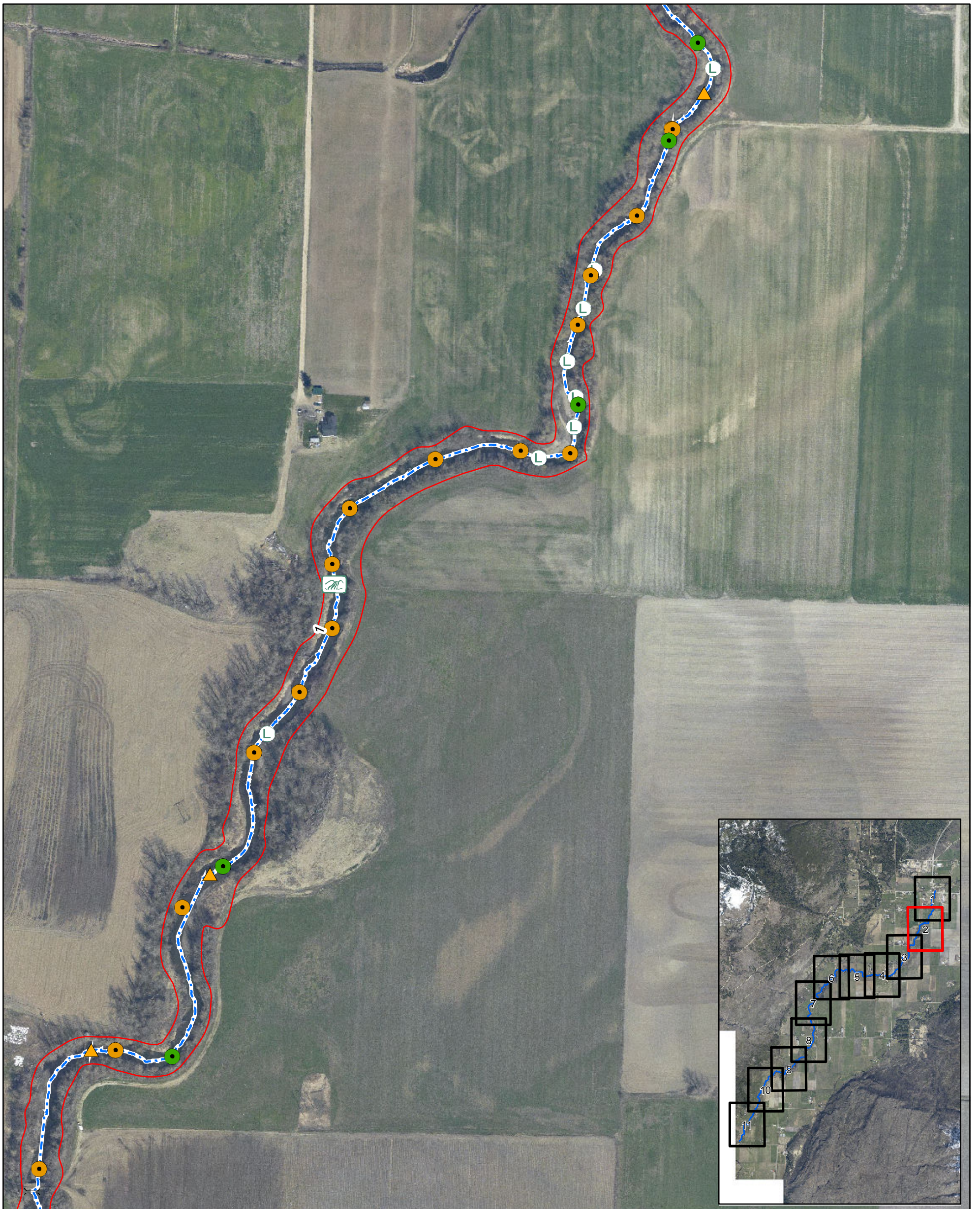
Salmon River Tile 1 of 11



Date: 10/17/2012  
Revision Number: FINAL

Prepared by: ADucharme





**Legend**

**Enhancement Point**

- Existing Riparian
- Potential Riparian

**Culvert**

- Culvert
- Culvert with Barrier

**Generic Point**

- Bridge
- Fence
- Garbage/Pollution
- Livestock/Livestock Crossing
- Other

**Obstruction Point**

- Beaver Dam
- Cascade
- Dam
- Falls
- Fences
- Log Jam
- Persistant Debris
- Pump
- Velocity Barrier

**Discharge Point**

- Agricultural Runoff
- House Effluent
- Other
- Storm Drain
- Tile Drain
- Trench

**Top of Bank**

- Top of Bank
- Segment Break



Coordinate System: NAD 1983 UTM Zone 11N Transverse Mercator

# City of Salmon Arm

## Sensitive Habitat Inventory Mapping and Wetland Inventory Mapping Project Section Map

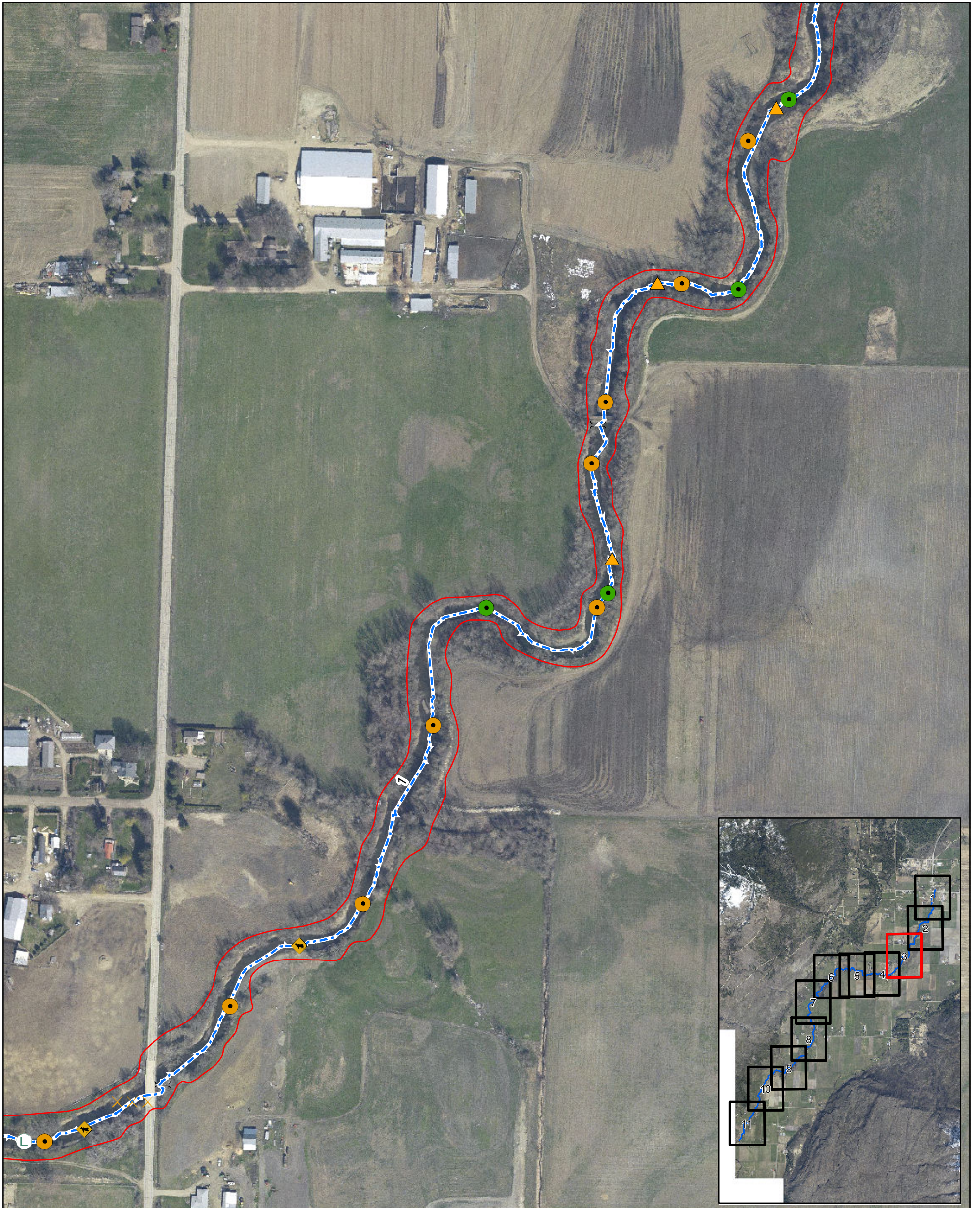
Salmon River Tile 2 of 11



Date: 10/17/2012  
Revision Number: FINAL

Prepared by: ADucharme





**Legend**

<p><b>Enhancement Point</b></p> <ul style="list-style-type: none"> <li><span style="color: green;">●</span> Existing Riparian</li> <li><span style="color: orange;">●</span> Potential Riparian</li> </ul> <p><b>Culvert</b></p> <ul style="list-style-type: none"> <li><span style="color: yellow;">●</span> Culvert</li> <li><span style="color: red;">●</span> Culvert with Barrier</li> </ul> <p><b>Generic Point</b></p> <ul style="list-style-type: none"> <li> Bridge</li> <li> Fence</li> <li> Garbage/Pollution</li> <li> Livestock/Livestock Crossing</li> <li> Other</li> </ul>	<p><b>Obstruction Point</b></p> <ul style="list-style-type: none"> <li> Beaver Dam</li> <li> Cascade</li> <li> Dam</li> <li> Falls</li> <li> Fences</li> <li> Log Jam</li> <li> Persistant Debris</li> <li> Pump</li> <li> Velocity Barrier</li> </ul>	<p><b>Discharge Point</b></p> <ul style="list-style-type: none"> <li> Agricultural Runoff</li> <li> House Effluent</li> <li> Other</li> <li> Storm Drain</li> <li> Tile Drain</li> <li> Trench</li> </ul> <p><b>Top of Bank</b></p> <ul style="list-style-type: none"> <li><span style="color: red;">—</span> Top of Bank</li> <li><span style="color: blue;">- - -</span> Segment Break</li> </ul>
--	--	---

1:3,000

0 25 50 100 150 Meters

Coordinate System: NAD 1983 UTM Zone 11N Transverse Mercator

## City of Salmon Arm

### Sensitive Habitat Inventory Mapping and Wetland Inventory Mapping Project Section Map

Salmon River Tile 3 of 11

Date: 10/17/2012  
Revision Number: FINAL  
Prepared by: ADucharme



**Legend**

**Enhancement Point**

- Existing Riparian
- Potential Riparian

**Culvert**

- Culvert
- Culvert with Barrier

**Generic Point**

- Bridge
- Fence
- Garbage/Pollution
- Livestock/Livestock Crossing
- Other

**Obstruction Point**

- Beaver Dam
- Cascade
- Dam
- Falls
- Fences
- Log Jam
- Persistant Debris
- Pump
- Velocity Barrier

**Discharge Point**

- Agricultural Runoff
- House Effluent
- Other
- Storm Drain
- Tile Drain
- Trench

**Top of Bank**

- Top of Bank
- Segment Break



Coordinate System: NAD 1983 UTM Zone 11N Transverse Mercator

# City of Salmon Arm

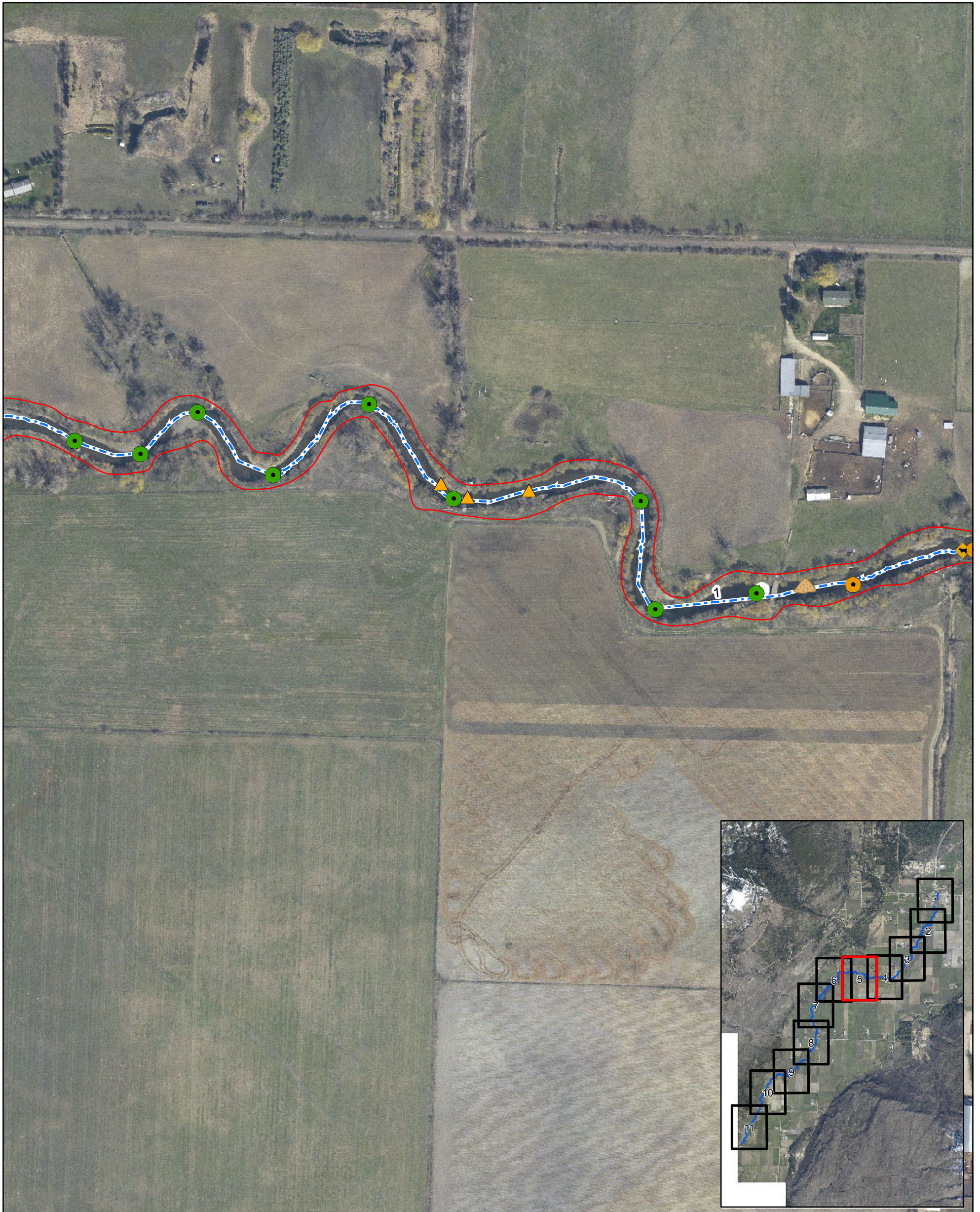
## Sensitive Habitat Inventory Mapping and Wetland Inventory Mapping Project Section Map

Salmon River Tile 4 of 11



Date: 10/17/2012  
 Revision Number: FINAL  
 Prepared by: ADucharme





**Legend**

**Enhancement Point**

- Existing Riparian
- Potential Riparian

**Culvert**

- Culvert
- Culvert with Barrier

**Generic Point**

- Bridge
- Fence
- Garbage/Pollution
- Livestock/Livestock Crossing
- Other

**Obstruction Point**

- Beaver Dam
- Cascade
- Dam
- Falls
- Fences
- Log Jam
- Persistent Debris
- Pump
- Velocity Barrier

**Discharge Point**

- Agricultural Runoff
- House Effluent
- Other
- Storm Drain
- Tile Drain
- Trench

**Top of Bank**

- Top of Bank
- Segment Break



Coordinate System: NAD 1983 UTM Zone 11N Transverse Mercator

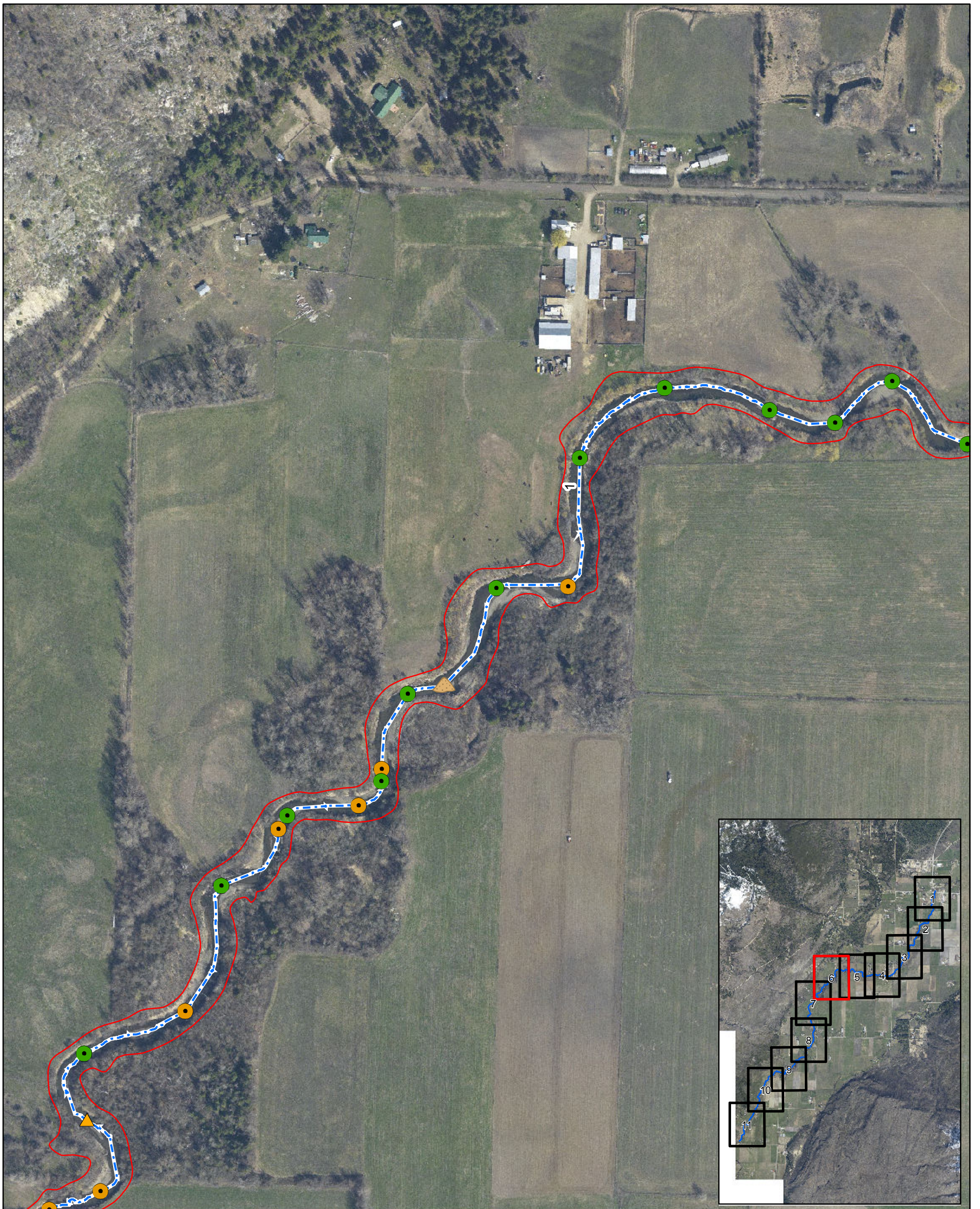
**City of Salmon Arm**  
 Sensitive Habitat Inventory Mapping  
 and  
 Wetland Inventory Mapping Project  
 Section Map

Salmon River Tile 5 of 11



Date: 10/17/2012  
 Revision Number: FINAL  
 Prepared by: ADucharme





**Legend**

**Enhancement Point**

- Existing Riparian
- Potential Riparian

**Culvert**

- Culvert
- Culvert with Barrier

**Generic Point**

- Bridge
- Fence
- Garbage/Pollution
- Livestock/Livestock Crossing
- Other

**Obstruction Point**

- Beaver Dam
- Cascade
- Dam
- Falls
- Fences
- Log Jam
- Persistant Debris
- Pump
- Velocity Barrier

**Discharge Point**

- Agricultural Runoff
- House Effluent
- Other
- Storm Drain
- Tile Drain
- Trench

**Top of Bank**

- Top of Bank
- Segment Break



Coordinate System: NAD 1983 UTM Zone 11N Transverse Mercator

# City of Salmon Arm

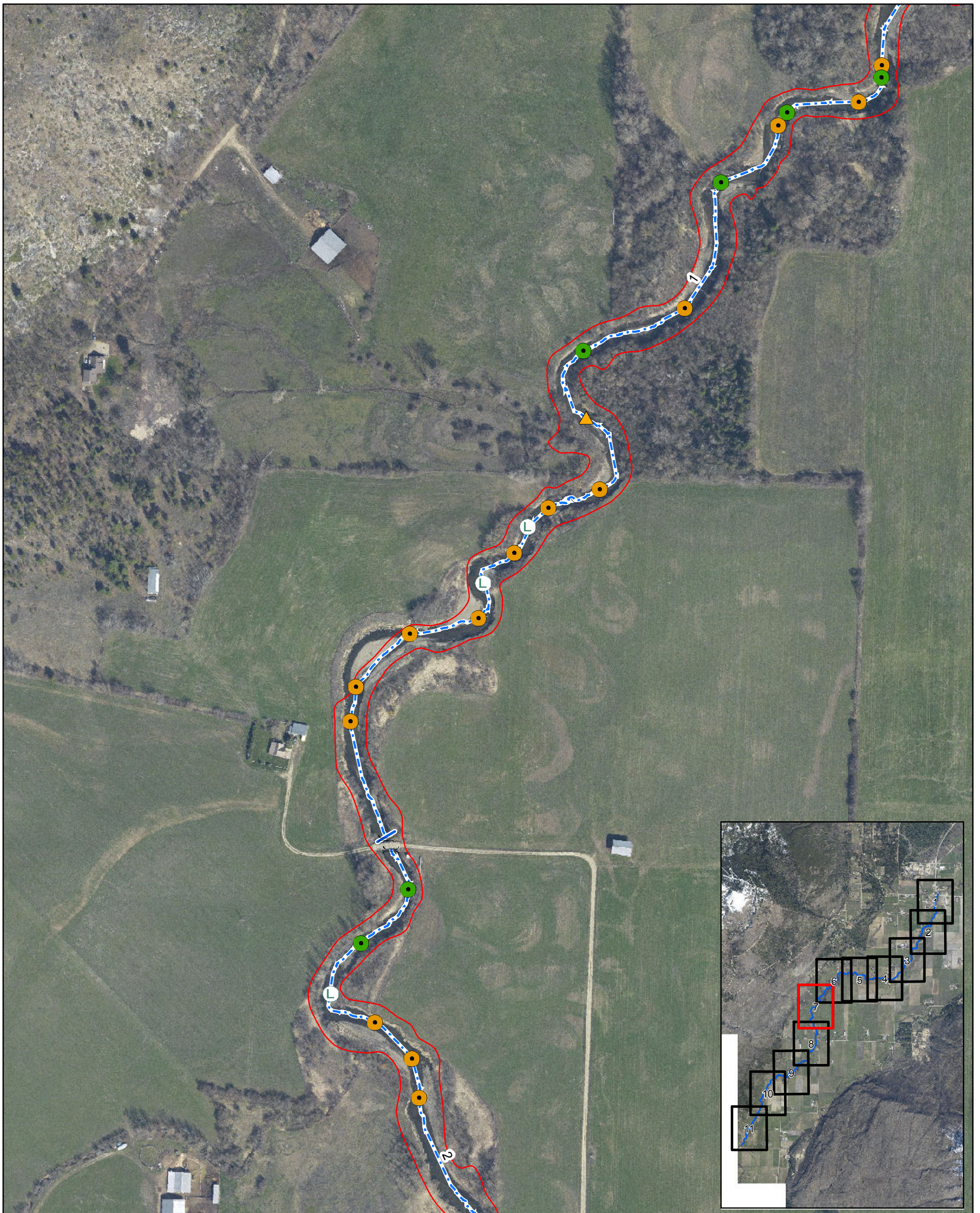
## Sensitive Habitat Inventory Mapping and Wetland Inventory Mapping Project Section Map

Salmon River Tile 6 of 11



Date: 10/17/2012  
Revision Number: FINAL  
Prepared by: ADucharme





**Legend**

**Enhancement Point**

- Existing Riparian
- Potential Riparian

**Culvert**

- Culvert
- Culvert with Barrier

**Generic Point**

- Bridge
- Fence
- Garbage/Pollution
- Livestock/Livestock Crossing
- Other

**Obstruction Point**

- Beaver Dam
- Cascade
- Dam
- Falls
- Fences
- Log Jam
- Persistant Debris
- Pump
- Velocity Barrier

**Discharge Point**

- Agricultural Runoff
- House Effluent
- Other
- Storm Drain
- Tile Drain
- Trench

**Top of Bank**

- Top of Bank
- Segment Break



Coordinate System: NAD 1983 UTM Zone 11N Transverse Mercator

# City of Salmon Arm

## Sensitive Habitat Inventory Mapping and Wetland Inventory Mapping Project Section Map

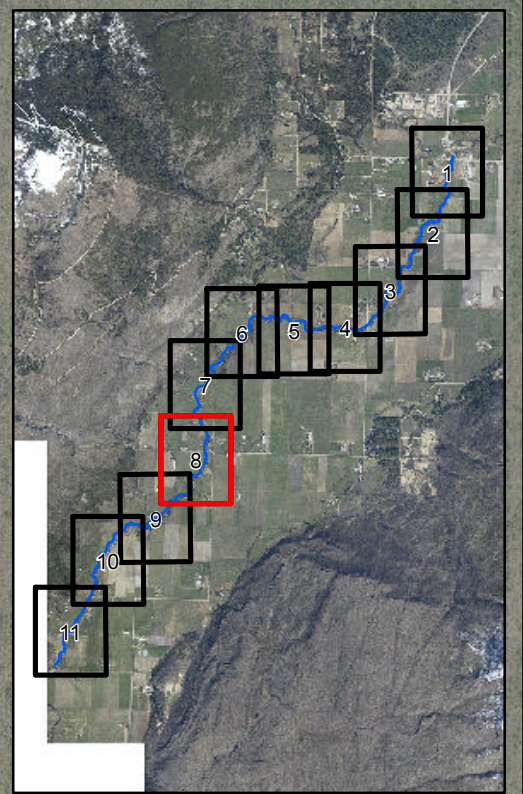
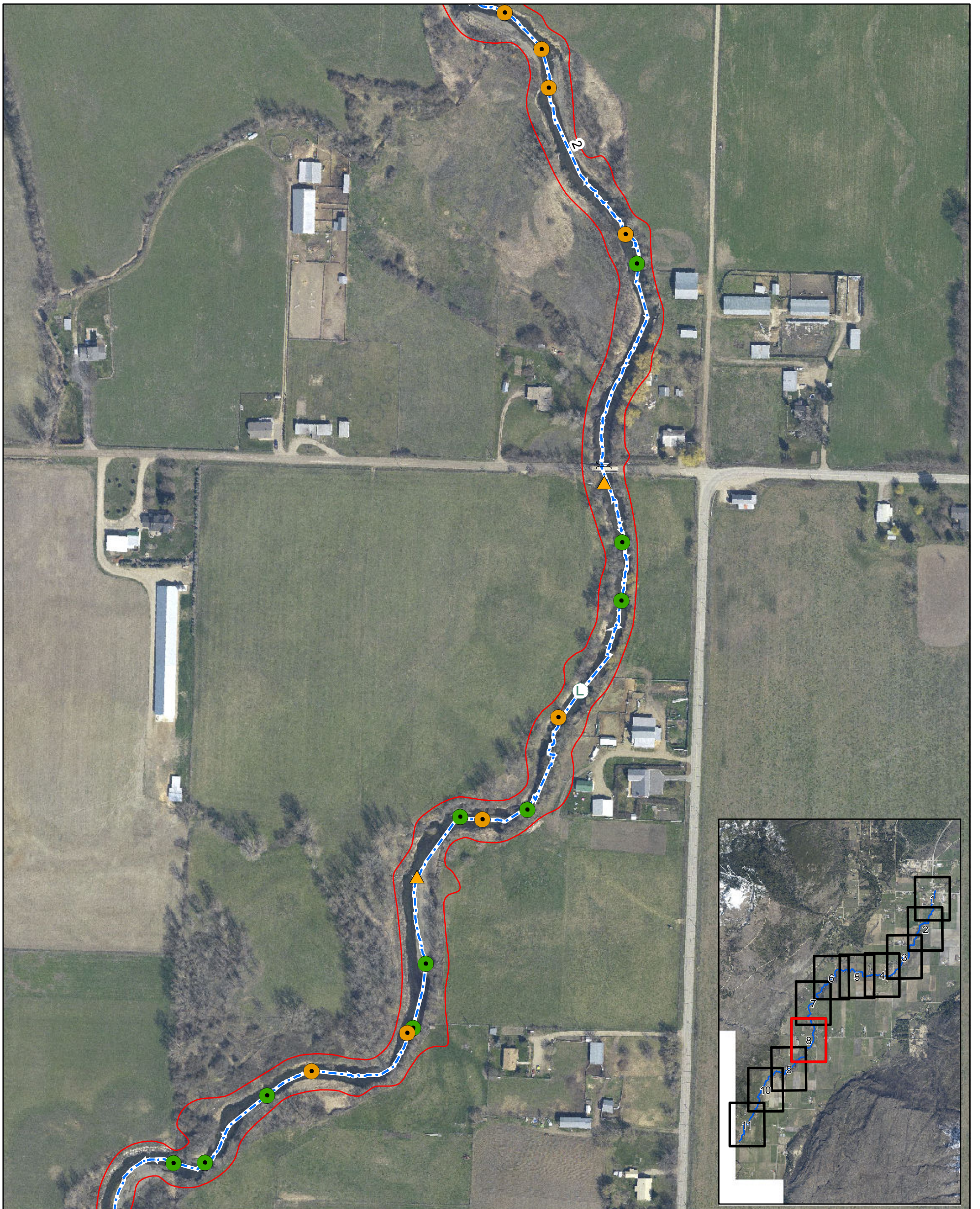
Salmon River Tile 7 of 11



Date: 10/17/2012  
Revision Number: FINAL

Prepared by: ADucharme





**Legend**

<b>Enhancement Point</b>	<b>Obstruction Point</b>	<b>Discharge Point</b>
● Existing Riparian	● Beaver Dam	✱ Agricultural Runoff
● Potential Riparian	☞ Cascade	⊗ House Effluent
<b>Culvert</b>	☞ Dam	● Other
● Culvert	☞ Falls	⊖ Storm Drain
● Culvert with Barrier	☞ Fences	⬢ Tile Drain
<b>Generic Point</b>	Ⓛ Log Jam	■ Trench
≡ Bridge	Ⓜ Persistent Debris	<b>Top of Bank</b>
☞☞☞ Fence	ⓐ Pump	— Top of Bank
▲ Garbage/Pollution	Ⓢ Velocity Barrier	- - - Segment Break
◆ Livestock/Livestock Crossing		
▲ Other		

1:3,000

0 25 50 100 150 Meters

Coordinate System: NAD 1983 UTM Zone 11N Transverse Mercator

## City of Salmon Arm

### Sensitive Habitat Inventory Mapping and Wetland Inventory Mapping Project Section Map

Salmon River Tile 8 of 11

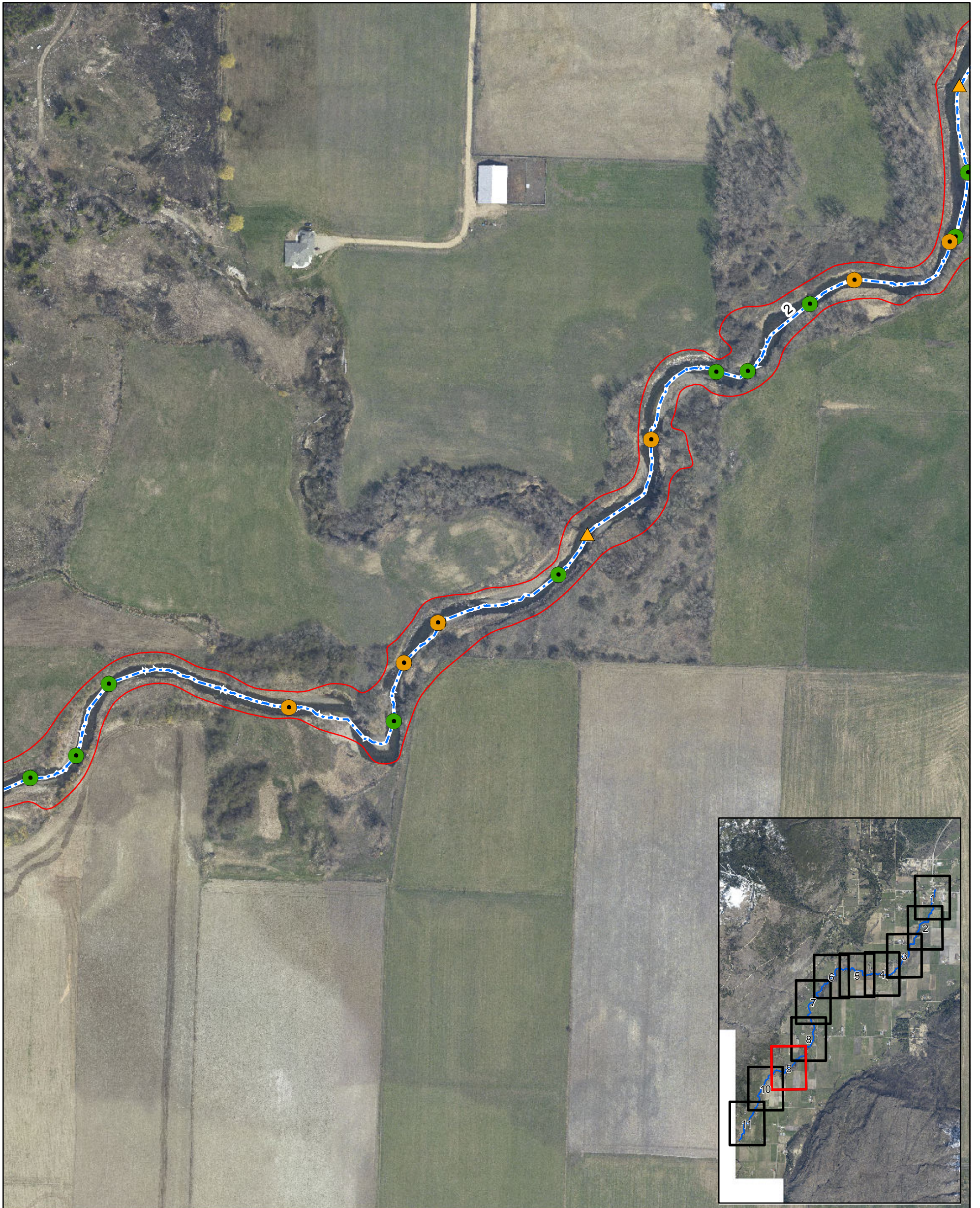
N

Date: 10/17/2012  
Revision Number: FINAL  
Prepared by: ADucharme

**FORSITE**  
Forest Management Specialists

*Salmon Arm*





**Legend**

**Enhancement Point**

- Existing Riparian
- Potential Riparian

**Culvert**

- Culvert
- Culvert with Barrier

**Generic Point**

- Bridge
- Fence
- Garbage/Pollution
- Livestock/Livestock Crossing
- Other

**Obstruction Point**

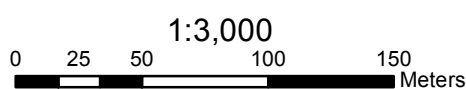
- Beaver Dam
- Cascade
- Dam
- Falls
- Fences
- Log Jam
- Persistant Debris
- Pump
- Velocity Barrier

**Discharge Point**

- Agricultural Runoff
- House Effluent
- Other
- Storm Drain
- Tile Drain
- Trench

**Top of Bank**

- Top of Bank
- Segment Break



Coordinate System: NAD 1983 UTM Zone 11N Transverse Mercator

**City of Salmon Arm**

**Sensitive Habitat Inventory Mapping and Wetland Inventory Mapping Project Section Map**

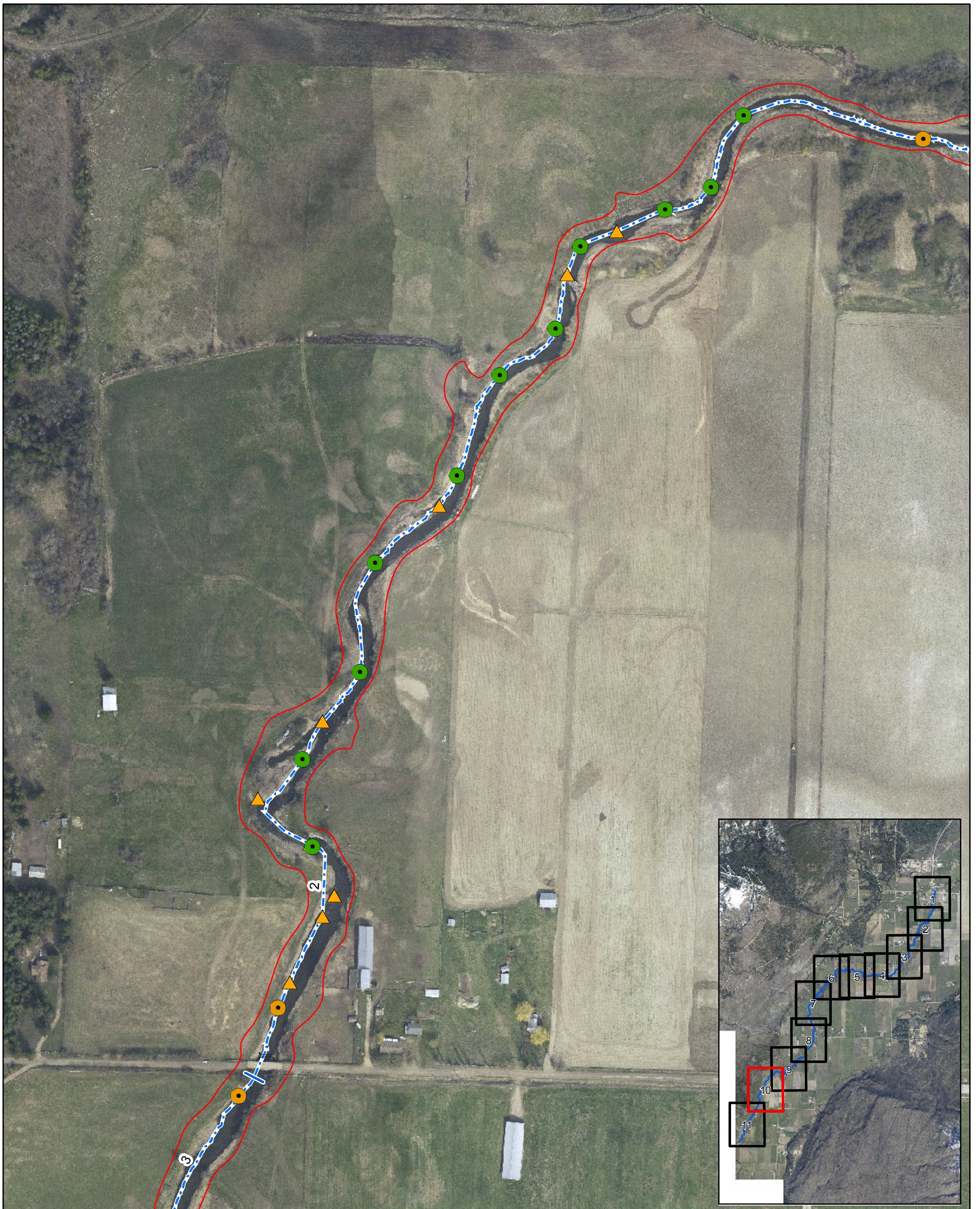
Salmon River Tile 9 of 11



Date: 10/17/2012  
Revision Number: FINAL

Prepared by: ADucharme





**Legend**

**Enhancement Point**

- Existing Riparian
- Potential Riparian

**Culvert**

- Culvert
- Culvert with Barrier

**Generic Point**

- Bridge
- Fence
- Garbage/Pollution
- Livestock/Livestock Crossing
- Other

**Obstruction Point**

- Beaver Dam
- Cascade
- Dam
- Falls
- Fences
- Log Jam
- Persistant Debris
- Pump
- Velocity Barrier

**Discharge Point**

- Agricultural Runoff
- House Effluent
- Other
- Storm Drain
- Tile Drain
- Trench

**Top of Bank**

- Top of Bank
- Segment Break



Coordinate System: NAD 1983 UTM Zone 11N Transverse Mercator

**City of Salmon Arm**

**Sensitive Habitat Inventory Mapping and Wetland Inventory Mapping Project Section Map**

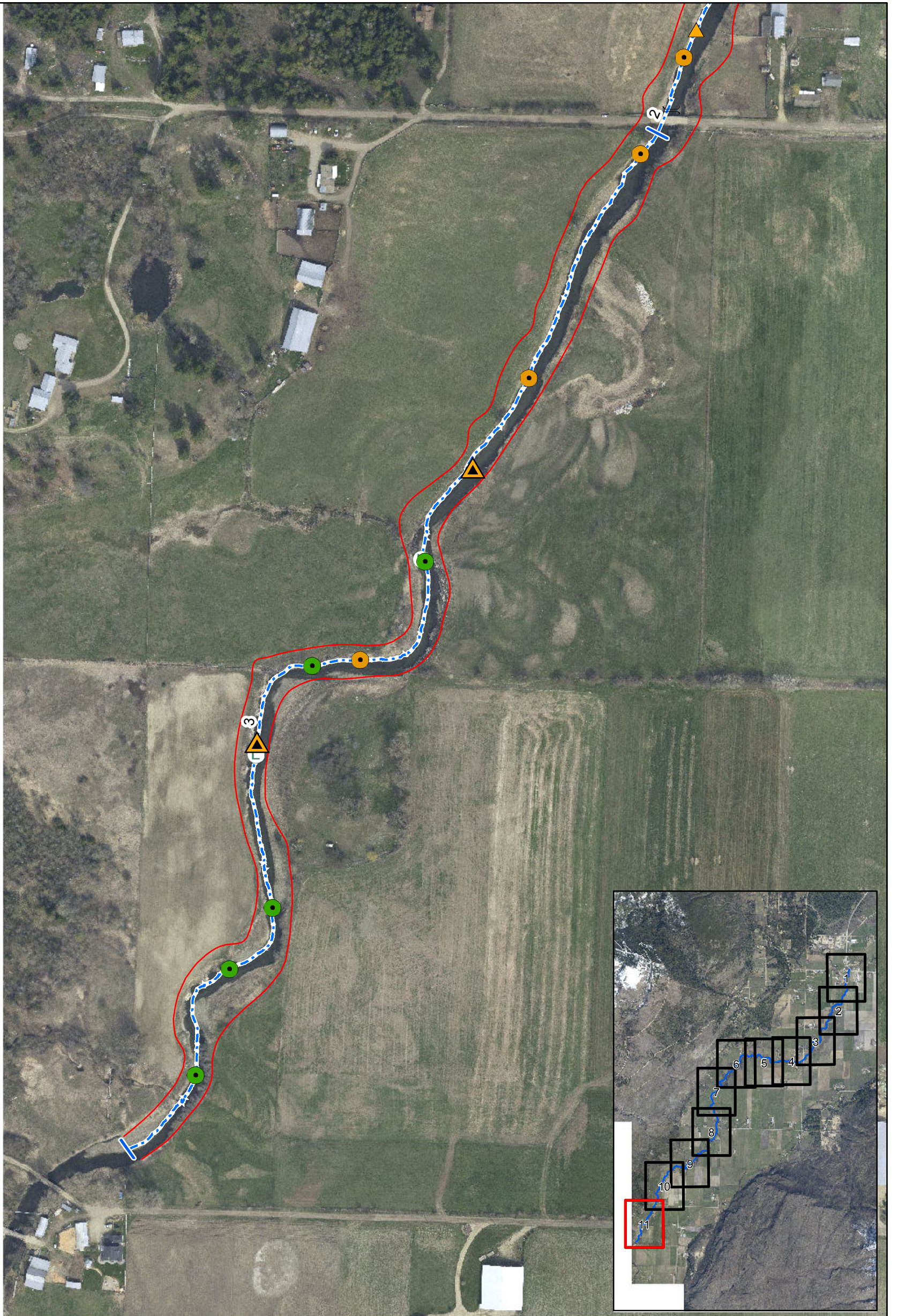
Salmon River Tile 10 of 11



Date: 10/17/2012  
Revision Number: FINAL

Prepared by: ADucharme





**Legend**

**Enhancement Point**

- Existing Riparian
- Potential Riparian

**Culvert**

- Culvert
- Culvert with Barrier

**Generic Point**

- Bridge
- Fence
- Garbage/Pollution
- Livestock/Livestock Crossing
- Other

**Obstruction Point**

- Beaver Dam
- Cascade
- Dam
- Falls
- Fences
- Log Jam
- Persistant Debris
- Pump
- Velocity Barrier

**Discharge Point**

- Agricultural Runoff
- House Effluent
- Other
- Storm Drain
- Tile Drain
- Trench

**Top of Bank**

- Top of Bank
- Segment Break



Coordinate System: NAD 1983 UTM Zone 11N Transverse Mercator

# City of Salmon Arm

## Sensitive Habitat Inventory Mapping and Wetland Inventory Mapping Project Section Map

Salmon River Tile 11 of 11



Date: 10/17/2012  
Revision Number: FINAL

Prepared by: ADucharme

