



**Legend**

<b>Enhancement Point</b>	<b>Obstruction Point</b>	<b>Discharge Point</b>
● Existing Riparian	● Beaver Dam	✱ Agricultural Runoff
● Potential Riparian	☞ Cascade	⊗ House Effluent
<b>Culvert</b>	☞ Dam	● Other
● Culvert	☞ Falls	Ⓧ Storm Drain
● Culvert with Barrier	✂ Fences	⬢ Tile Drain
<b>Generic Point</b>	☞ Log Jam	■ Trench
☐ Bridge	☞ Persistent Debris	<b>Top of Bank</b>
✂ Fence	☐ Pump	— Top of Bank
▲ Garbage/Pollution	⊙ Velocity Barrier	- - - Segment Break
◆ Livestock/Livestock Crossing		- - - TRIM Stream Only - no access permitted
▲ Other		

1:3,000

0 25 50 100 150 Meters

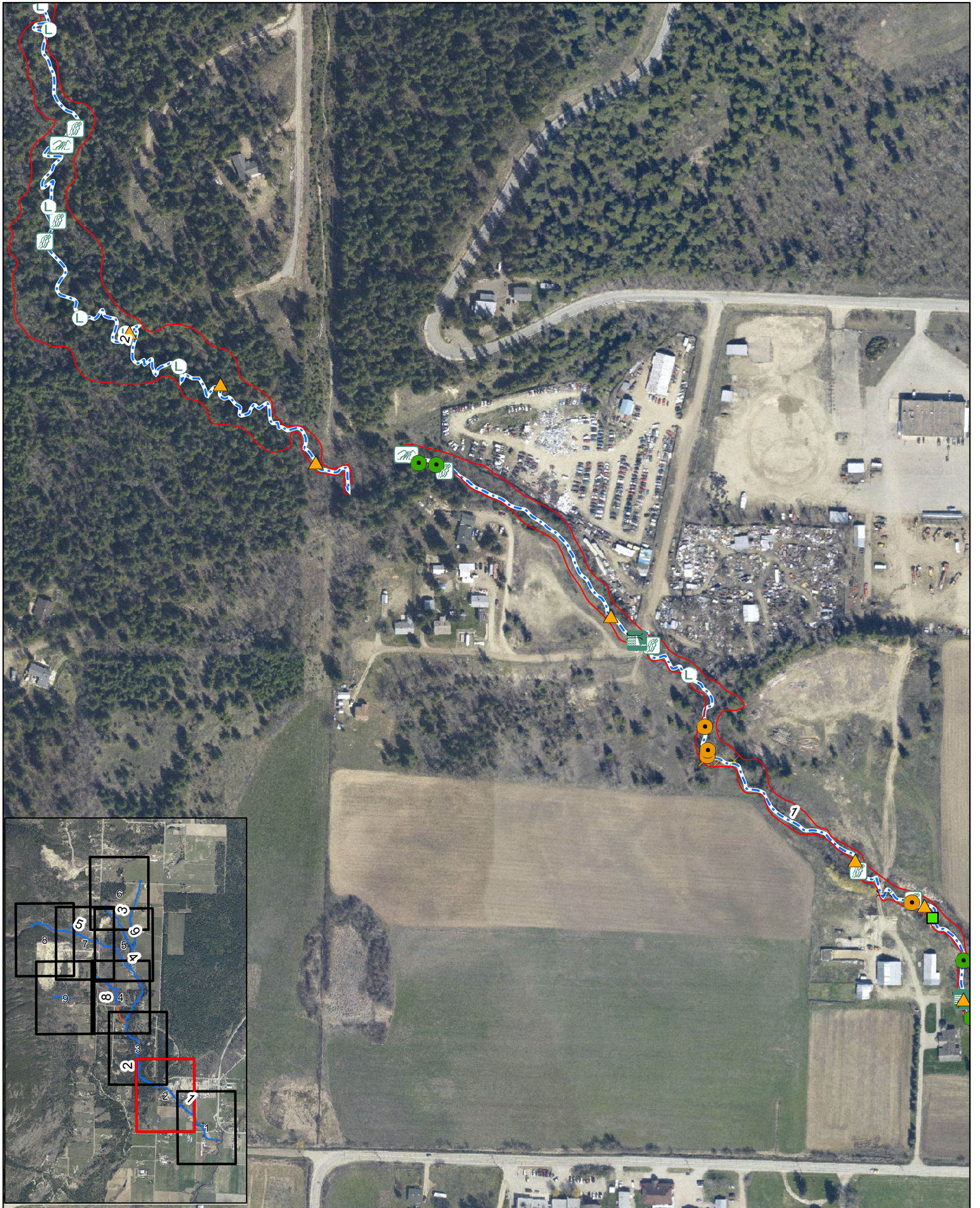
Coordinate System: NAD 1983 UTM Zone 11N Transverse Mercator

## City of Salmon Arm

### Sensitive Habitat Inventory Mapping and Wetland Inventory Mapping Project Section Map

Palmer Tile 1 of 9

Date: 10/17/2012  
Revision Number: FINAL  
Prepared by: ADucharme



**Legend**

<b>Enhancement Point</b>	<b>Obstruction Point</b>	<b>Discharge Point</b>
● Existing Riparian	● Beaver Dam	✱ Agricultural Runoff
● Potential Riparian	☞ Cascade	⊗ House Effluent
<b>Culvert</b>	☞ Dam	● Other
● Culvert	☞ Falls	⊖ Storm Drain
● Culvert with Barrier	☞ Fences	⬢ Tile Drain
<b>Generic Point</b>	Ⓛ Log Jam	■ Trench
≡ Bridge	Ⓜ Persistent Debris	<b>Top of Bank</b>
☞☞☞ Fence	Ⓟ Pump	— Top of Bank
▲ Garbage/Pollution	Ⓞ Velocity Barrier	- - - Segment Break
▲ Livestock/Livestock Crossing		- - - TRIM Stream Only - no access permitted
▲ Other		

1:3,000

0 25 50 100 150 Meters

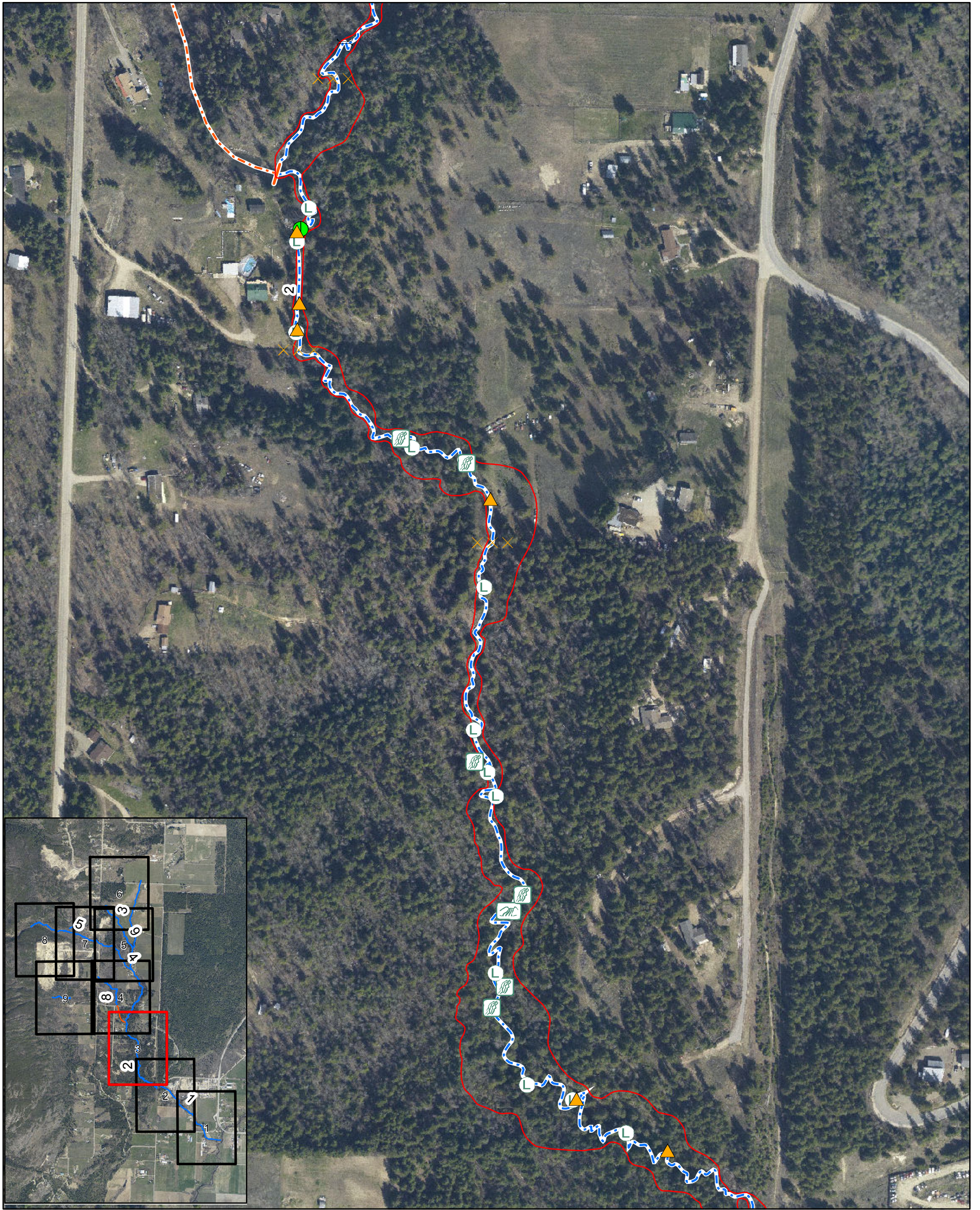
Coordinate System: NAD 1983 UTM Zone 11N Transverse Mercator

## City of Salmon Arm

### Sensitive Habitat Inventory Mapping and Wetland Inventory Mapping Project Section Map

Palmer Tile 2 of 9

Date: 10/17/2012  
Revision Number: FINAL  
Prepared by: ADucharme



**Legend**

<b>Enhancement Point</b>	<b>Obstruction Point</b>	<b>Discharge Point</b>
● Existing Riparian	● Beaver Dam	✱ Agricultural Runoff
● Potential Riparian	☞ Cascade	⊗ House Effluent
<b>Culvert</b>	☞ Dam	● Other
● Culvert	☞ Falls	Ⓧ Storm Drain
● Culvert with Barrier	✂ Fences	⬢ Tile Drain
<b>Generic Point</b>	Ⓛ Log Jam	■ Trench
≡ Bridge	Ⓜ Persistent Debris	<b>Top of Bank</b>
✂ Fence	Ⓢ Pump	— Top of Bank
▲ Garbage/Pollution	Ⓢ Velocity Barrier	- - - Segment Break
▲ Livestock/Livestock Crossing		- - - TRIM Stream Only - no access permitted
▲ Other		

1:3,000

0 25 50 100 150 Meters

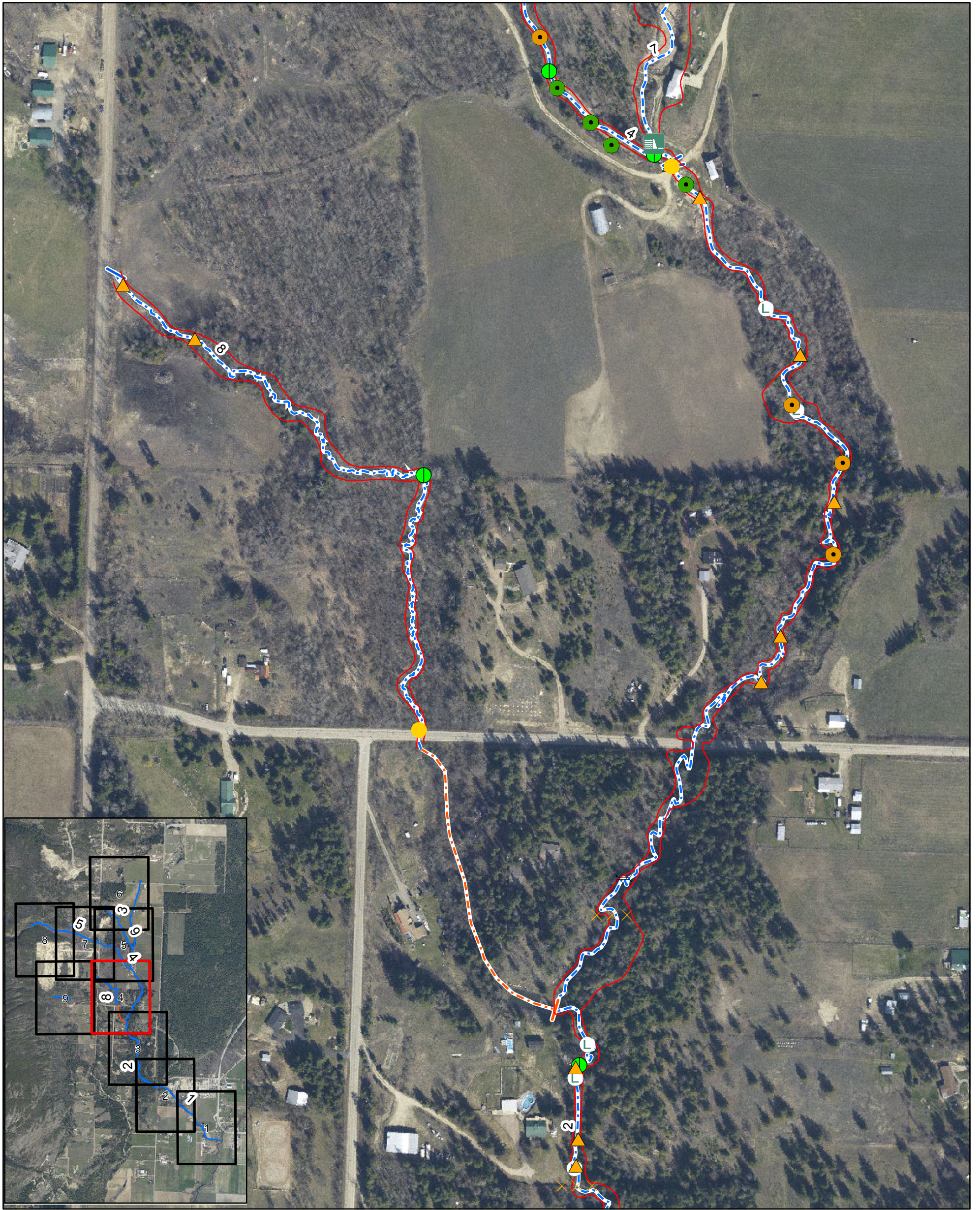
Coordinate System: NAD 1983 UTM Zone 11N Transverse Mercator

## City of Salmon Arm

### Sensitive Habitat Inventory Mapping and Wetland Inventory Mapping Project Section Map

Palmer Tile 3 of 9

Date: 10/17/2012  
Revision Number: FINAL  
Prepared by: ADucharme



**Legend**

<b>Enhancement Point</b>	<b>Obstruction Point</b>	<b>Discharge Point</b>
● Existing Riparian	● Beaver Dam	✱ Agricultural Runoff
● Potential Riparian	☞ Cascade	⊗ House Effluent
<b>Culvert</b>	☞ Dam	● Other
● Culvert	☞ Falls	⊖ Storm Drain
● Culvert with Barrier	☞ Fences	⬢ Tile Drain
<b>Generic Point</b>	Ⓛ Log Jam	■ Trench
☐ Bridge	Ⓜ Persistent Debris	<b>Top of Bank</b>
☒ Fence	Ⓟ Pump	— Top of Bank
▲ Garbage/Pollution	Ⓞ Velocity Barrier	- - - Segment Break
▲ Livestock/Livestock Crossing		- - - TRIM Stream Only - no access permitted
▲ Other		

1:3,000

0 25 50 100 150 Meters




Coordinate System: NAD 1983 UTM Zone 11N Transverse Mercator

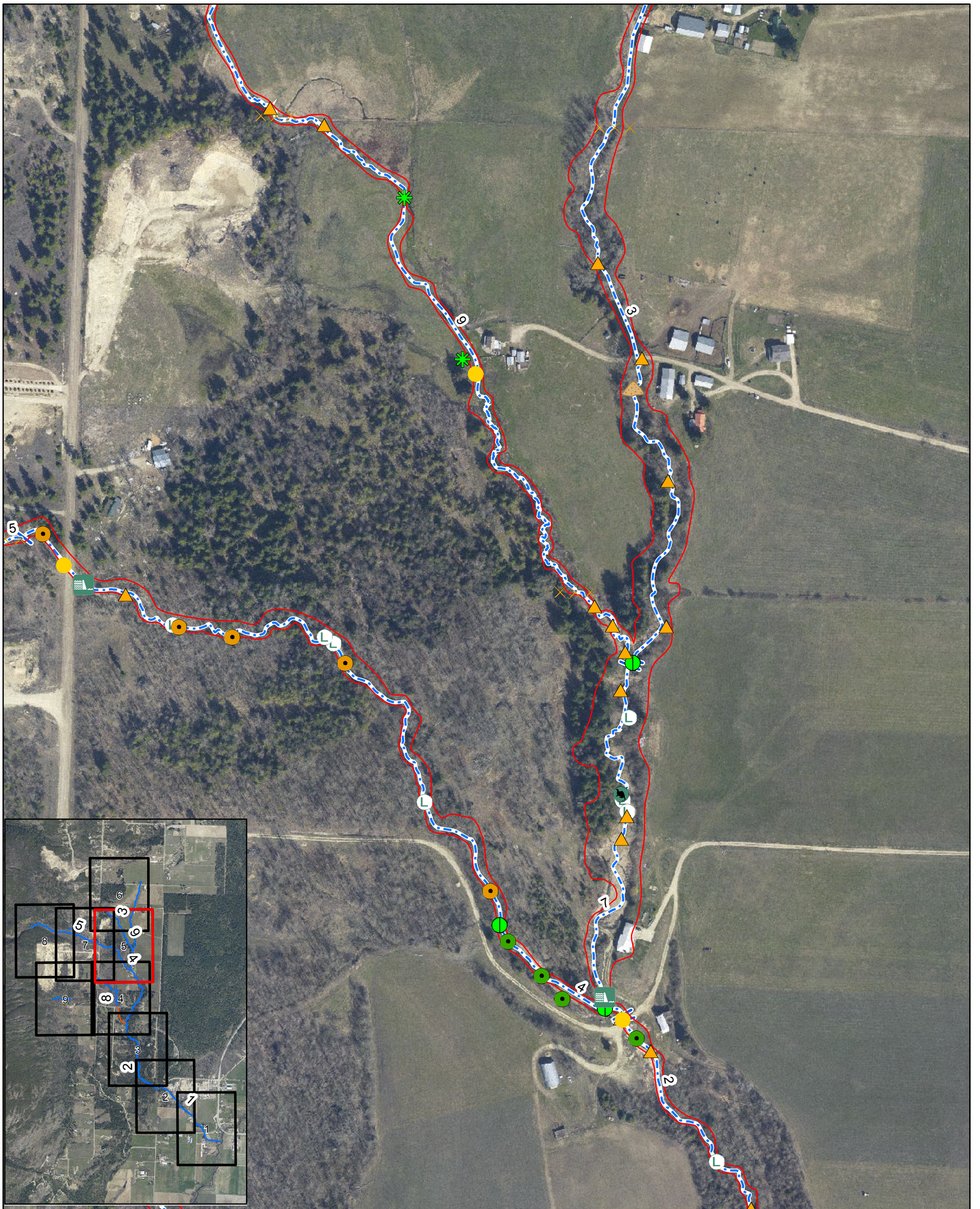
## City of Salmon Arm

### Sensitive Habitat Inventory Mapping and Wetland Inventory Mapping Project Section Map

Palmer Tile 4 of 9

Date: 10/17/2012  
Revision Number: FINAL  
Prepared by: ADucharme



**Legend**

<b>Enhancement Point</b>	<b>Obstruction Point</b>	<b>Discharge Point</b>
● Existing Riparian	● Beaver Dam	✱ Agricultural Runoff
● Potential Riparian	☞ Cascade	⊗ House Effluent
<b>Culvert</b>	☞ Dam	● Other
● Culvert	☞ Falls	⊖ Storm Drain
● Culvert with Barrier	☞ Fences	⬢ Tile Drain
<b>Generic Point</b>	☞ Log Jam	■ Trench
☞ Bridge	☞ Persistent Debris	<b>Top of Bank</b>
☞ Fence	☞ Pump	— Top of Bank
▲ Garbage/Pollution	☞ Velocity Barrier	- - - Segment Break
▲ Livestock/Livestock Crossing		- - - TRIM Stream Only - no access permitted
▲ Other		

1:3,000

0 25 50 100 150 Meters

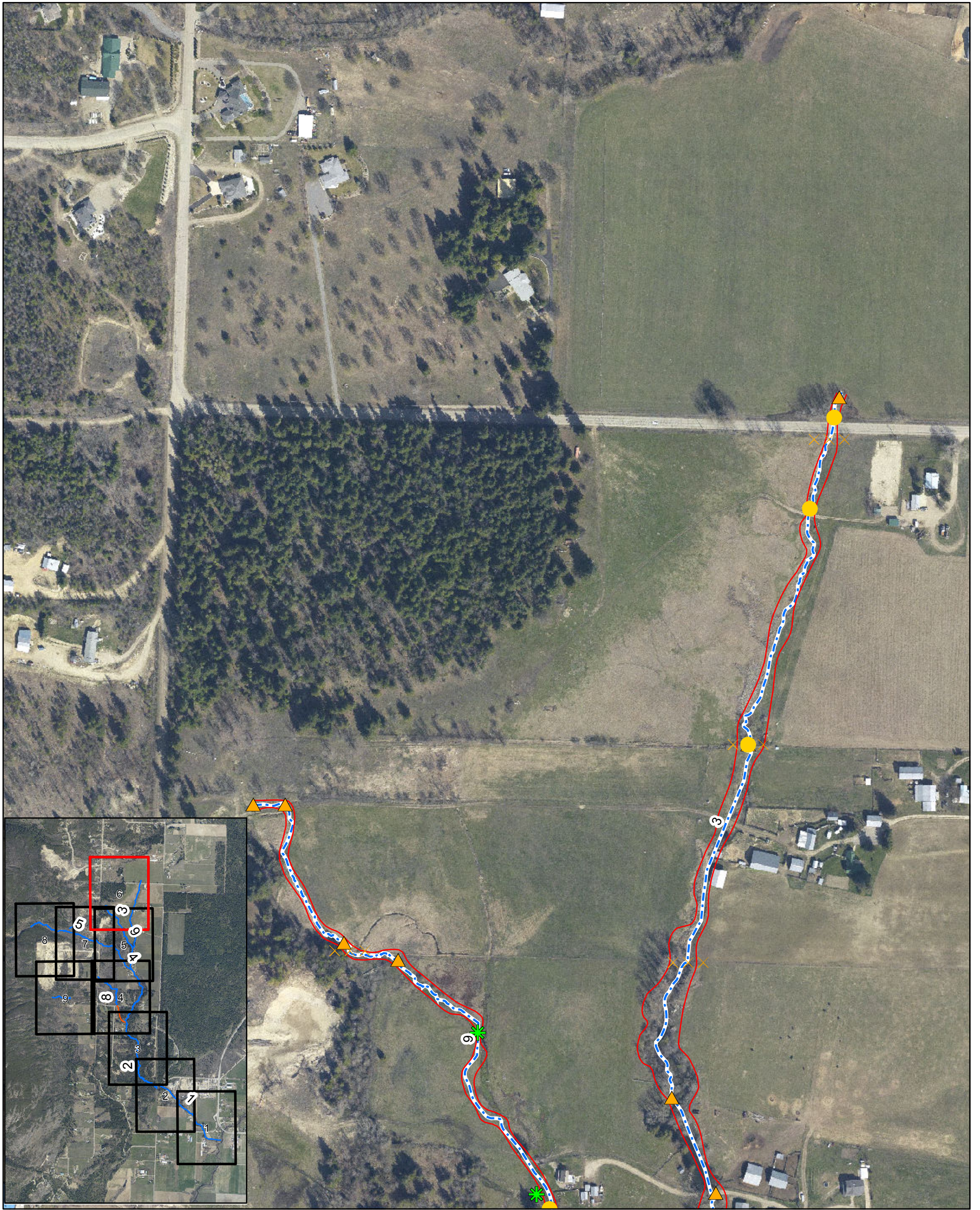
Coordinate System: NAD 1983 UTM Zone 11N Transverse Mercator

## City of Salmon Arm

### Sensitive Habitat Inventory Mapping and Wetland Inventory Mapping Project Section Map

Palmer Tile 5 of 9

Date: 10/17/2012  
Revision Number: FINAL  
Prepared by: ADucharme



**Legend**

<p><b>Enhancement Point</b></p> <ul style="list-style-type: none"> <li><span style="color: green;">●</span> Existing Riparian</li> <li><span style="color: orange;">●</span> Potential Riparian</li> </ul> <p><b>Culvert</b></p> <ul style="list-style-type: none"> <li><span style="color: yellow;">●</span> Culvert</li> <li><span style="color: red;">●</span> Culvert with Barrier</li> </ul> <p><b>Generic Point</b></p> <ul style="list-style-type: none"> <li> Bridge</li> <li> Fence</li> <li> Garbage/Pollution</li> <li> Livestock/Livestock Crossing</li> <li> Other</li> </ul>	<p><b>Obstruction Point</b></p> <ul style="list-style-type: none"> <li> Beaver Dam</li> <li> Cascade</li> <li> Dam</li> <li> Falls</li> <li> Fences</li> <li> Log Jam</li> <li> Persistant Debris</li> <li> Pump</li> <li> Velocity Barrier</li> </ul>	<p><b>Discharge Point</b></p> <ul style="list-style-type: none"> <li> Agricultural Runoff</li> <li> House Effluent</li> <li> Other</li> <li> Storm Drain</li> <li> Tile Drain</li> <li> Trench</li> </ul> <p><b>Top of Bank</b></p> <ul style="list-style-type: none"> <li> Top of Bank</li> <li> Segment Break</li> <li> TRIM Stream Only - no access permitted</li> </ul>
--------------------------------------------------------------------------------------------------------------------------------------------------------------------------------------------------------------------------------------------------------------------------------------------------------------------------------------------------------------------------------------------------------------------------------------------------------------------------------------------------------------------------------------------------------------------------------------------	--------------------------------------------------------------------------------------------------------------------------------------------------------------------------------------------------------------------------------------------------------	-----------------------------------------------------------------------------------------------------------------------------------------------------------------------------------------------------------------------------------------------------------------------------------------------------------------------------------------------------------------------------

1:3,000

0 25 50 100 150 Meters

Coordinate System: NAD 1983 UTM Zone 11N Transverse Mercator

# City of Salmon Arm

## Sensitive Habitat Inventory Mapping and Wetland Inventory Mapping Project Section Map

Palmer Tile 6 of 9



Date: 10/17/2012  
Revision Number: FINAL  
Prepared by: ADucharme





**Legend**

<b>Enhancement Point</b>	<b>Obstruction Point</b>	<b>Discharge Point</b>
● Existing Riparian	● Beaver Dam	✱ Agricultural Runoff
● Potential Riparian	☞ Cascade	⊗ House Effluent
<b>Culvert</b>	☞ Dam	● Other
● Culvert	☞ Falls	Ⓧ Storm Drain
● Culvert with Barrier	☞ Fences	⬢ Tile Drain
<b>Generic Point</b>	☞ Log Jam	■ Trench
≡ Bridge	☞ Persistent Debris	<b>Top of Bank</b>
☞☞☞ Fence	☞ Pump	— Top of Bank
▲ Garbage/Pollution	☞ Velocity Barrier	- - - Segment Break
◆ Livestock/Livestock Crossing		- - - TRIM Stream Only - no access permitted
▲ Other		

1:3,000

0 25 50 100 150 Meters

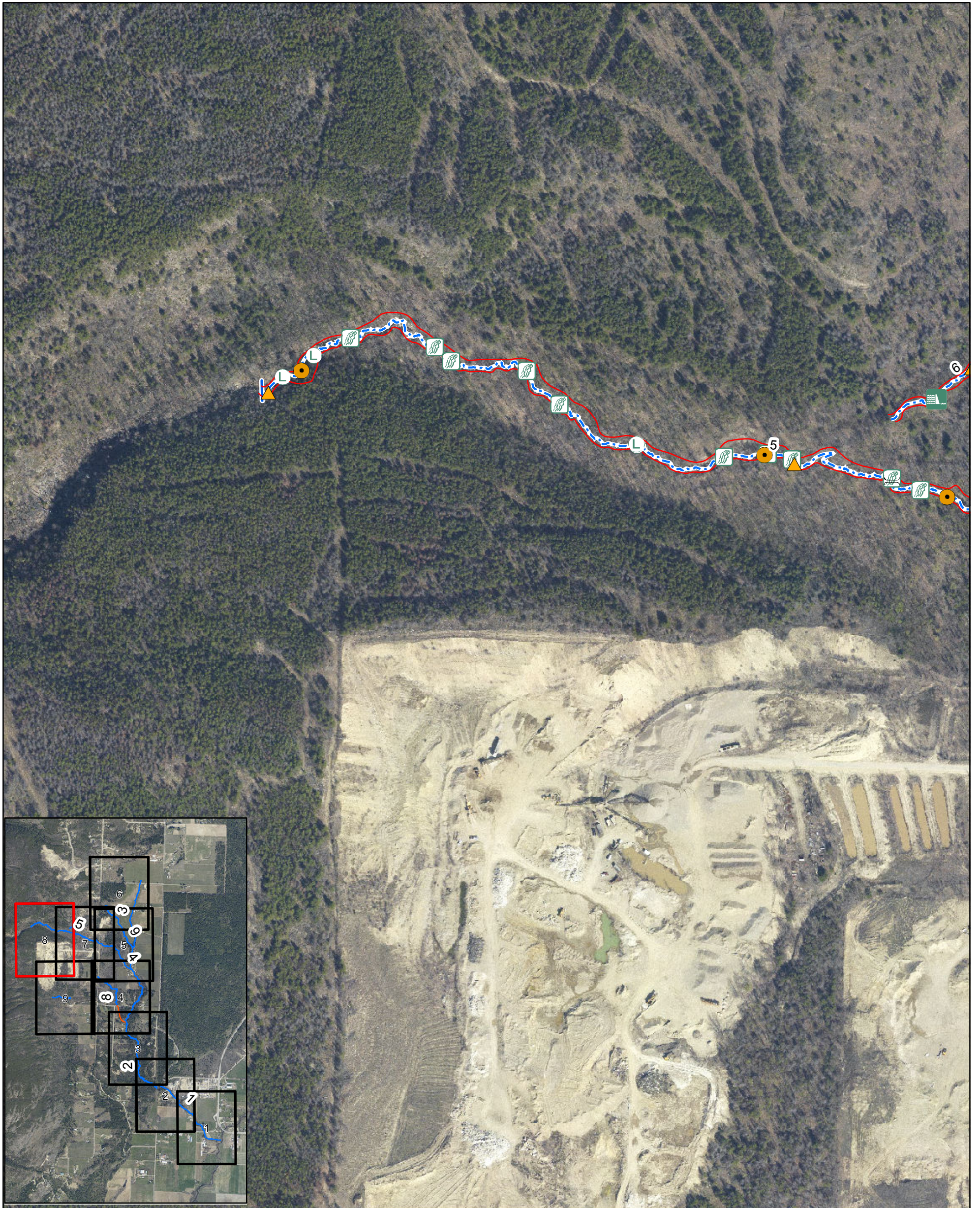
Coordinate System: NAD 1983 UTM Zone 11N Transverse Mercator

## City of Salmon Arm

### Sensitive Habitat Inventory Mapping and Wetland Inventory Mapping Project Section Map

Palmer Tile 7 of 9

Date: 10/17/2012  
Revision Number: FINAL  
Prepared by: ADucharme



**Legend**

<b>Enhancement Point</b>	<b>Obstruction Point</b>	<b>Discharge Point</b>
● Existing Riparian	● Beaver Dam	✱ Agricultural Runoff
● Potential Riparian	☞ Cascade	⊗ House Effluent
<b>Culvert</b>	☞ Dam	● Other
● Culvert	☞ Falls	⊙ Storm Drain
● Culvert with Barrier	☞ Fences	⬢ Tile Drain
<b>Generic Point</b>	☞ Log Jam	■ Trench
≡ Bridge	☞ Persistent Debris	<b>Top of Bank</b>
☞☞☞ Fence	☞ Pump	— Top of Bank
▲ Garbage/Pollution	☞ Velocity Barrier	- - - Segment Break
◆ Livestock/Livestock Crossing		- - - TRIM Stream Only - no access permitted
▲ Other		

1:3,000

0 25 50 100 150 Meters



Coordinate System: NAD 1983 UTM Zone 11N Transverse Mercator

## City of Salmon Arm

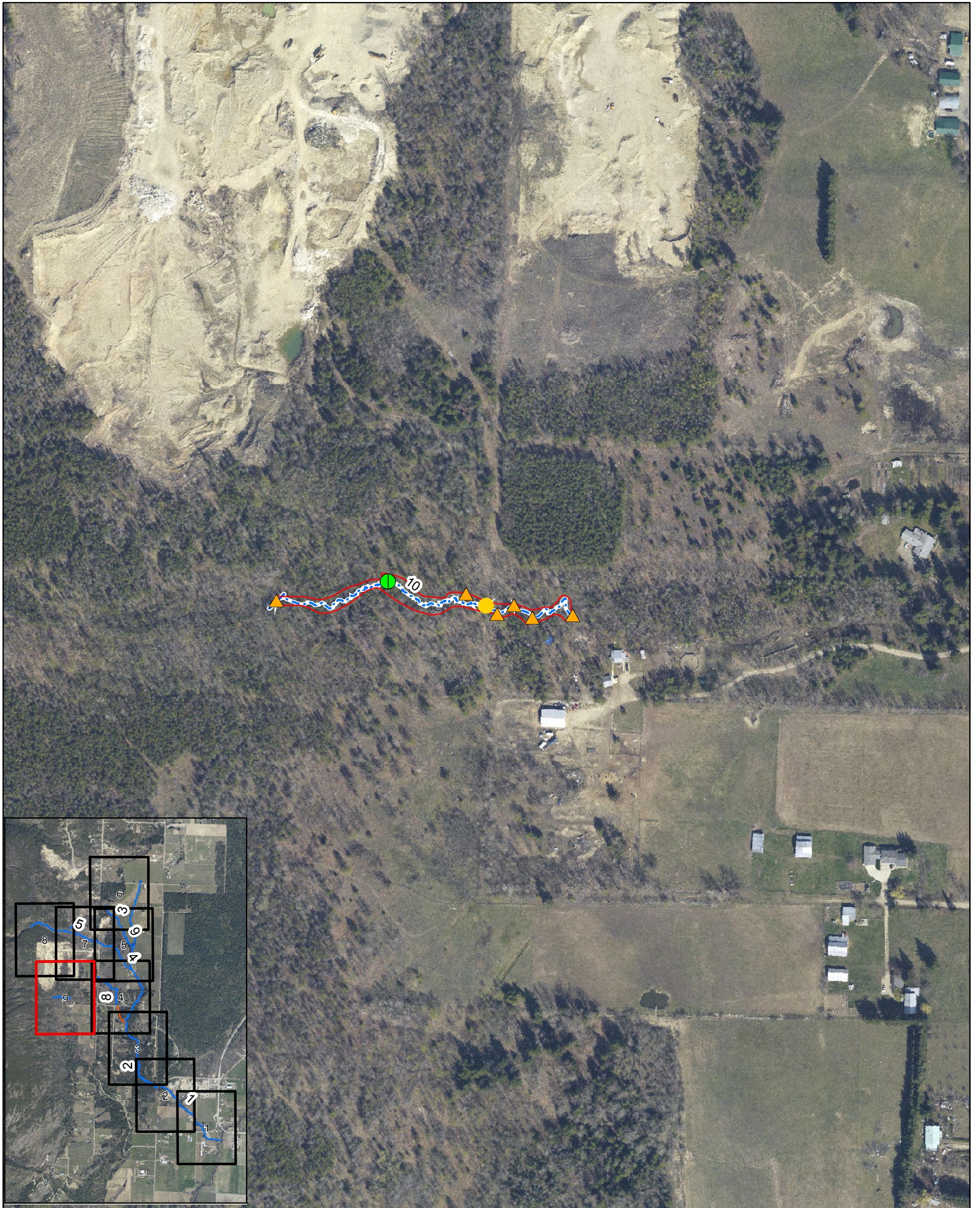
### Sensitive Habitat Inventory Mapping and Wetland Inventory Mapping Project Section Map

Palmer Tile 8 of 9

Date: 10/17/2012  
Revision Number: FINAL  
Prepared by: ADucharme





**Legend**

<b>Enhancement Point</b>	<b>Obstruction Point</b>	<b>Discharge Point</b>
● Existing Riparian	● Beaver Dam	✱ Agricultural Runoff
● Potential Riparian	☞ Cascade	⊗ House Effluent
<b>Culvert</b>	☞ Dam	● Other
● Culvert	☞ Falls	Ⓧ Storm Drain
● Culvert with Barrier	✂ Fences	⬠ Tile Drain
<b>Generic Point</b>	Ⓛ Log Jam	■ Trench
≡ Bridge	Ⓜ Persistent Debris	<b>Top of Bank</b>
✂ Fence	Ⓢ Pump	— Top of Bank
▲ Garbage/Pollution	Ⓞ Velocity Barrier	- - - Segment Break
◆ Livestock/Livestock Crossing		- - - TRIM Stream Only - no access permitted
▲ Other		

1:3,000

0 25 50 100 150 Meters

Coordinate System: NAD 1983 UTM Zone 11N Transverse Mercator

## City of Salmon Arm

### Sensitive Habitat Inventory Mapping and Wetland Inventory Mapping Project Section Map

Palmer Tile 9 of 9

Date: 10/17/2012  
Revision Number: FINAL  
Prepared by: ADucharme