

Legend

Enhancement Point

- Existing Riparian
- Potential Riparian

Culvert

- Culvert
- Culvert with Barrier

Generic Point

- Bridge
- Fence
- Garbage/Pollution
- Livestock/Livestock Crossing
- Other

Obstruction Point

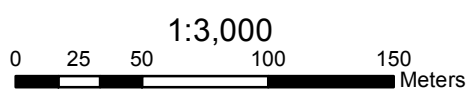
- Beaver Dam
- Cascade
- Dam
- Falls
- Fences
- Log Jam
- Persistent Debris
- Pump
- Velocity Barrier

Discharge Point

- Agricultural Runoff
- House Effluent
- Other
- Storm Drain
- Tile Drain
- Trench

Top of Bank

- Top of Bank
- Segment Break



Coordinate System: NAD 1983 UTM Zone 11N Transverse Mercator

City of Salmon Arm

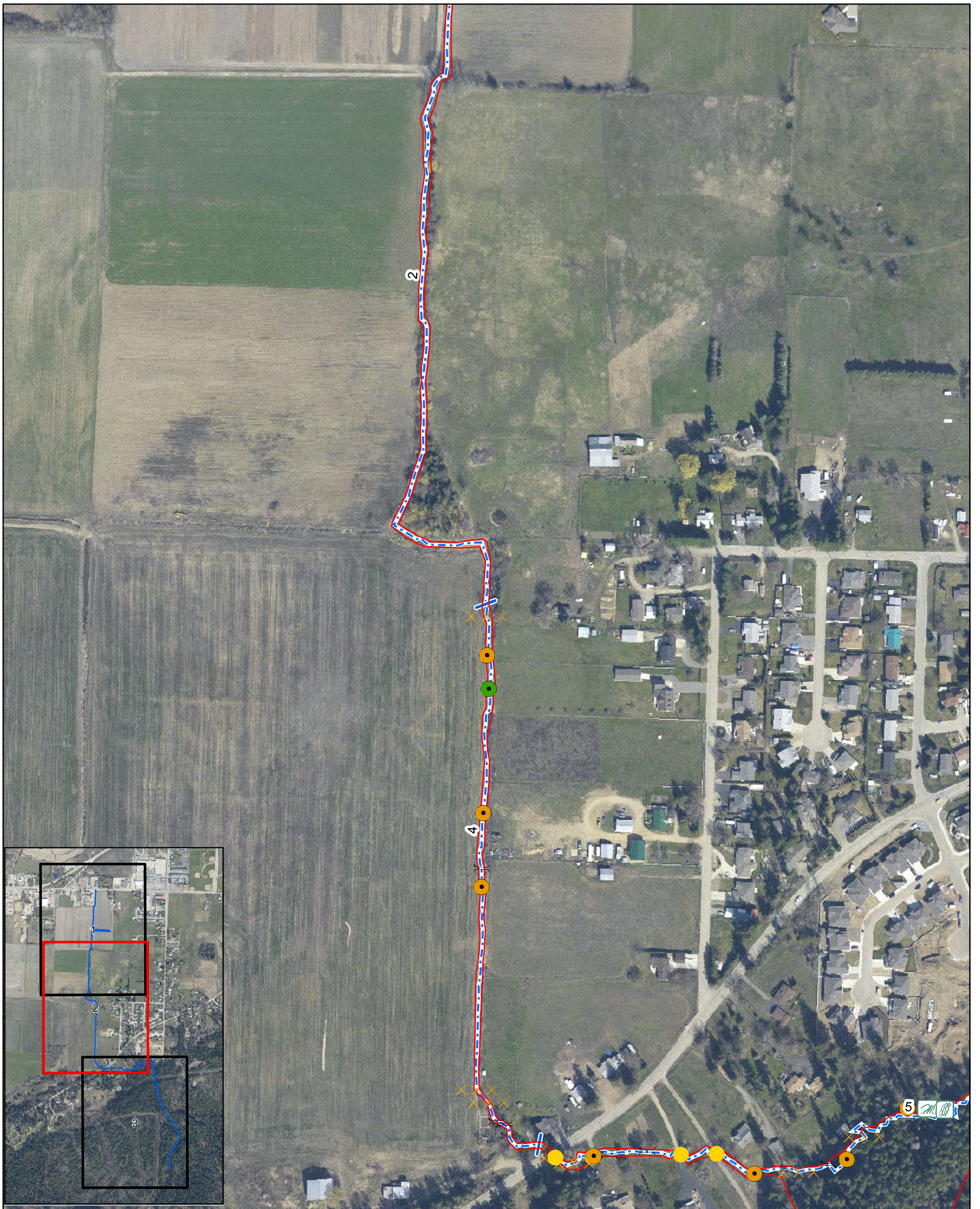
Sensitive Habitat Inventory Mapping and Wetland Inventory Mapping Project Section Map

Hobson Tile 1 of 3



Date: 10/17/2012
Revision Number: FINAL
Prepared by: ADucharme





Legend

<p>Enhancement Point</p> <ul style="list-style-type: none"> ● Existing Riparian ● Potential Riparian <p>Culvert</p> <ul style="list-style-type: none"> ● Culvert ● Culvert with Barrier <p>Generic Point</p> <ul style="list-style-type: none"> Bridge Fence Garbage/Pollution Livestock/Livestock Crossing Other 	<p>Obstruction Point</p> <ul style="list-style-type: none"> Beaver Dam Cascade Dam Falls Fences Log Jam Persistant Debris Pump Velocity Barrier 	<p>Discharge Point</p> <ul style="list-style-type: none"> Agricultural Runoff House Effluent Other Storm Drain Tile Drain Trench <p>Top of Bank</p> <ul style="list-style-type: none"> — Top of Bank — Segment Break
--	--	---

1:3,000

0 25 50 100 150 Meters

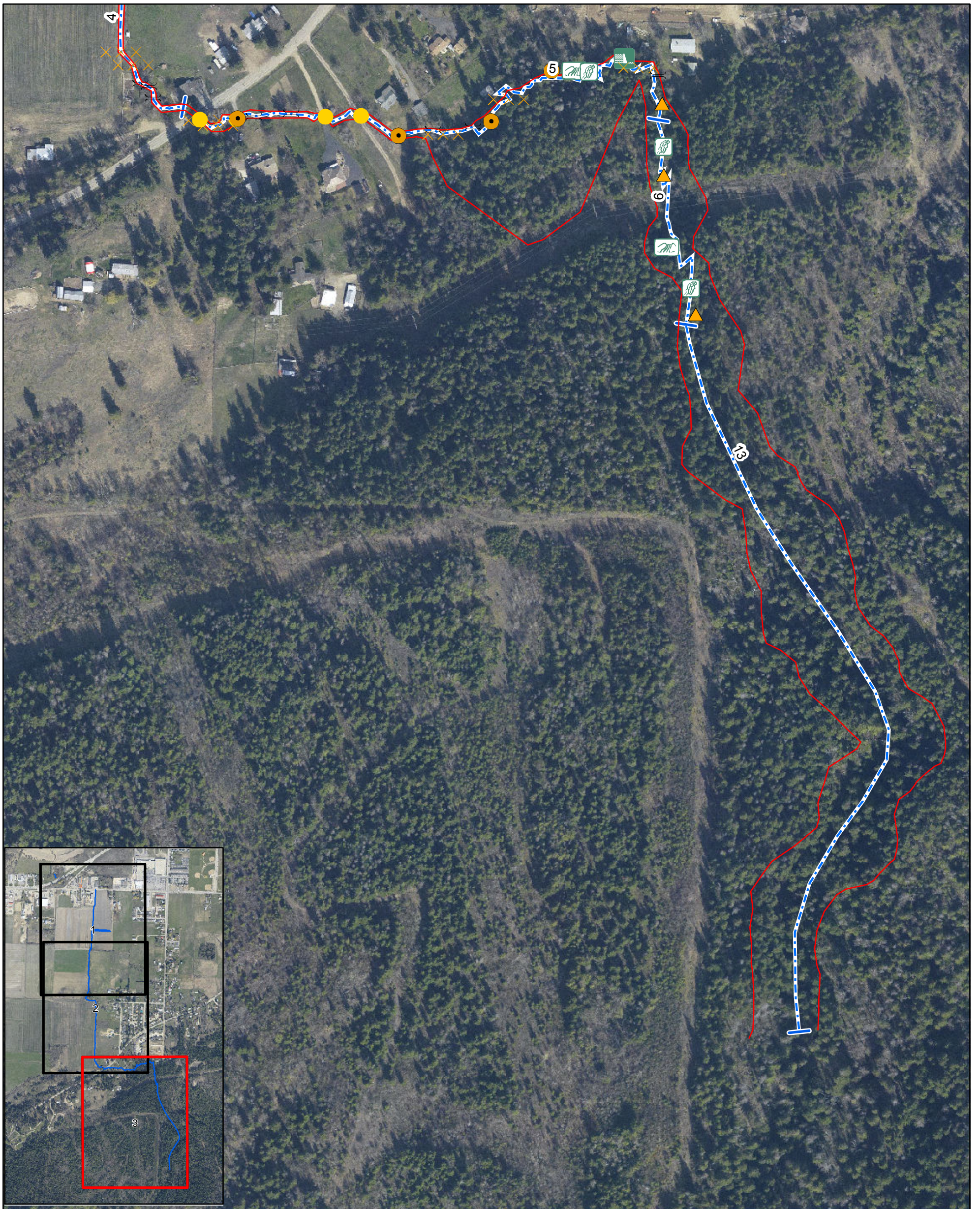
Coordinate System: NAD 1983 UTM Zone 11N Transverse Mercator

City of Salmon Arm

Sensitive Habitat Inventory Mapping and Wetland Inventory Mapping Project Section Map

Hobson Tile 2 of 3

Date: 10/17/2012
Revision Number: FINAL
Prepared by: ADucharme



Legend

<p>Enhancement Point</p> <ul style="list-style-type: none"> ● Existing Riparian ● Potential Riparian <p>Culvert</p> <ul style="list-style-type: none"> ● Culvert ● Culvert with Barrier <p>Generic Point</p> <ul style="list-style-type: none"> Bridge Fence Garbage/Pollution Livestock/Livestock Crossing Other 	<p>Obstruction Point</p> <ul style="list-style-type: none"> Beaver Dam Cascade Dam Falls Fences Log Jam Persistant Debris Pump Velocity Barrier 	<p>Discharge Point</p> <ul style="list-style-type: none"> Agricultural Runoff House Effluent Other Storm Drain Tile Drain Trench <p>Top of Bank</p> <ul style="list-style-type: none"> — Top of Bank - - - Segment Break
--	--	---

1:3,000

0 25 50 100 150 Meters

Coordinate System: NAD 1983 UTM Zone 11N Transverse Mercator

City of Salmon Arm

Sensitive Habitat Inventory Mapping and Wetland Inventory Mapping Project

Section Map

Hobson Tile 3 of 3



Date: 10/17/2012
Revision Number: FINAL
Prepared by: ADucharme

