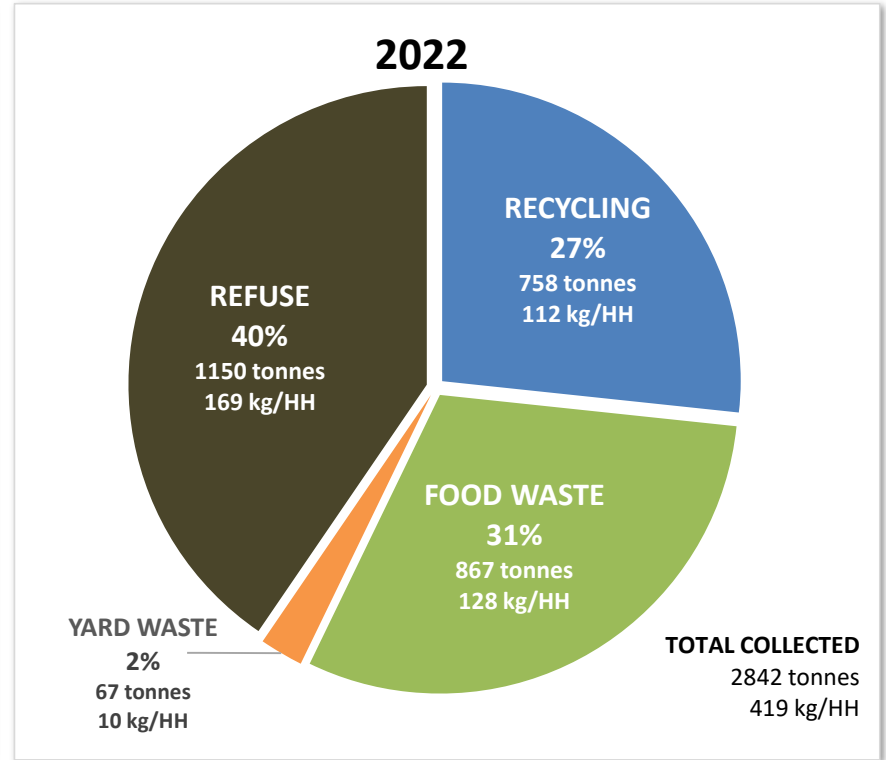
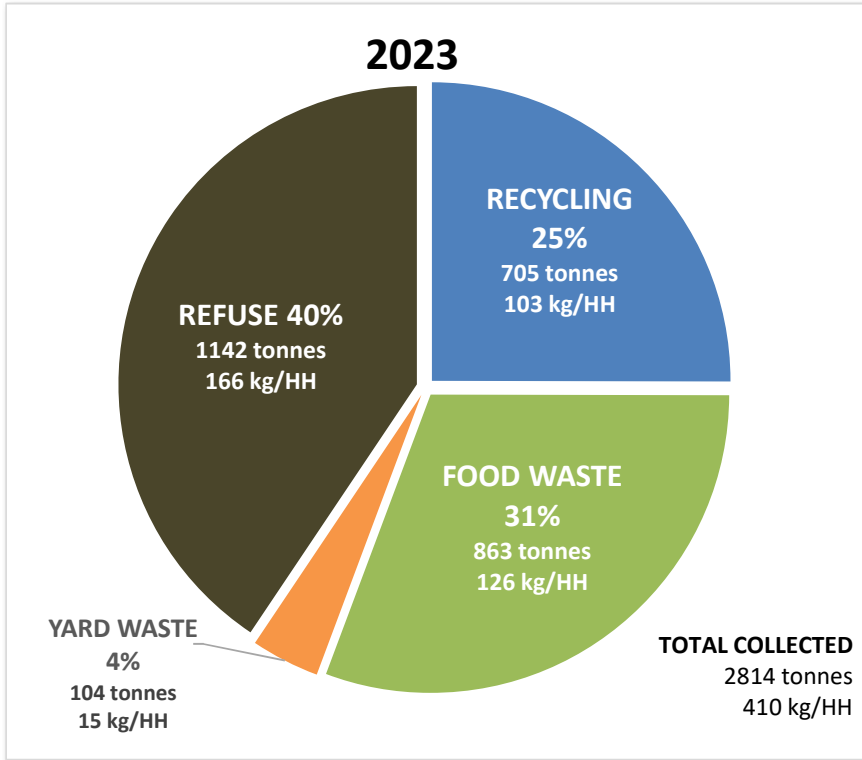


**Curbside Collection Results 2023 with Comparison to 2022**

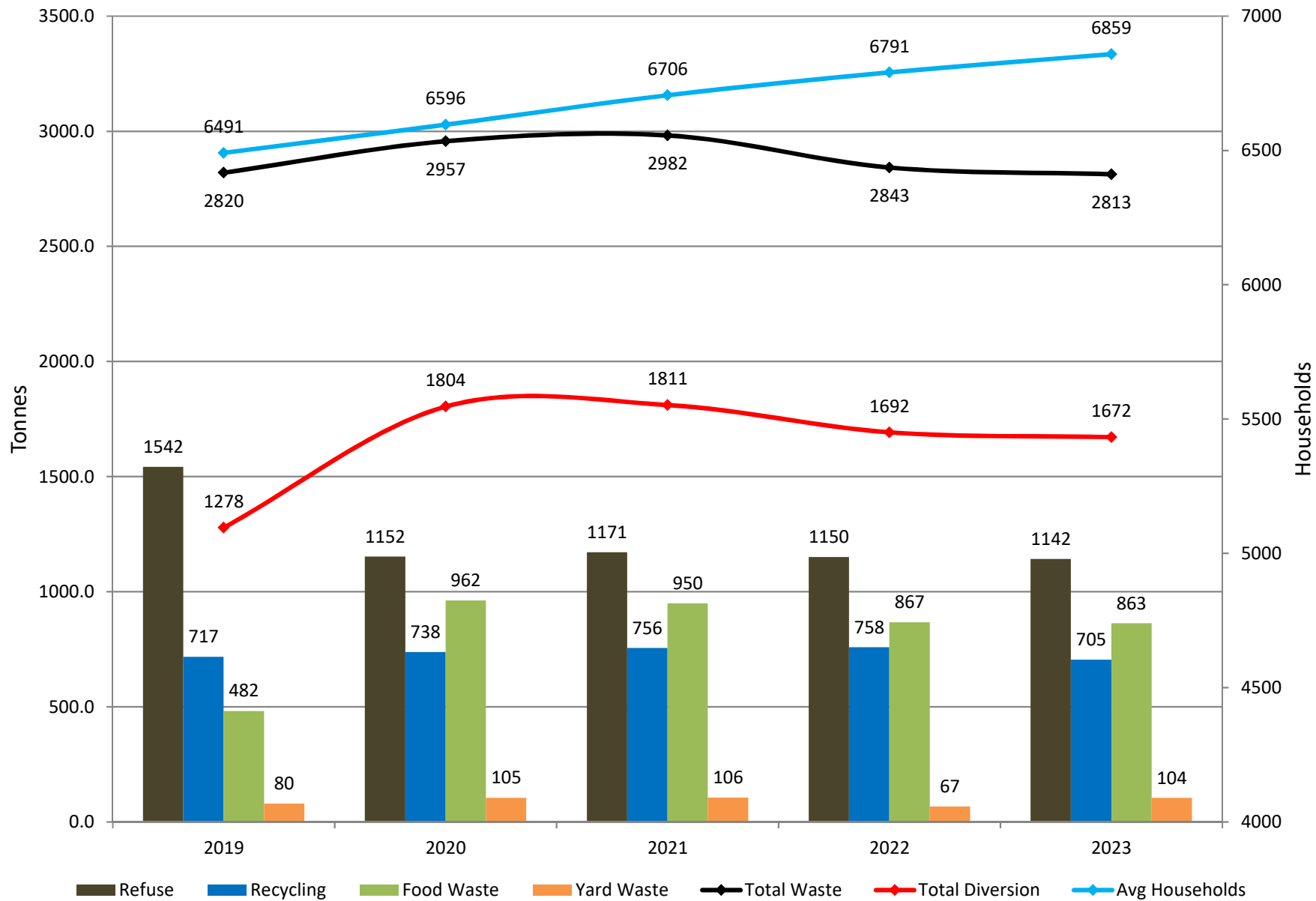


2023 - 2022 Comparison						
Stream	Tonnes (t)	Change from 2022 (t)	% Change Total	Per HH* (kg)	Change from 2022 (kg)	% Change per HH
Recycling	704.5	-53.7	-7.1%	103	-9	-8.0%
Food Waste	862.7	-4.4	-0.5%	126	-2	-1.5%
Yard Waste	104.5	37.4	55.7%	15	5	54.1%
Refuse	1141.7	-8.4	-0.7%	166	-3	-1.7%
<b>Total</b>	<b>2813.4</b>	<b>-29.1</b>	<b>-1.0%</b>	<b>410</b>	<b>-8</b>	<b>-2.0%</b>

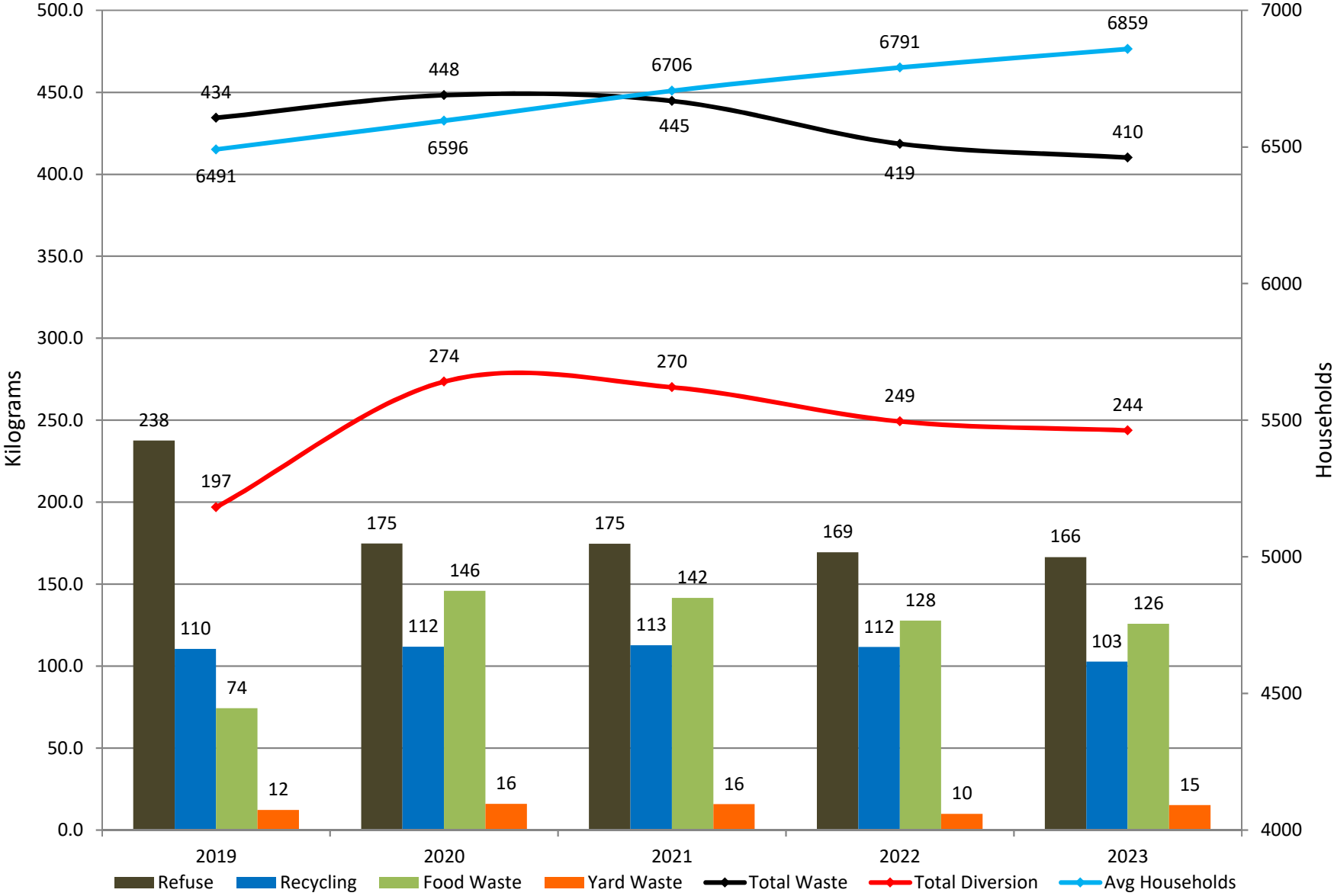
Average Households	
2023	6859
2022	6791
<b>% Change</b>	<b>1.0%</b>

Diversion Rate		
2023		59.4%
2022		59.5%

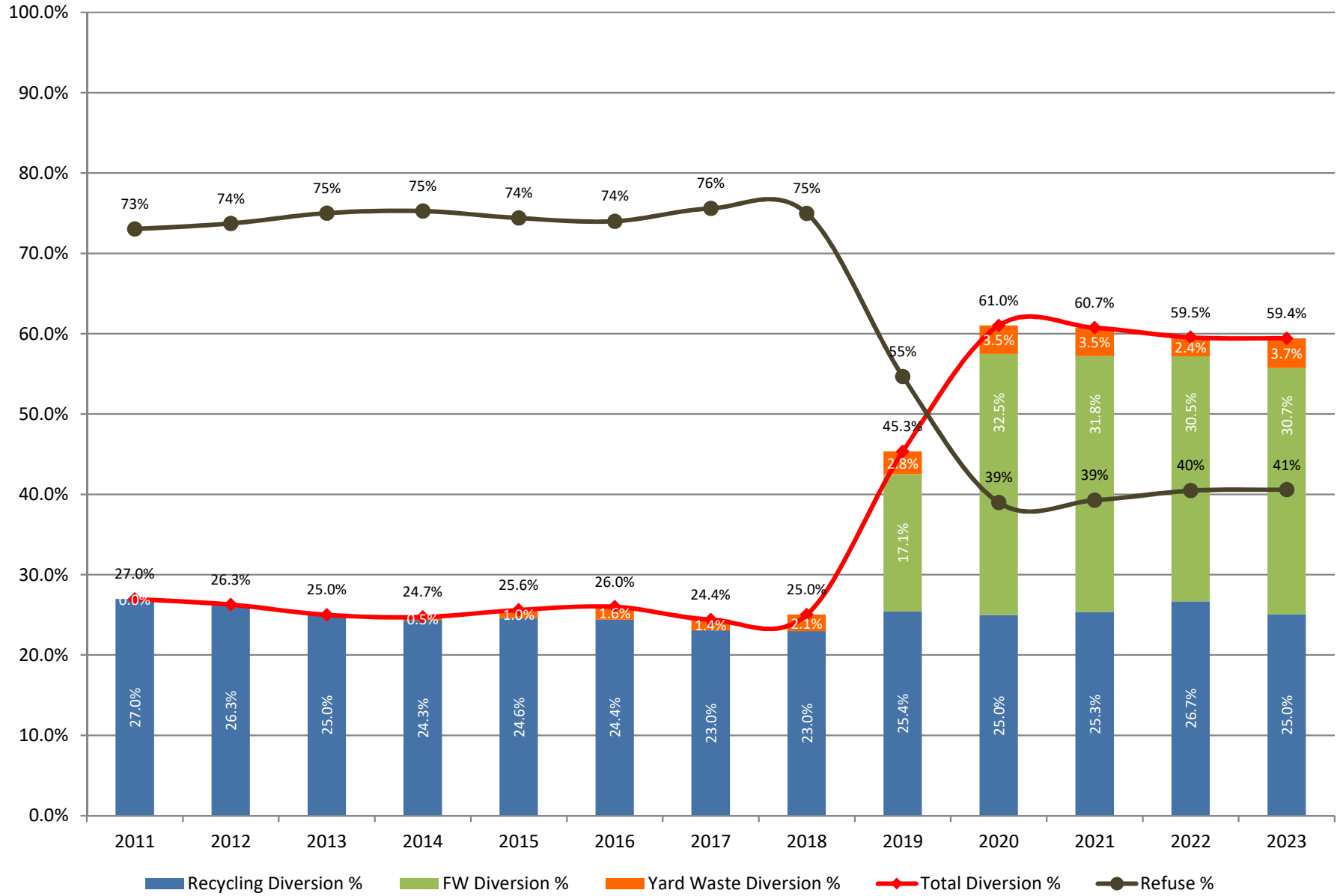
## Curbside Collection History - Totals by Waste Stream



# Curbside Collection History - Per Household (HH) by Waste Stream



## Curbside Collection History - Diversion Rate vs Refuse Rate



# Curbside Collection - Totals Collected by Stream

