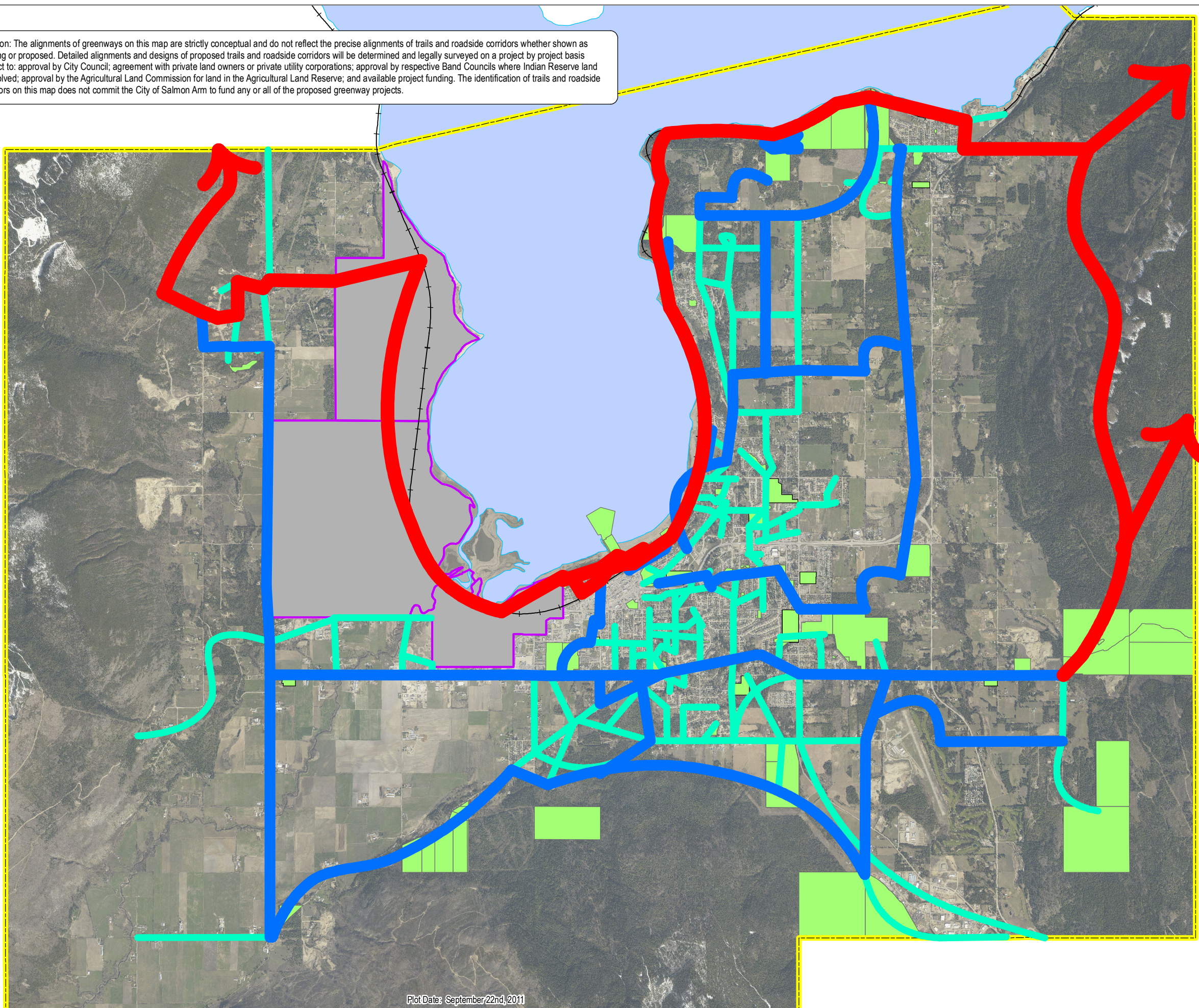








Notation: The alignments of greenways on this map are strictly conceptual and do not reflect the precise alignments of trails and roadside corridors whether shown as existing or proposed. Detailed alignments and designs of proposed trails and roadside corridors will be determined and legally surveyed on a project by project basis subject to: approval by City Council; agreement with private land owners or private utility corporations; approval by respective Band Councils where Indian Reserve land is involved; approval by the Agricultural Land Commission for land in the Agricultural Land Reserve; and available project funding. The identification of trails and roadside corridors on this map does not commit the City of Salmon Arm to fund any or all of the proposed greenway projects.

Map 1: Role of Greenways



- Legend
-  Regional Connector
  -  Community Connector
  -  Neighbourhood Connector
  -  Parks, Open Space & Schools
  -  City Boundary
  -  Indian Reserves

Key Map

